

Newspaper records
(basically the only records we have)
of early sheepdog trialing in Western Australia
(1893-1954)

- **List of newspaper references** *pages 3-5*

- **prior to the forming of the WAWSDA in 1936** *pages 6-21*

records from 1893 of

- *trials run by the Royal Agricultural Show* *pages 6-12*
- *RAS committee decisions regarding trials* *" 13-15*
- *trials at the Royal Horse Parade* *" 16-18*
- *trials run by local agricultural societies* *" 19-21*

- **formation of the WAWSDA in 1936 (with RAS secretaryship)** *pages 22-31*

- *records re formation* *Pages 22-25*
- *founding members* *" 26-31*

- **WAWSDA'S development** *pages 32-67*

- *records of meetings: inc. development of course, rules etc*
- *State elimination trials at country shows (Northam, Wagin, Dalwallinu) with the top scoring dogs from that event competing for the "championship" title at the Royal Show*
- *involvement with trials at local agricultural shows* *Pages 65-67*

- In 1956 State championships go entirely to country venues. Top dogs from these events now invited to work at Royal Show on an exhibition basis.
- In 1966 the clubs begin to form - affiliated with the WAWSDA - and conducting local trials
- WAWSDA becomes independent of RAS management in 1974
- in 1972 WAWSDA becomes an association of clubs (rather than individuals)
 - clubs taking turns to run the State Championship

acknowledgement : Jack Mallett

In researching the history of the WAWSDA all thanks goes to Jack Mallett.

He wrote for the Western Mail under the name 'Martingale' and reported on trials and WAWSDA meetings.

The fact that he took a great interest in the association (involved in meetings and becoming a trial judge), he gives comprehensive descriptions of trials, the various issues faced by this developing association, the personalities involved and a report of WAWSDA meetings.

This is the vehicle which has enabled us to gain knowledge of the beginnings of our association: which would otherwise have been lost to us.

THE WESTERN MAIL April 1, 1937.



Inaugural General Meeting.

Official Organ.

A letter was received from "The Western Mail" stating that they would be prepared to act as official organ of the association. Mr. J. Mallett who represented "The Western Mail" stated that provided the members would furnish him with suitable information from time to time and a sufficient quantity came forward he would be prepared to make a regular feature of the activities of the association in "The Western Mail" under a special heading.

It was decided to thank "The Western Mail" for their assistance and to forward them minutes of meetings. It was also decided to advise the members of the Association to forward as much information as possible to "The Western Mail" for this special column.

Western Mail 1 September 1938,

AT the annual general meeting of the W.A. Working Sheep Dog Association held at Northam on Tuesday, August 23, the president (Mr. B. Carroll) said

Much of the interest in these trials and in the affairs of this association have been due to the support which has, at all times, been accorded us by our official organ, "The Western Mail." In addition to publishing information regarding the association's activities and sheep dogs generally, "The Western Mail" has pre-

sent a cup for the winner of the Open

Western Mail | 14 October 1951
Sheepdog Trials At Claremont

Martingale, who has attended all the Annual Sheepdog Field Trials in the line of duty since the W.A. Working Sheepdog Association was formed, was invited to cover the annual trials for The Western Mail as usual,

1887	Nov-07	Daily News	WA Agricultural Society	promoting idea of sheepdog trial
1893	Oct-19 Oct-30 Nov-01 Nov-04	West Australian West Australian West Australian Daily News	RAS sheepdog trial report of above trial and of the course RAS report RAS show report	"the best dogs in the colony to compete" E.F.Darlot's Meg wins "the sheepdog trial went off well"
1901	Sep-07	West Australian	discussion about a trial at the RAS	can't accommodate at present
1903	Sep-05	Western Mail	Geraldton Ag Soc. arranges for trial	
1904	Oct-06 Oct-29 Nov-12	West Australian Western Mail Western Mail	Northam show: sheepdog trial results RAS 3 dogs worked Bunbury: Wellington Ag & Pastoral Society	1. A.W.Edgar's Kelpie 2. W.McKenzies Grant's Bidy 1. W.McKenzies Grant's Bidy 2. A.W.Edgar's Kelpie 3. A.W.Edgar's Marun "sheep chased the dogs off the ground"
1905	Oct-07 Oct-21	Western Mail West Australian	Northam Show Geraldton show	won by A.W.Edgar
1907	Nov-09	Western Mail	Ring Rewards: sheepdog trial	1. Mr Black's Sandy
1910	Aug-04 Aug-07 Aug-13 Oct-14 Nov-04	West Australian Sunday Times West Australian West Australian West Australian	sheepdog trial at horse parade Horse Parade: Sheepdog trial - 2 dogs worked RAS council meeting Arrangements for reinstatement at show description of show trial	horse parade inaugurated last year 1. A.W.Edgar's Roderick Dhu 2. H.W.Clarkson's Trixie sheepdog trial to be reinstated at show Edgar's Roderick Dhu impressive
1911	Jul-29 Aug-06 Oct-14 Oct-29	Daily News Sunday Times West Australian Sunday Times	Royal Horse Show & Parade Royal Horse Parade trial results Royal Show report re scale of trialing points	Big entry for sheepdog trial winner - AW Edgar's Rhoderick Dhu because of 10 min delay hundreds left to catch their trains
1912	Aug-11	West Australian	Royal Horse Parade: sheepdog trial	Red Cloud second in the Novice
1913	Aug-04	West Australian	report of trial at horse parade	Kep first Red Cloud second
1914	Nov-06	Western Mail	Katanning Show: sheepdog field trial	1. N.Sagger's Ginger
1915	Jun-11 Oct-07	West Australian West Australian	RAS meeting Royal Show sheepdog trial	novice class to be added Maiden event won by H.Will's & Co. Queanie - she was bred by Mr.R Wall and is by Red Cloud
1916	Aug-10 Oct-02 Nov-03	Daily News West Australian West Australian	Royal Horse Parade: sheepdog trial Northam Show Katanning Show: sheepdog trial	1. Mr.Donald Paterson's Kep 2.Wills & Co's Shepherd Red Cloud wins 1. N.Saggers Ginger (97pts) 1. Wills & Co's Red Cloud (96pts)
1917	Aug-09 Oct-05 Oct-12	West Australian Western Mail West Australian	Royal Horse Parade: sheepdog trial Northam Show: Sheepdog trial description of RAS trial	1. H.Wills & Co's Red Cloud 2. H.Wills & Co's Mollie 1. Mr E.Jones' Molly 2. Mr R.Wall's Red Cloud 3.Mrs R.Wall's Sport Kep first Red Cloud third
1918	Jul-19 Jul-19 Aug-23 Oct-08 Oct-11	West Australian Western Mail Western Mail West Australian West Australian	RAS meeting decide to adopt Sydney course description of trial course Sydney Royal Horse Parade: sheepdog trials RAS judges show results	Red Cloud winner of Open. Bridge introduced for first time rail strike prevents eastern states judges Red Cloud wins
1919	Oct-10	West Australian	show results	Wills Co N.Saggers on winners list
1920	Aug-10 Oct-08	Daily News West Australian	Royal Horse Parade : sheepdog trial show results	Wills & Co Robert Wall on winners list
1922	Jul-31 Aug-10	Daily News Western Mail	Royal Horse Parade: sheepdog trial Royal Horse Parade results	a strong entry entries - R.Wills & Co's Stud - trained and worked by E.Jones
1924	Mar-13	Western Mail	Donnybrood Ag. Show :sheepdog trial	1. P.W.Dont
1926	Sep-25 Oct-04	West Australian West Australian	Show entry numbers MtMarshall trial	14 trial entries A.J.Riley wins

1928	Aug-14	Daily News	Narrogin sheepdog trial	
1930	Oct-09	Daily News	Show : sheepdog trial	Open trial 1. R.Waugh 2. A.Currie etc.
1931	Oct-08	West Australian	Show results	RH Wallace praised for breeding good dogs
1932	Apr-12 Apr-14 Apr-28 Oct-07	West Australian Western Mail Chronicle Adelaide West Australian	Account of R.H.Wallace's stud and Millar's Ben Glowing account of Millar's Ben and his purchase Another account of Ben Show results	by James Lilico, NZ same article in Tas paper Wallace's Dulcie Currie's Sky
Material about R.H.Wallace's dogs (Kathy Gooch) and info on Tootra Material re N.and O.Saggers				
1933	Feb-15 Oct-15 Oct-13	 Sunday Times & West Australian	Re sale of Tootra bitch to Victoria (Royal Show: sheepdog trial (plus Claremont photo	Bitch mated to Ben (21 entries Open 1. A.Currie's Sky, by Rowdy from (Battle Maid bred by Mr W.Croser
1935	Sep-30 Oct-12	West Australian West Australian	20 entries including team from Vic Sheepdog trial report Royal Show	re dogs of D.L.Horwood and R.H.Wallace
1936	Jun-19 Jun-30 Aug-13 Aug-23 Aug-28 Sep-23 Oct-08 Oct-08 Dec-08	West Australian West Australian Western Mail Sunday Times West Australian West Australian Western Mail Western Mail West Australian	Show committee deletes trial to Northam RAS meeting association needed Northam sheepdog trial details of Northam trial RAS meeting re forming association meeting at Claremont No sheepdog trial at Royal Show Association formed	held in August per Sep 23 report delete trials from RAS good dogs at Northam: Wallace, Bushell and Carroll 57 entries planned meeting in hands of J Bushell gauging support for association founding members
1937	Jan-20 Apr-01 Apr-08 May-27 Jun-05 Jun-10 Jun-17 Jul-10 Aug-05 Aug-19 Sep-02	West Australian Western Mail Western Mail Western Mail West Australian Western Mail Western Mail Western Mail Western Mail Western Mail Western Mail	G.B.Kearney to Melbourne Other references to G.B.Kearney Western Mail 17 Nov 1932 inaugural general meeting of WAWSDA advice to new trialers by D.S.Horwood Advert re Wallace's dogs WAWSDA meeting - help country shows Report of Association meeting Martingale visits Tootra WAWSDA meeting Official Organ of WAWSDA Northam trial 63 entries in Northam trial results	founding member , chief auctioneer for Dalgety and Co West Australian 21 Feb 1934, 13 Mar 1939 inc. J.Mallet to write articles in Western Mail also discussion re incorporation plan Northam trial - includes first farmers trial re Wallace's dogs Northam trial & limiting numbers D.S.Horwood on points of trialing (R.H.Wallace can't attend as shearing)
1938	Jun-09 Jun-09 Jun-30 Aug-18 Sep-01 Sep-01 Sep-01 Sep-03 Sep-08 Sep-08 Sep-17 Oct-06	Western Mail Western Mail Western Mail Western Mail Western Mail Western Mail Western Mail Western Mail Western Mail West Australian Western Mail	List of judges Arrangements for Northam & State trials Details for Northam trial Northam trial entries photos of people & dogs at Northam trial Northam trial results WAWSDA AGM report pictures of dogs and workers at Northam AGM re incorporation, stud book etc RAS meeting Ballidu Show: sheepdog trial description of RAS championship	Championship (final) to be at Royal Show 71 nominations Riley, Horwood, Bob Wall Not to incorporate at present sheepdogs to be at Royal show after lapse of 3 years Open won by E.Riley's Jean 5 dogs ran. Jean wins
1939	Jul-27 Sep-07 Oct-05 Oct-14 Oct-21 Oct-21	Western Mail Western Mail West Australian Daily News Daily News Daily News	WAWSDA rules Royal Show: sheepdog trial after lapse of some years Jean wins at Royal Show sheepdog trial for Tambellup Kojonup Show: sheepdog trial Katanning Show: re sheepdog trial	Preliminary trial at Northam Championship judged by J.Moses of Kentdale, Vic
1940	Mar-14 Jun-06 Jun-27 Nov-28	Western Mail Western Mail Western Mail Western Mail	WAWSDA AGM report WAWSDA committee meeting at Northam Northam trial cancelled Brunswick Show	consider establishment of register scheme for registration of sheep dogs suspended Winner E.Riley's Jean

1945	Apr-19	Western Mail	revival of trials after the war	
	Aug-30	Western Mail	WAWSDA meeting	no trial for the show
1946	Aug-15	Western Mail	words of advice from A Currie	also re new course
	Aug-15	Western Mail	re trial planned for Northam and RAS	
	Aug-23	West Australian	Northam: trial revived after war years	Open 1. H.C.Child's Kit 2.E.G.Riley's Florrie (Jean's daughter)
	Aug-29	Western Mail	" new course in line with Eastern states	(Spectacular performance by J.C.Bushell's Spider in Yard event (worked by Tom (Lance) Barnett.
1947	Aug-30	West Australian	picture E.Riley at the Wagin trial	54 competitors in 3 sections
	Sep-04	Western Mail	trial at Wagin instead of Northam	results
	Oct-16	Western Mail	Martingale article	reports Dick Wallace went to NSW
1948	Apr-01	Western Mail	Martingale report	rule changes for Northam trial/ new novice class
	Aug-25	West Australian	Beverly Show: sheepdog trial	Open winner E.Jone's Jimmy
	Oct-07	West Australian	RAS Claremont: Championship	Winner A.H.Glover's Rags - still under 12 months
	Nov-04	Western Mail	Martingale article on Jack Bushell	
1949	May-12	Western Mail	Obituary W.C.Ball of Kojonup	
	Aug 24,25	West Australian	Wagin trial	Rags wins
	Oct-06	West Australian	Royal Show trial	Rags wins
	Nov-14	Albany Advertiser	Report on Albany sheepdog trial	
1950	Jun-15	Western Mail	WAWSDA committee meeting	re limiting Novice dogs and considering Beverley for next yr
	Aug-03	Western Mail	re plans for Northam trial	
	Aug-22	West Australian	Beverly show: 39 dogs entered	winner: E.Jone's imported dog Quentin Boss
	Aug-31	Western Mail	Northam trial	Rags wins / various photos
	Oct-04	West Australian	report of Championship so far	Rags Fails
	Oct-04	Daily News	Quentin Boss, in State Championship	spectacular water jump!
	Oct-05	West Australian	State Championship	quentin Boss wins
	Oct-27	West Australian	Manjimup needed obstacles	
1951	Jun-14	Western Mail	elimination trial to be in metropolitan area	to warrant bringing eastern states judge
	Sep-20	Western Mail	entries in for annual trial at Royal showground	Quentin Boss, Rags, J.Bushell's Merah, Tom Barnett & Spider11
	Sep-29	West Australian	elimination trial at Claremont	usually Northam or Wagin
	Sep-30	Sunday Times	Rags and Quentin Boss fail in lead up to Championship	
	Oct-04	Western Mail	Review of championship	WAWSDA meeting / to establish stud register
	Oct-04	West Australian	E.G.Riley first two places in championship	
	Dec-06	Western Mail	WAWSDA AGM Trial in Perth was difficult	Re register for sheepdogs
1952	Jun-19	Western Mail	plan for Wagin trial	
	Sep-04	Western Mail	Wagin trial report	W.E.Fowler wins 2 classes
	Sep-18	Western Mail	WAWSDA AGM	on register, trial times and venues etc
	Oct-06	West Australian	L.Ball's Fernrige Teddy wins championship	J.McIntosh of Victoria judged
	Dec-18	Western Mail	WAWSDA meeting report	Association favours formation of federal body
1953	Apr-16	Western Mail	E.Riley and K.Martin to Canberra	1952 K.J.Martin's Trelawney Jess was first WA rep at Nationals
	May-14	Western Mail	WA dogs unsuccessful at National	
	Jun-04	Western Mail	E.Riley's trip to Canberra	suggests standard course
	Jul-16	Western Mail	Course changes for Wagin	
	Sep-10	Western Mail	Wagin winners to contest championship	
	Sep-17	Western Mail	WAWSDA meeting	re Australian body: proposal from Vic
	Oct-01	Western Mail	Contenders for show: course explanation	
	Oct-08	Western Mail	Royal show pictures of trialers	
	Oct-22	Western Mail	Show trial disappointing	Fernridge Moss only champ: was lost before trial
	Nov-26	Western Mail	Busselton trial	deep south an unlikely venue!
	1954	Jan-14	Western Mail	Sheepdog pup flown east
Jul-08		Western Mail	WAWSDA meeting and course changes	Annual trial to be a Dalwallinu
Aug-12		Western Mail	Elimination trial to be at Dalwallinu	
Aug-26		West Australian	Dalwallinu results	Tie between H.Glover's Rags and H.C.Child's Mintie
Sep-09		Western Mail	WAWSDA AGM	trial plans for Kalamunda
Oct-14		Western Mail	Championship results	C.Childs of Cranbrook wins

prior to the forming of the WAWSDA in 1936

It becomes clear that from the beginning of the 1900's (and indeed the late 1800's) sheepdog trials were run :-

- in Perth each year at the Royal Agricultural Show
- at the Royal Horse Parade (on the showgrounds) from 1909 until ?1922
- and at local Agricultural Shows around the State

It was the era of the expanding sheep industry, huge acreages with few fences: facts which meant that the value of good working sheepdogs was well recognised.

records of trials at the Royal Agricultural Show (to 1936)

1893

THE WEST AUSTRALIAN, MONDAY, OCTOBER 30, 1893.

THE WEST AUSTRALIAN,
THURSDAY, OCTOBER 19, 1893.

The sheep-dog trial in connection with the Royal Agricultural Society's Show will be held on the association ground, Perth, on Saturday, 28th inst., instead of Wednesday, 25th, as previously notified. The admission to the ground will be one shilling. The gates open at two o'clock, and the dogs to commence work at 2.30. A number of the best dogs in the colony are expected to compete in the trial.

THE WEST AUSTRALIAN,
WEDNESDAY, NOVEMBER 1, 1893.

THE ROYAL AGRICULTURAL
SOCIETY OF WESTERN AUSTRALIA.

SHEEP DOG TRIAL.

Judges: Messrs. H. H. Edwards and H. F. Keep. Special prize of £3 3s. presented by the President. E. F. Darlot's "Meg."

The Daily News (Perth, WA :

• Saturday 4 November 1893

ROYAL AGRICULTURAL
SOCIETY.

Following upon the two days' show at Guildford, the annual general meeting of the members of this Society was held yesterday.

The sheep-dog trial before the show days went off well. The

THE ROYAL AGRICULTURAL
SHOW.

THE SHEEP DOG TRIAL.

In connection with the annual show of the Royal Agricultural Society a trial of sheep dogs was held on the Cricket Association Ground on Saturday afternoon. The event was confined to three competitors, viz., the dogs of Messrs. Carmichael, Dromey, and E. Darlot. There was a large attendance, but the competition was an interesting one. Of the three competitors, Mr. Darlot's Tasmanian bred bitch Meg was in far better condition and won easily. The task allotted to the dogs was to drive three sheep from one pen to another across the ground, half an hour being the time limit. The first to essay the task was Mr. Carmichael's dog. This animal evidently lacked work, and had no command over the sheep, which, having got into a trench, the dog could not shift them, and was eventually called off by his owner. The next competitor was Mr. Darlot's bitch, which was evidently in good condition, as she set to work in a business-like way, following her master's directions in a most intelligent manner. Her sheep were safely penned in a quarter of an hour. The only fault that could be found with the bitch was that she worked a trifle wide. The next to appear on the scene was a bitch owned by Mr. Dromey. She was evidently very clever, but not having been worked for some time was very slow, and consequently did not get her sheep penned in time. Messrs. Keep and Edwards, the latter gentleman having recently arrived from Melbourne as veterinary surgeon for the Society, acted as judges and they had no difficulty in awarding Mr. Darlot the prize. The winning animal is not a pure bred Collie, but a cross, these animals being valued in Tasmania as better than the pure bred for practical purposes.

1904

THE WESTERN MAIL, October 29, 1904.
(Oct 29 1904)

THIRD DAY OF THE SHOW.

The Royal Agricultural Society's annual show was continued at Woodbridge in delightful weather on Oct. 20. As a

The sheepdog trial, in particular, proved an all-absorbing attraction, and while Mr. A. W. Edgar worked the three competitors, but little else was thought of.

Following were the results:

Sheep Dog Trial (3 entries).—W. McKenzie Grant's Biddy, 1; A. W. Edgar's Kelpie and Marua, 2 and 3 respectively.

The West Australian Perth, WA
Saturday 14 October 1911

THE ROYAL SHOW. 1911
SHEEP-DOG FIELD TRIAL.

The exhibitions given by sheep dogs on previous days were continued yesterday, and again proved highly interesting. Due to a lapse of ten minutes or so between the commencement of the trials and the preceding event, several hundreds of the crowd left the grounds to catch their trains homeward. By doing so they missed a good deal. The first exhibition was given by H. W. Clarkson's Trixie, who commenced promisingly enough, but at the sheep-race panels—the second obstacle to be overcome—developed a tired feeling and an abnormal thirst. Trixie wasted no end of time slaking her thirst at the hose-holes about the ground. She had not worked her charges through the race when the time-keeper announced that time was up. A. W. Edgar's black dog Roderic Dhu was in excellent form, and did the whole circuit with his three sheep in 12 minutes. This dog is reported to have performed particularly well at Gingin recently.

text: The exhibition given by sheepdogs on previous days were continued yesterday, and again proved highly interesting. Due to a lapse of ten minutes or so between the commencement of the trials and the preceding event, several hundreds of the crowd left the grounds to catch their trains homeward. By doing so they missed a good deal. The first exhibition was given by H.W.Clarkson's Trixie, who commenced promisingly enough, but at the sheep race panels—the second obstacle to be overcome—developed a tired feeling and an abnormal thirst. Trixie wasted no end of time slaking her thirst at the hose-holes about the ground. She had not worked her charges through the race when the time keeper announced that time was up. A.W.Edgar's black dog Roderic Dhu was in excellent form, and did the whole circuit with his three sheep in 12 minutes. This dog is reported to have performed particularly well at Gingin recently.

THE WEST AUSTRALIAN, FRIDAY, NOVEMBER 1, 1907.

THE ROYAL SHOW. 1907

SHEEP DOG TRIALS.

Five sheep dogs were entered in competition, the judge being Mr. E. Darlot. The displays were not of a high standard, and only one of them, Mr. Black's Sandy, succeeded in completing the task set him within the stipulated time.

The West Australian (Perth, WA :
Friday 4 November 1910

1910

SHEEP DOG TRIALS.

One of the most interesting events at the show yesterday, and certainly the most attractive of its kind that has ever been witnessed on the grounds, was the trial of sheep dogs. Three competitors were entered, and gave such an exhibition of animal sagacity, resource, patience, and endurance that roused the spectators to a high pitch of enthusiasm. The task given to the dogs was by no means a light one. Three sheep were allotted to one of them, and these he was required to drive through a gate, then through a race, then into a three-sided yard, and lastly into a paddock. The first to make the attempt was Mr. H. W. Clarkson's "Trixie." At the outset her charges were anything but tractable, and one of them would keep dashing off at a tangent. But patiently Trixie darted hither and thither, lying down when to be standing up would have frightened the timid creatures, and making short sallies to push them ahead at the crucial moment. She accomplished her task with honours to herself and credit to her master. Mr. F. G. Dempster's "MacDuff" was next, with a new lot of sheep. MacDuff adopted persuasive measures, and, having amongst his drove a sheep that had the appearance of being on the sick list, took them quietly and worked wide of them. He, too, earned for himself and Mr. Dempster the plaudits of the onlookers. The last trial was carried out by Mr. A. Edgar's "Roderic Dhu," and was by far the most interesting to watch. With three wild sheep to drive, no other dog could have envied the task which this one had to undertake. They split, and reunited at the other end of the ground; then split again, and had to be brought together once more. For 14 minutes the dog coaxed and wheedled, and drove and turned the fractious trio, eventually gaining the upper hand of them and guiding them after his master with unerring precision. The exhibition was an exceedingly popular one, and the only pity was that it could not have been brought on earlier in the afternoon, when more people would have been present to witness it.

records of trials at the Royal Agricultural Show (to 1936)

1911

THE SUNDAY TIMES, PERTH,
OCTOBER 29, 1911.

How
points
are
awarded

RURAL TOPICS

SHEEP DOG TRIALS

Below is given a scale on which points are awarded in sheep-dog trials. It will be seen from this what an immense advantage it is considered to have the animal under command:—Under command, 25 points; steadiness, 15; general working, 20; negotiating obstacles, 20; style (cast 8, approach 5, command of sheep 7), 20; total, 100. The course consisted of rounding a pole, driving through hurdles 4ft. wide, rounding a second pole, crossing wide bridge, and yarding. Time, 15 minutes.

1915

THE WEST AUSTRALIAN,

OCTOBER 7, 1915.

ROYAL AGRICULTURAL SHOW.

RESULTS OF THE RING EVENTS.
SHEEPDOG TRIALS.

(Judge: Mr. A. C. Gillam.)

The sheepdog trials were continued yesterday, and again good exhibitions were given. The maiden event (for dogs that had not won a prize on the Royal Show grounds) was completed, and Messrs. Henry Wills and Co.'s Queenie, 2yrs., who put up a splendid performance, won on points. She was bred by Mr. R. Wall and is by Red Cloud.

The West Australian (Friday 12 October 1917

1917

THE ROYAL SHOW

SHEEP DOG TRIAL

Judge, Mr. A. W. Edger.

Sheep men and a big section of the general public took the keenest interest in an open sheep dog trial, mainly because

Following is the prize list:—
Open dog or bitch: D. Paterson's Kep. 1; D. Paterson's Shepherd, 2; Hy. Wills and Co.'s Red Cloud, 3.

The West Australian—Tuesday 8 October 1918

1918

THE ROYAL SHOW.

Unfortunately the strike on the trans-Australian railway has prevented the judges from the Eastern States attending. They were to have been Messrs. T. Robson, Crownmst, New South Wales (Clydesdales); H. H. Peck, Melbourne (Leicesters); V. H. Newlyn, Victoria (Romney Marsh sheep), and H. G. Tolmer, South Australia (sheep dog trials).

The judge for the sheep dog trials will be chosen today. Mr. Tolmer was hopeful of being able to travel West on the Wyandra but he was telegraphed on Saturday last that he was unable to come across. Mr. L. H.

Rail strike prevents E.States judges

The West Australian | Friday 11 October 1918

SHEEP-DOG TRIALS.

(Judge: Mr. T. Wells.)

The sheep-dog trials were concluded yesterday, and again some of the dogs put up fine performances. On Wednesday Messrs. Hy. Wills and Co. won the novice event with Desert Gold. The same firm annexed the maidens with Trix (89 points), their dog Chirp (90 points), being second. In the open dog class they again did well, Red Cloud winning, with 100 points, Chirp being second. Red Cloud worked exceptionally well for Mr. R. Wall, and the judge remarked that he was almost faultless, being perhaps a little too eager. Chirp did well, and Dottie (Messrs. Hy. Wills and Co.) gave a faultless exhibition until on the bridge, when a bad sheep beat him.

Maiden: Hy. Wills and Co.'s Trix, 1; Hy. Wills and Co.'s Chirp, 2.

Open, dog or bitch: Hy. Wills and Co.'s Red Cloud, 1; Hy. Wills and Co.'s Chirp, 2.

Red Cloud wins with 100 pts

The West Australian (Perth) Friday 10 October 1919

1919

SHEEP DOG TRIAL

Judge: Mr. Donald Paterson.

The sheep dog trial was held fairly early in the morning, and one of the finest series of exhibitions ever seen on the ground was given by Chirp, Ginger, and Trix. Re-

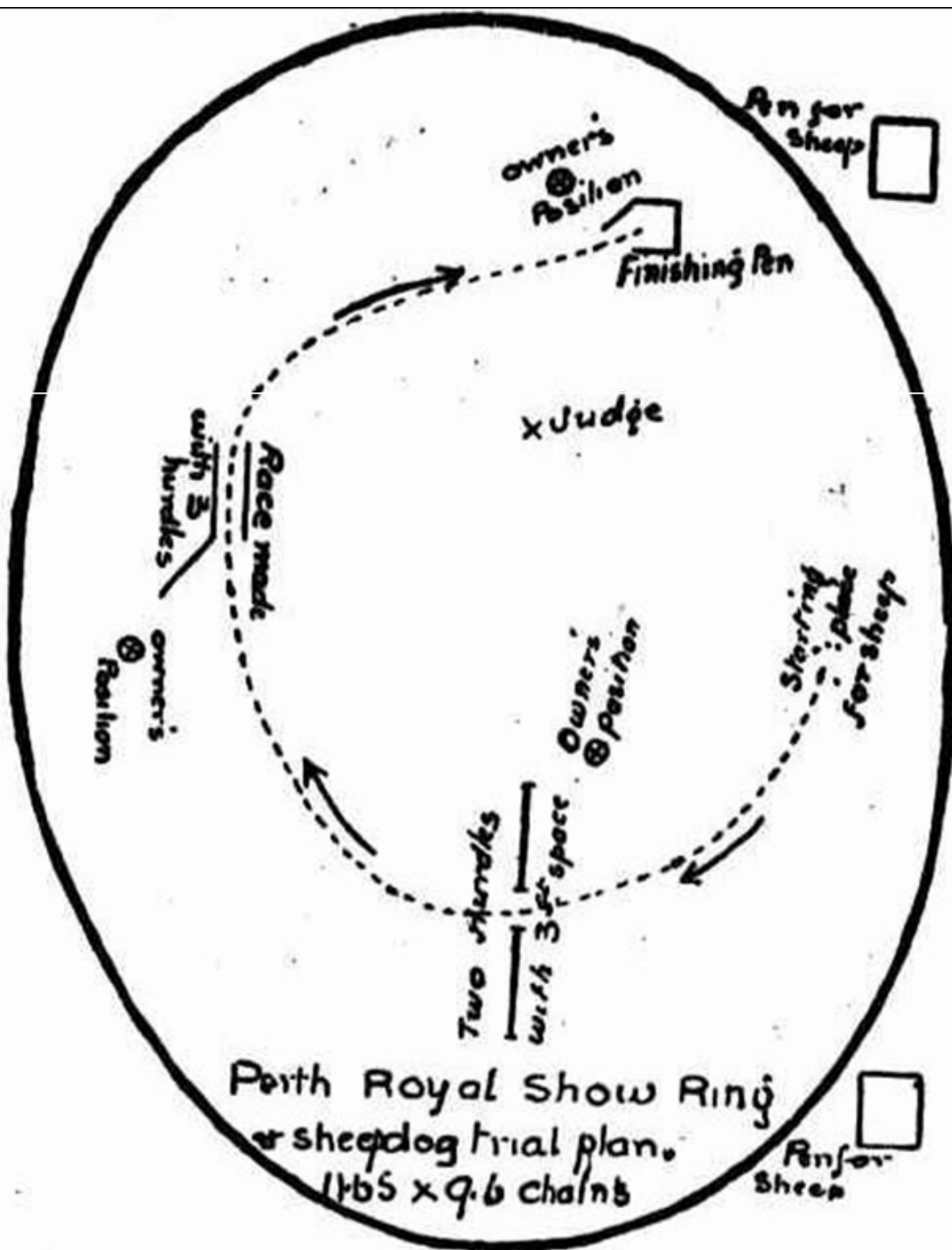
ferfully, and I would like to see in future a class put on for novice workers, that is, for men or boys who have never worked on a show ring. For this class prizes have been offered." Chirp worked faultlessly, and secured 100 points, while Ginger scored 98 points and Trix 98.

Open, dog or bitch: Hy. Wills and Co.'s Chirp, 1yr. 10mths., bred by Jones, sire Sparrow, dam Molly, 1; N. Sagger's Ginger, 2; Hy. Wills and Co.'s Trix, 3.

1918

July 19, 1918.

THE WESTERN MAIL



It will be noted that in the report of the last meeting of the council of the Perth society it has been decided to adopt the Sydney arrangement for the trial course at the next Royal Show at Claremont.

The West Australian Friday 8 October 1920

1920

THE ROYAL SHOW**SHEEP DOG TRIALS.**

During the three days of the exhibitions much interest has been taken in the trials of sheep dogs, which have been carried out before and after the general ring events. Mr. Donald Paterson, once a most successful shower of these remarkably intelligent animals, has acted as judge. This year the young dog has

the third 90 points. In his comment upon the displays the judge said:—The first prize dog, in my opinion, worked without a fault, and was all that could be desired as a worker, giving one of the finest exhibitions ever seen on the grounds. This remarkable kelpie was bred by Jones, and is owned by Henry Wills and Co. The second prize-taker was Desert Gold, the property of Mr. Robert Wall. The following were the awards:—

Novice Dog or Bitch: Henry Wills and Co.'s Biddy, 1.

Special for Dog or Bitch: R. Emmitt's Pilot, 1.

Dog or Bitch (open class): Henry Wills and Co.'s Molly's Fashion, 1; R. Wall's Desert Gold, 2; Henry Wills and Co.'s Trix, 3.

THE WEST AUSTRALIAN, THURSDAY, OCTOBER 8, 1920.

The ROYAL SHOW 1931.

1931

SHEEP DOG TRIALS.

Judge.—Mr. E. Jones.

The sheep dog trials caused a good deal of interest and a few of the dogs engaged did their work exceptionally well.

The maiden (special) class was for dog or bitch, neither the worker nor the dog to have won a prize at the Royal Show or Eastern States competitions. Mr. R. H. Wallace won with Jock, an eleven months old puppy, bred by the exhibitor and ably worked by Master Joffre Wall, who was in the ring for the first time. Young Wall's father has had a fine reputation for years as a worker of dogs, and his son shows great promise. Mr. N. Prete's Ducia was second. The first and second dogs are full brothers, both having been bred by Mr. Wallace, manager of Tootra station, who has spared no expense to secure the right class of dog to breed from. Jock scored again in the class for novice dog or bitch that had never competed for a prize. This youngster was

worked by Mr. Wall, senior. Sandy was second and Ted (a full sister to Jock)

Maiden dog or bitch: R. H. Wallace's Jock, 1; N. Prete's Ducia, 2. Novice dog or bitch: R. H. Wallace's Jock, 1; G. Dunne's Sandy, 2;

1926

THE WEST AUSTRALIAN, SEPTEMBER 25, 1926.

Increased Entries.

General entries for the forthcoming Royal Show exceed by a considerable margin those for last year's event, the respective totals being 5,355 and 4,281. In the stock section there are big increases in sheep and pigs, while the numbers of horses and cattle have decreased slightly. Following are the details:—

Miscellaneous—	1924.	1925.	1926.
Sheep dog field trials	13	7	14

1926
14
entries

1930

The Daily News

PERTH, W.A., THURSDAY, OCTOBER 9, 1930

Sheep Dog Trials

Enough of the sheep-dog trials remained today to give the children, especially the city-bred youngsters, an idea of the amazing sagacity of the dogs. To so many it must have been an eye-opener to see the animals, instead of doing what any pet pup of the city might do, creeping cunningly here and there and handling the often refractory sheep with amazing skill.

And the exhibition was a good one—so good, indeed, that the judge (Mr. J. Cumming) especially stressed the excellence of the work of R. Waugh's dog which won the open trial. "From the point of command over the sheep and general working it was a great exhibition," said the judge, "especially as the sheep were shorn wethers from the North, and naturally were quite ill at ease on a crowd-surrounded ground."

AWARDS

Novice Dog or Bitch: G. Dinnie, 1; A. Currie, 2. Sheep Dog (maiden class): A. Currie, 1. Maiden Dog or Bitch: A. Currie, 1; R. Wall, 2; G. Dinnie, 3. Open Trial (dog or bitch): R. Waugh, 1; A. Currie, 2.

THE WEST AUSTRALIAN, FRIDAY, OCTOBER 7, 1932

THE SUNDAY TIMES, PERTH, WESTERN AUSTRALIA,

OCTOBER 15, 1933

1932

SHEEP DOG TRIALS.

Ducia Wins Concluding Run.

Judge.—Mr. R. B. Williamson.
 The sheep dog trials were concluded yesterday when an event was conducted for maiden dogs or bitches which have never won a first prize at the Royal Show grounds or in Eastern States competitions. The event was won by Mr. R. H. Wallace's Ducia, which is aged one year and 11 months, and which was bred by the exhibitor. The judge remarked on a trial which was done in the morning by Mr. A. Currie's Sky. He said that the trial was almost perfect and that it was unfortunate that, after the sheep had been sent through two runs, one of them broke on to the fence of the enclosure and the dog attempted to bite it, and was disqualified as a result. Result:—

Maiden dog or bitch that has never won a first prize at Royal Show grounds or Eastern States competition: R. H. Wallace's Ducia, 1; E. Jones's Scottie, 2; R. H. Wallace's Nell, 3.

1933

SHEEP DOG TRIALS

An Interesting Competition at the Royal

With a total entry of 21, divided fairly evenly between the juvenile, maiden and open classes, competition was keen, and a number of the dogs clearly displayed the results of careful training.

The winner of the Juvenile Class was Mr. George Dinnie's Don, bred by the exhibitor, by Sandy from Lilly. Second place in an entry of seven went to Mr. A. Currie's Cloud, also bred by the exhibitor.

Entries for the Maiden Class numbered nine, and first place went to Mr. A. Currie's Jeanie, by Sky from Poppy, and bred by the exhibitor. The second award was secured by Mr. D. Smith's Red Rover.

In the Open Class there were five animals of proved worth, and rivalry was keen. The first award went to Mr. A. Currie's Sky, by Rowdy from Battle Maid, bred by Mr. W. Croser. The Juvenile Class winner, in Mr. G. Dinnie's Don, secured second place, while Mr. E. Jones' Scottie, bred by Mr. A. Currie, and a son of the winner, ran into third place.

The West Australian (Perth, WA) | Friday 13 October 1933



Poppy (dam) Sky Laddie (sire) Mollie Jeanie Cloud Glen
 Owned and bred by A. Currie, Bruce Rock WA
 Sire and dam imported from W. Croser S.A.

A mother and father with their five seven months' old pups. By all competing in the sheep-dog trials they established what is believed to be an Australian record.

records of trials at the Royal Agricultural Show (to 1936)

The West Australian (Perth, WA :

1935

Monday 30 September 1935

SHEEP DOG TRIALS.

Owing to the large number of entries in all sections of ring events for the Royal Show, the council of the Royal Agricultural Society has had considerable difficulty in finding time to conduct all the events during the currency of the show. The sheep dog trial entries have been excellent, there being 20 nominations, compared with only one last year. This year many of the entries have come from new exhibitors, while a team of dogs is also coming from Victoria.

In these circumstances, it is anticipated that it will be necessary to conduct eliminating sheep dog trials on the Monday afternoon before the opening of the show from 2 p.m. to 5 p.m. The judge will select the best dogs, and they will be given their final trials during the show. The trials while the show is in progress will take place on the Wednesday, Thursday and Friday mornings from 9 o'clock to about 10.30.

bigger entries

1935

The West Australian Saturday 12 October 1935

THE ROYAL SHOW.

Sheep Dog Trials.

Maiden dog or bitch: D. L. Horwood's Linda, 1; D. L. Horwood's Kentdale Kenrobbie, 2; R. H. Wallace's Fleet 2nd, 3. Open dog or bitch: D. L. Horwood's Kentdale Kenrobbie, 1; R. H. Wallace's Nell, 2; D. L. Horwood's Linda, 3.

1936

The West Australian (Perth, WA : Tuesday 30 June 1936

SHEEP DOG FIELD TRIALS.

The Royal Agricultural Society has decided to delete Sheep Dog Field Trials from the list of Royal Show events and to hold a separate Field Day for them at Northam on Wednesday, August 26, 1936.

The Northam Agricultural Society is co-operating in connection with the arrangements and it is felt that this variation from previous years will be greatly appreciated by exhibitors and also those interested in dog trials generally.

Royal Show deletes sheepdog trials

Number of sheepdogs entered at the Royal Show

1924	1925	1926	1930	1931	1932	1933	1935
13	3	14	27	21	24	21	20

THE WEST AUSTRALIAN. SATURDAY, SEPTEMBER 7, 1901.

1901 The Royal Agricultural Society

A Sheep Dog Trial.

It was mentioned at the meeting that a good many people were anxious that a trial of sheep dogs should be held on the ground during the progress of the show. After a long discussion, it was decided that unless a separate day was set apart for such a trial, it could not be held during the show week. It was thought, however, that such an event, with horse jumping and other interesting competitions, might be arranged for some time in November, but the Society held that it was impracticable to arrange at that meeting to have the event during the currency of this year's annual exhibition.

mooting trials with horse events

1910

trials back at show

THE WEST AUSTRALIAN, SATURDAY, AUGUST 13, 1910.

ROYAL AGRICULTURAL SOCIETY.

MEETING OF THE COUNCIL.

The monthly meeting of the Royal Agricultural Society was held on Tuesday last, Mr. A. Crawford presiding.

Mr. Edgar having written offering a prize of £5 5s. for sheep dog trials if that item were reinstated in the schedule for the Royal Show, it was decided to accept the offer with thanks, and to reinstate the item.

The West Australian (Perth, WA :

Friday 14 October 1910

1910

THE ROYAL SHOW.

HIGHLY SATISFACTORY PROSPECT.

Lowrie. At the recent horse parade a most successful sheep dog field trial was held, and this prompted Mr. Edgar to offer a special prize of £5 5s. for a similar event at the Royal Show. The council have decided that instead of holding this competition in the morning it shall be held after the events in the evening. The dogs will be much cooler, and those interested will gladly stay a few minutes to watch the contest, for which a fair entry is anticipated.

The West Australian

Friday 11 June 1915

1915

ROYAL AGRICULTURAL SOCIETY.

MEETING OF COUNCIL.

A meeting of the council of the Royal Agricultural Society of Western Australia was held on Wednesday, when there was a good attendance. The business dealt with was mainly in connection with the forthcoming Royal show, which is to be held from October 5 to October 9.

here. In connection with the sheep dog field trials, a class has been added for novices (dogs which have never won a prize on the Royal show grounds).

class added for novice dogs

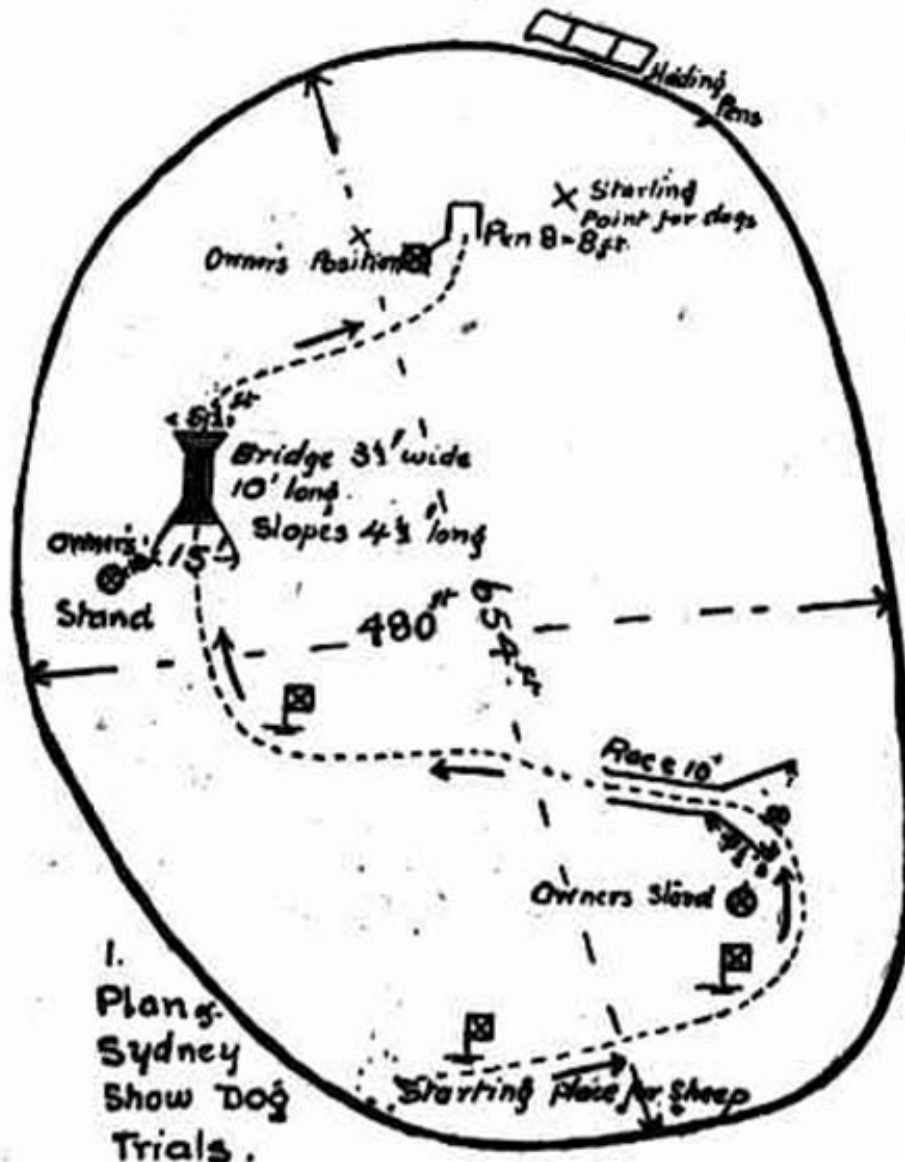
Western Mail (Perth, WA : Friday 19 July 1918 |

1918

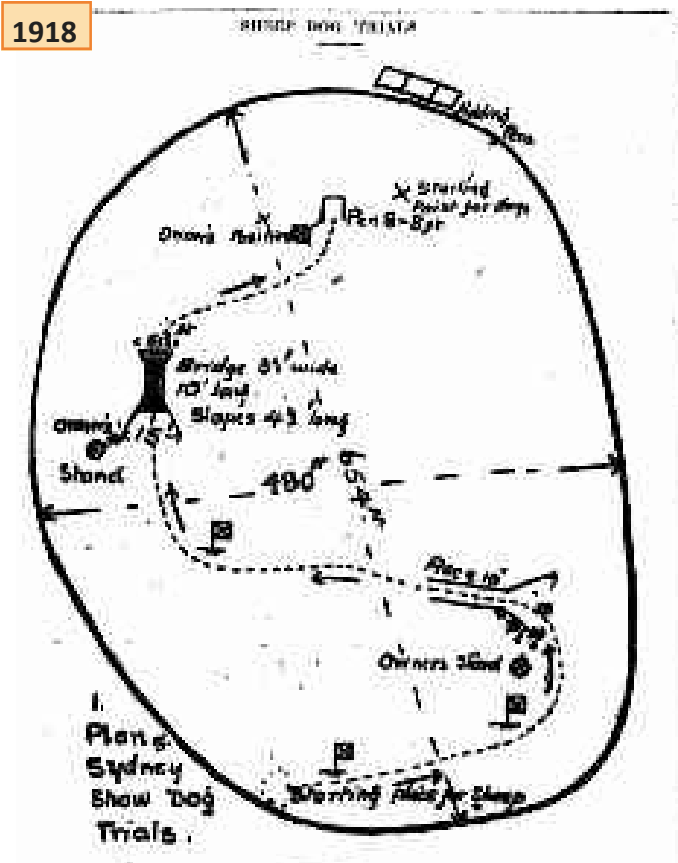
ROYAL AGRICULTURAL SOCIETY.**MONTHLY MEETING.**

The monthly meeting of the Royal Agricultural Society was held last week. Mr. S. F. Moore, chairman of the council, presided.

It was decided in connection with the sheep dog trials that the obstacles and conditions obtaining in Sydney should be adopted here; that an endeavour should be made to secure a judge from the Eastern States for the Royal Show, and that Mr. F. R. Walsh should be asked to judge the sheep dogs in the parade.

SHEEP DOG TRIALS

Sydney course to be adopted for Show

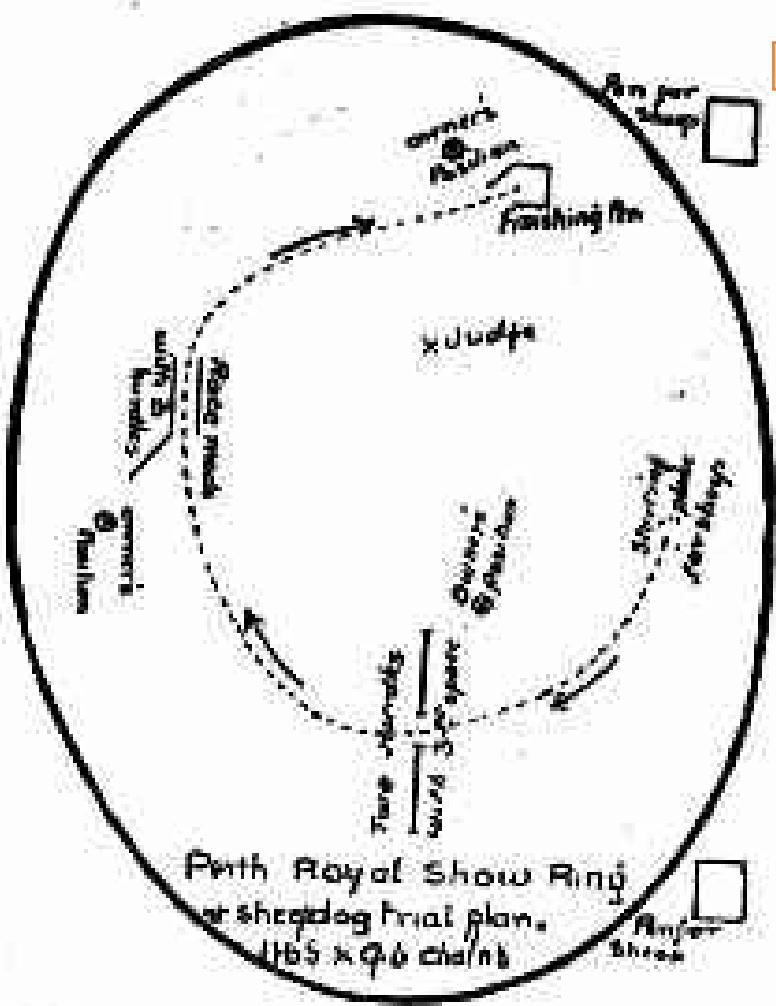


On July 5 a correspondent asked for some hints on training a sheep dog, and for a plan of the course used in trials. Mr. Ashton, secretary of the Royal Agricultural Society has kindly furnished me with a plan of the course used in the trials at the Sydney Royal Show, and also of that used by the Perth Society on the Claremont grounds. These diagrams fully explain themselves and as the length and breadth of the show ground arenas are given, an idea of the extent of the courses can be fairly well gathered. In addition, he has supplied

It will be noted that in the report of the last meeting of the council of the Perth society it has been decided to adopt the Sydney arrangement for the trial course at the next Royal Show at Claremont.

RAS to eliminate sheep dog trial

The West Australian (Friday 19 June 1936



1936

SHEEP DOG TRIALS.

Country Field Day.

The council of the Royal Agricultural Society decided at its monthly meeting on Wednesday to eliminate the sheep dog trials at the Royal Show this year, and to substitute a field day at Northam in August.

Mr. R. Carroll said that for the past few years the sheep dog trials at the show had been a worry to the staff and a source of annoyance to competitors. It was possible to hold them only late in the evening or early in the morning, which was inconvenient both to stewards and competitors. We thought that a separate field day held in some centre accessible to most country districts would attract greater interest.

Mr. A. L. B. Lefroy said it would be a pity to eliminate the trials from the Royal Show schedule until all possibilities of their being carried out successfully had been exhausted. Sheep dog trials were a feature of the Sydney Sheep Show. However, it would do no harm to give the new scheme a trial.

On the motion of Mr. Carroll it was decided to adopt the suggestion if the collaboration of the Northam Agricultural Society could be secured. The prize money was increased to £30, and the president (Mr. W. G. Burges) and Messrs. Carroll and Lefroy were appointed to join with two representatives of the Northam society in forming a committee to organise the trials.

Run in by the RAS from 1909. It was able to cater for more entries in a sheep dog trial than the Royal Show. Our last record of a Horse Parade is 1922

1910
THE WEST AUSTRALIAN.

AUGUST 4, 1910.

ROYAL HORSE PARADE.

THE PUBLIC DAY.

SATISFACTORY PATRONAGE AND GOOD SPORT.

The Horse Show and Parade inaugurated by the Royal Agricultural Society last year has not yet, to use a colloquial expression, "arrived." It was initiated by the Society with a distinct national and utilitarian purpose, and the attainment of the desired end was not to be expected in two years. Having regard to that fact, the show which terminated yesterday was an undoubted success. In the opinion of competent judges

1910
THE SUNDAY TIMES, PERTH.

AUGUST 7, 1910.

THE ROYAL HORSE PARADE

CONTINUED

SHEEP-DOG TRIAL.

On Wednesday morning there was a sheep-dog trial, and though there were but two entries it produced a most interesting event. The winner was A. W. Edgar's Roderick Dhu, who went through his trial in great style, putting the sheep through the races and into their pens in 17min., being 3min. inside the time limit (20min.) H. W. Clarkson's Tricksey also gave an excellent showing, and gained the second prize. Many good judges consider that it was one of the best dog trials yet seen in W.A. Both animals showed wonderful sagacity.

1911
THE DAILY NEWS, SATURDAY, JULY 29, 1911.

THE THIRD HORSE PARADE

The annual horse show and parade directed by the Royal Agricultural

is. There is a big entry for the sheep-dog field trial, and competitors have been asked to have their dogs on the ground not later than noon on Tuesday, as it will be necessary to run off some of the competitions that afternoon. The grounds are in beautiful

numbers building up for sheepdog trial

1912
THE SUNDAY TIMES, PERTH, AUGUST 6, 1911.

Royal Horse Parade.

SHEEP-DOG TRIAL.

A. W. Edgar's Roderick Dhu, 90 points, 1; H. W. Clarkson's Trixie, 86 points, 2; A. W. Edgar's Lass o' Ballochullosh, 76 points, 3.

1912
THE SUNDAY TIMES,

Royal Horse Parade

AUGUST 11, 1912.

SHEEP DOG TRIALS.

Novice Dog or Bitch. First prize, £2 2s.; second prize, £1 1s.—D. Paterson's Sheba, 1; H. Wills and Co.'s Red Cloud, 2; A. W. Edgar's Roderick Ruah, 3.

Open. Dog or Bitch. First prize, £3 2s.; second, £1 1s.—D. Paterson's Kep, 1; F. G. Dempster's McDuff, 2; F. C. B. Lefroy's Tip, 3.

THE WEST AUSTRALIAN,

1913

MONDAY, AUGUST 4, 1913.

SHEEP DOG FIELD TRIALS.

The field trials for sheep dogs—Mr. L. H. Darlot being judge—aroused a lot of interest. Last year sheep were too quiet, and apparently were used to the locality, but this year left nothing to be desired, as they appeared to be exceptionally active and alert. The conditions were to drive three sheep through a gate and a race, and then yard them in a pen. In the open class, dog or bitch, Mr. Donald Paterson's Kep put up a fine performance, performing the task in 8½ minutes. His sheep were working well. Red Cloud, belonging to Wills and Co., was second, and did his work in 11½ minutes. He did an excellent round, but his sheep were very stubborn at the yard. In the novice class Mr. A. W. Edgar with Logie o' Buchan had to throw it up through making a wrong course. In the open class Mr. W. C. Ball, with Red Wull, retired after making a cross course. A very promising pup named Nigger was entered by Wills and Co., but his worker retired him at 11½ minutes. The pup shaped remarkably well, but he had to tackle three exceptionally fast and strong sheep. His pace was not equal to his heart. No award was made in the novice class.

Following are the results:—Class 1. Open dog or bitch. First prize £3 3s., second £1 1s.—Mr. Donald Paterson's Kep, 3yrs. 9mos., bred by owner, by Nick—Strathalbyn Lass, by Kelpie, 8½min., 1s.; Messrs. Henry Wills and Co.'s Red Cloud, by Blue Cloud—Trixie, 11½min., 2.

The Daily News (Perth, WA : Thursday 10 August 1916

1916

ROYAL HORSE PARADE.

At the Royal horse parade to-day first prize in the sheep-dog trials went to Mr. Donald Paterson's Kep, and second to Wills and Co.'s Shepherd.

The West Australian, Thursday 9 August 1917,

1917

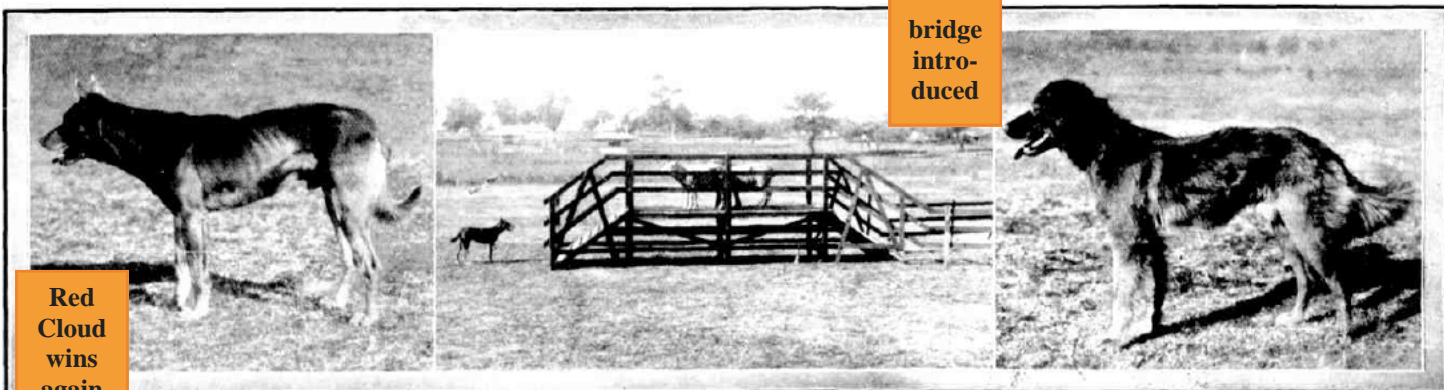
Royal Horse Parade.—Under most inclement weather conditions, the Royal Horse Parade was continued yesterday. Fortunately all the ring events were finished the previous day, and all that required attention was a sheep dog trial. This was a most interesting item, Messrs. Hy. Wills and Co. supplying first and second dogs. The awards were:—Open, dog or bitch: Hy. Wills and Co.'s Red Cloud, 1; Hy. Wills and Co.'s Mollie, 2; D. Paterson's Shepherd, 3. The judge, Mr. L. H. Darlot, was unable to separate Red Cloud and Mollie in the opening trial, and decided upon a work off, which was won by Red Cloud.

1918

"Western Mail," August 23, 1918.

Prize Winners at the Horse Parade.

The Sheep Dog Trials on the Royal Show Ground.



Red Cloud wins again

bridge introduced

WINNER OF THE OPEN TRIAL

THIS YEAR A NEW SYSTEM WAS ADOPTED, THE DOGS, AMONG OTHER THINGS, HAVING TO PUT THE SHEEP OVER A BRIDGE

'SAILOR,' WHO WAS SUCCESSFUL IN THE MAIDEN COMPETITION

The sheep dog trials held in the Show Ground last week were decidedly interesting. Messrs. Henry Wills and Co. won both events. Sailer, who is only 12 months old, captured the event for maidens in good style. He did the trip in 13 minutes, and secured 63 points. His two opponents were called off. The open event was very keenly contested by Red Cloud and Sailor, and the older dog won in 12 minutes, while Sailor took 14 minutes 58 seconds. They both secured 100 points. A third competitor was called off. Messrs. A. Edgar and J. L. McGinnis were the judges and they were greatly pleased with the exhibitions.

"RED CLOUD" WINNER OF THE OPEN TRIAL

THIS YEAR A NEW SYSTEM WAS ADOPTED, THE DOGS, AMONG OTHER THINGS, HAVING TO PUT THE SHEEP OVER A BRIDGE

'SAILOR,' WHO WAS SUCCESSFUL IN THE MAIDEN COMPETITION

above text: The sheep dog trials held on the Show ground last week were decidedly interesting. Messrs. Henry Wills and Co. won both events. Sailer, who is only 12 months old, captured the event for maidens in good style. He did the trip in 13 minutes, and secured 63 points. His two opponents were called off. The open event was very keenly contested by Red Cloud and Sailor, and the older dog won in 12 minutes, while Sailor took 14 minutes 58 seconds. They both secured 100 points. A third competitor was called off. Messrs. A. Edgar and J. L. McGinnis were the judges and they were greatly pleased with the exhibitions.

1920

The Daily News (Perth, WA)

Tuesday 10 August 1920

ROYAL HORSE PARADE

To-morrow morning, at 9.30 sharp, the sheep-dog field trials, always an interesting feature of the society's demonstrations, will be proceeded with.

1922

THE DAILY NEWS, MONDAY, JULY 31 1922.

ROYAL HORSE PARADE**WEDNESDAY'S BIG EVENT**

The annual Horse Parade, in connection with the Royal Agricultural Society, will take place at the Royal Showgrounds, Claremont, on Wednesday. The judging the sheep-dog trials at 1.45. There is a strong entry for these events, the majority of the cleverest dogs in the State having been nominated.

Western Mail y 10 August 1922

THE SHEEP DOG TRIALS.

Subsequent to the sheep dog trials Mr. Donald Paterson, who was judging the events, stated that he did not consider a better exhibition could have been given. They were perfectly under control, and also in command of their sheep. Both of the winning dogs are owned by Henry Wills and Co., and Mr. Paterson considers that great credit is due to Mr. E. Jones for the manner in which he always brings his dogs into the show ring. The winning dog in the open class, Mollie's Passion, gained the possible, and Trixie was only a point behind. In the maiden class Red Fancy displayed such wonderful ability and judgment that it may safely be predicted that she will be a future champion. All of the prize-winners were bred at the one stud by Messrs. Wills and Co., and were trained by Mr. Jones. Mr. Paterson regretted that although the entry was good, there was not more competition from other breeders.

records of trials at local Agricultural Shows

Before the formation of the WAWSDA, trials are reported at country agricultural shows. There is no way we can have a complete list — just newspaper reports we have come across. Likewise with the dates: those listed are just the first report we have read from that particular area.

Geraldton	1903
Northam	1904
Bunbury	1904
Donnybrook	1908
Gingin	1911
Moora	1911
Williams	1911
MtBarker	1912
Katanning	1912
Jennapullen	1918
Mt.Marshall	1926
Narrogin	1930
Bruce Rock	1931
Coorow	1932
Kellerberrin	1936

trials after 1936—(it is possible trials were held in these towns prior to these dates. These are just reports we have read).

Ballidu	1938
Kojonup	1939
Tambellup	1939
Wagin	1947
Beverly	1948
Albany	1949
Manjimup	1951
Busselton	1953
Dalwallinu	1954

1903

THE WESTERN MAIL. September 8, 1903.

RURAL NOTES.

The Geraldton Agricultural Society seem determined to keep up their reputation as being the most up-to-date agricultural society in the State, the Royal not excepted. In their arrangements for this year, they have a working sheep-dog trial, and are the first society to introduce this most popular exhibition into this State.

1904

THE WEST AUSTRALIAN
OCTOBER 6, 1904.

NORTHAM SHOW.

SECOND DAY.

Northam, October 5.

The Northam Show was continued to-day in glorious spring weather. There
Sheep-dog trial: A. W. Edgar's Kelpie, 1;
W. McKenzie Grant's Biddy, 2.

1904

THE WESTERN MAIL.

November 12, 1904.

SECOND DAY.

Bunbury, November 4.

The annual show of the Wellington Agricultural and Pastoral Society was continued to-day, under highly satisfactory conditions of weather and attend-

A sheepdog trial was held, but the sheep chased the dogs off the ground.

1905

WESTERN MAIL. October 7, 1905

NORTHAM AGRICULTURAL SOCIETY.

ANNUAL SHOW.

To-morrow will be the spectacular day, when, given fine weather, a number of

to say nothing of the always popular sheepdogs. The follow-

1905

THE WESTERN MAIL, October 21, 1905.

GERALDTON AGRICULTURAL SOCIETY.**ANNUAL SHOW.**

Geraldton, October 11.

The ninth annual show of the Geraldton Agricultural Society was opened at

Sheepdog trial: A. W. Edgar, 1.

Western Mail (Perth, WA) Friday 6 November 1914

1914

KATANNING AGRICULTURAL SOCIETY.**THE ANNUAL SHOW.**

Katanning, Oct. 29.

The Katanning Agricultural Show was continued to-day, when, in spite of several light showers, the attendance was nearly

son, 1; P. Crossley, 2. **Sheepdog field trials: Mr. N. Sagger's Ginger, 1; Mrs. C. A. Ball's Red Wull, 2. Horse (sulky), 14.2.**

THE WEST AUSTRALIAN, NOVEMBER 3, 1916.

(Nov 3 1916)

KATANNING AGRICULTURAL SOCIETY.**THE ANNUAL SHOW.**

1916

Wills and Co., 2. Sheepdog field trials: N. Sagger's Ginger, 1 (87 points); Henry Wills and Co.'s Red Cloud, 2 (86 points).**Sheepdog field trial:****N. Sagger's Ginger 1, (?87 points) Henry Wills and Co's Red Cloud 2 (?86 points)**

THE WEST AUSTRALIAN.

1916

MONDAY, OCTOBER 2, 1916.

THE NORTHAM SHOW.**SECOND DAY'S PROCEEDINGS.****RING EVENTS.**

In the sheep dog trial there were five competitors, and the event was a most interesting one. Messrs. Henry Wills and Co.'s dog Red Cloud was adjudged the winner with 86 points to his credit, doing his work in 10½ minutes. Mr. F. R. Walsh's Jack gained the same number of points, but took thirteen minutes.

RING EVENTS. In the sheep dog trial there were five competitors, and the event was a most interesting one. Messrs. Henry Wills and Co.'s dog Red Cloud was adjudged the winner with 86 points to his credit, doing his work in 10.5 minutes. Mr. F. R. Walsh's Jack gained the same number of points, but took thirteen minutes

1917

THE WESTERN MAIL.

October 5, 1917.

THE NORTHAM SHOW.**SECOND DAY.****Sheepdog Trial.—Mr. E. Jones's Molly, 1 (time, 9½ min.); Mr. R. Wall's Red Cloud, 2 (time, 11½ min.); Mrs. R. Wall's Sport, 3 (time, 17 min.).**

THE DAILY NEWS, TUESDAY, AUGUST 14, 1928.

1928

VISITING STUDENTS**Western Australian Tour**

When passing through Narrogin last week on their tour of the Dominions the party of British ex-University students had an opportunity of visiting the School of Agriculture.

for training young farmers. They incidentally witnessed rather a good sheepdog trial.

Western Mail (Perth, WA)

1924

Thursday 13 March 1924, p

AGRICULTURAL SHOWS.
Donnybrook.**Sheepdog trials: P. W. Dent,**

The West Australian | Friday 28 August 1936

1936 **Field Trials at Northam.**

NORTHAM, Aug. 26.—The annual sheep dog trials were conducted by the Royal Agricultural Society in conjunction with the Northam Agricultural Society on the Northam Society's grounds yesterday and today. There were 57 entries in the four classes. The secretary of the Royal Agricultural Society (Mr. C. W. May) was present and collaborated with the secretaries (Messrs. G. C. Curlewis and T. M. Phillips) and stewards of the Northam Society in the control of the events. Mr. Justin Walsh acted as time keeper and announcer. The arrangements for the trials were most satisfactory and there was a large attendance of the general public to witness the contests in the major classes, which were held today.

The judge (Mr. R. Wall) in commenting on the trials, said that although there were one or two outstanding performances amongst the dogs, the general display had been a little disappointing. "I don't think the exhibitors have really taken as much interest in the trials as they might have," he said. "The dogs require more training and now that they realise that these trials will be held annually, owners seem disposed to take the work of preparation more seriously. Amongst several good dogs, there were some in the young classes that will probably be seen to better advantage next year. Outstanding exhibitions were given by dogs entered by Mr. D. S. Horwood, of Midland Junction, and Mr. Ben Ball, of Wagin, in the open class and by the Tootra dogs worked by Mr. E. Jones in the young classes."

The winner of the open class was Mr. D. S. Horwood's Linda, and referring to this dog, which secured 90 out of 100 points, the judge said she had given a wonderful exhibition and had been unfortunate in not being able to complete the course through lack of time. The dogs were required to bring the sheep to the men who were working them and then in 15 minutes put them through three obstacles and yard them. Mr. E. Riley's Jean, the winner of the Novice class, completed the course. The dog, Linda, and Mr. A. Currie's Sky both negotiated the obstacles and were getting the sheep near the entrance to the yard when their time expired.

Mr. Wall expressed the opinion that when dogs were working so well time should not be adhered to rigidly but that an extension should be left to the discretion of the judge.

Results:—Puppy dog or bitch: R. H. Wallace's Gem, worked by E. Jones, 1; R. H. Wallace's Mist, worked by E. Jones, 2. Novice dog or bitch: E. G. Riley's Jean, 1; D. S. Horwood's Blue Jaff, 2; B. Ball's Border, 3. Maiden dog or bitch: R. H. Wallace's Gem (74 points) 1; G. Dinnie's Windy (62 points) 2; R. H. Wallace's Border Nell (56 points) 3. Open dog or bitch: D. S. Horwood's Linda (90 points) 1; A. Currie's Sky (79 points) 2; B. Ball's Gyp (77 points) 3.

1926

THE WEST AUSTRALIAN, MONDAY, OCTOBER 4, 1926.

Mt. Marshall.

The Mt. Marshall District Agricultural Society held its second annual show on September 18, the attendance being over 1,100. Following were the principal awards:—

Sheep dog trial: J. Riley, 1 (85 points).

these are the trialers who formed the association

THE WESTERN MAIL. August 13, 1936.
STOCK AND STATION.

Topics of the Week.

this State. When we realise the immense value of sheep dogs to all flock-owners it is rather astounding that greater interest is not shown in sheep dog trials in this State. In all the Eastern

What is needed of course is a live sheep dog breeders' society to take the initiative. The Royal Agricultural Society this year is working in conjunction with the Northam Agricultural Society to conduct a day of field trials at Northam on August 26, and all who like to see really good dogs at work and in competition can be recommended to attend. Doubtless prominent breeders of Border Collies and Kelpies like Mr. R. H. Wallace, of Tootra, Walebing; J. C. Bushell, of Trelawney, Watheroo; R. Carroll and Sons, of Bungally, York, and many more will be keen contestants when the trials eventuate.

Western Mail | Thursday 8 October 1936

SHEEP DOG SOCIETY FORMED.

A meeting of a number of sheep dog enthusiasts was held at the Royal Show grounds, Claremont, on Tuesday. Those present were Messrs. R. Carroll (York), J. C. Bushell (Watheroo), D. H. Horwood (Midland Junction), R. Wallace (Moorra), R. Wall (Subiaco) and T. M. Phillips (Northam). Mr. Carroll was appointed acting chairman and Messrs. G. C. Curlew and T. M. Phillips, joint secretaries of the Northam Agricultural Society, were appointed acting joint secretaries and treasurers.

The chairman said that the object of the meeting was to consider the forming of a working sheep dog association in Western Australia. It was resolved to forward a suitable circular to anyone concerned stating that a working sheep dog association was being formed and asking for their support on a proposed nomination fee of 10/6 per member; also that a general meeting would be arranged at Northam at an early date.

It was reported that the following would be prepared to support the project:— Messrs B. Ball, (Wagin), J. Riley (Gutha), D. Dennie (Wubin), G. Bagshaw (Kellerberrin), J. Currie (Bruce Rock), Owen Siggers (Tambellup), W. E. Robinson (Brookton), Jas. Cameron (Watheroo), J. Goodchild (Midland Junction), Miss D. Wells (Mingenew) and E. T. Loton (Upper Swan).

Donations of £5/5/ were promised by Mr. D. H. Horwood and Mr. R. Wallace.

THE WEST AUSTRALIAN, SEPTEMBER 23, 1936. (1936)

Proposed Sheep Dog Association.

The secretary of the Royal Agricultural Society (Mr. C. W. May) advises that during Royal Show week, an effort will be made to form an association of sheep dog owners in this State. Realising the value of sheep dogs to all flock owners and the popularity they enjoy here, it is really surprising that this State should be so far behind the other States and New Zealand in practical demonstration of the use and value of sheep dogs to the public. In the other States and New Zealand, sheep dog trials during the year are fixtures of outstanding interest to farmers. In this State, they receive little support from breeders and owners and still less from the public. The Royal Agricultural Society did make an effort this year to achieve something in the direction necessary, by holding a two-day trial at Northam last month. An association is badly needed to give the lead and to arrange the organisation necessary for such fixtures. The arrangements for the Royal Show week meeting, which incidentally will be held in the meeting tent near the cattle pens on the grounds at 4.30 p.m. on Tuesday, October 6, are in the hands of one of our keenest enthusiasts, Mr. J. C. Bushell, of Trelawney, Watheroo, and it is to be hoped that there will be a good attendance of interested owners.

gauging support for a
working sheepdog as-
sociation

THE WEST AUSTRALIAN, DECEMBER 8, 1936

WORKING SHEEP DOGS

Association Formed.

NORTHAM, Dec. 4.—At a meeting held here on Saturday afternoon, it was decided to hold the West Australian Working Sheep Dog Association and the following officers were appointed for the year to commence on January 1:—Patron, Mr. V. L. Bode; president, Mr. R. Carroll; vice-presidents, Messrs. W. G. Burges and Mr. A. Piesse; secretary, Mr. C. W. May; treasurer, Mr. L. Lefroy; general committee, Messrs. J. C. Bushell, D. S. Horwood, R. H. Wallace, B. Ball, E. T. Loton, E. Jones, J. E. Gray, R. Wall, A. Currie, O. Siggers, E. G. Riley and G. B. Kearney; sub-committee to frame the rules for the association; Messrs. Wallace, Horwood, Wall, Bushell and Kearney.

It was stated that the Royal Agricultural Society had been approached with a view to taking over the secretaryship of the association and a reply had been received intimating that it would be prepared to do so. It was felt that as the society controlled the secretaryship of all State-wide societies of a similar nature, it would be more beneficial to have the control of the association centrally situated at Perth.

The commencing of the financial year on January 1, to end on December 31, and the fixing of the annual subscription to the association at 10/6 per annum, was decided on.

It was also decided that a letter of appreciation be forwarded to the joint secretaries of the Northam Agricultural Society (Messrs. G. C. Curlewis and T. M. Phillips), who had acted as secretaries in the establishment of the association, and to the committee of the Northam Agricultural Society for its work in this direction and also in connection with the recent sheep dog trial field day held at Northam. It was further decided to write to Mr. R. Wall thanking him for having acted as judge at the trials. A vote of thanks was accorded to Mr Bode.

Association
formed

It was reported that numerous letters had been received in reply to the circular sent out regarding the meeting that day, commending the steps being taken to form the association, and promising support.

The association has been formed in order to protect the interests of breeders of sheep dogs and to provide some central authority from where the names of registered breeders can be obtained by prospective buyers. Country districts are now devoting a considerable amount of attention to the holding of sheep dog trials, and it will be the work of the association to advise such districts as to the manner of conducting and judging the trials and to generally control them in the same manner as in the other States. The sheep dog associations of the Eastern States receive a considerable amount of support. Any persons desirous of associating themselves with the association are advised to communicate with the secretary, care of the Royal Agricultural Society, 18 William-street, Perth.

April 1, 1937. THE WESTERN MAIL.



The Working Sheep Dog

Official Organ of the
W.A. Working Sheep Dog Association.

For several years past, the question of the formation of a representative body is one that has been mooted whenever a few sheepdog enthusiasts are gathered together. The outstanding success of the Sheepdog Trials held at Northam in August of last year, when the encouraging total of 60 entries was received, led to further activity in that direction and following upon the 1936 Royal Show, a meeting was held at which it was decided to form an association under the aegis of the Royal Agricultural Society of Western Australia.

The West Australian Working Sheepdog Association was formed, and a constitution has been drafted and approved. Membership is open to all those who are interested in the working sheepdog, and the annual subscription is 10/6. Particulars may be obtained from the secretary, W.A. Bank Chambers, William-street, Perth.

Inaugural General Meeting.

An inaugural general meeting was held in the committee-room of the Royal Agricultural Society on March 16. Those present included Mr. R. Carroll—in the Chair—Messrs. G. A. W. Plesse, R. H. Wallace, J. C. Bushell, G. E. Bagshaw, Ben Ball, T. Barnett, J. E. Gray and Mr. J. Mallett ("The Western Mail"). Apology was received from Mr. A. L. B. Letrov.

The report of the Rules Sub Committee Meeting held February 10, 1937, was adopted subject to the following amendments to the draft rules, on the motion of Mr. J. E. Gray, seconded by Mr. G. A. W. Plesse. Clause 9: Amend to provide for 10 days' notice in lieu of 7; Clause 10: Amend to provide for 10 days' notice in lieu of 7. Discussion took place regarding Clause 14 of the Rules when it was pointed out that the individual members of the association may make themselves liable for a civil action if the case was brought before the Committee under this Rule owing to the fact that the association was not an incorporated body. It was then resolved on the motion of Mr. J. E. Gray, seconded by Mr. J. C. Bushell:—

"That the secretary be asked to make inquiries as to the cost and procedure of having the association incorporated and report to the next committee meeting.

The question of collaborating with other kindred institutions was discussed, when it was resolved on the motion of Mr. G. A. W. Plesse, seconded by Mr. R. H. Wallace:—

That the secretary be asked to keep in touch with Eastern States associa-

tions with a view to securing information for the mutual benefit of all associations.

Official Organ.

A letter was received from "The Western Mail" stating that they would be prepared to act as official organ of the association. Mr. J. Mallett who represented "The Western Mail" stated that provided the members would furnish him with suitable information from time to time and a sufficient quantity came forward he would be prepared to make a regular feature of the activities of the association in "The Western Mail" under a special heading.

It was decided to thank "The Western Mail" for their assistance and to forward them minutes of meetings. It was also decided to advise the members of the Association to forward as much information as possible to "The Western Mail" for this special column.

Rules Sub-committee.

It was resolved on the motion of Mr. G. A. W. Plesse, seconded by Mr. J. E. Gray:—

That it be recorded on the Minutes the appreciation of the Association to the sub-committee for framing the rules.

1937 Trials.

It was resolved on the motion of Mr. R. H. Wallace, seconded by Mr. G. A. W. Plesse:—

That the Northam Agricultural Society be asked to collaborate with the Association in holding trials at Northam in approximately the middle of August, the finalisation to be left in the hands of the committee.

Prize Money.

It was resolved on the motion of Mr. J. E. Gray, seconded by Mr. J. C. Bushell:—

That the Royal Agricultural Society be asked to make available the same amount of prize money for 1937 trials as it made available in 1936.

It was decided to hold a committee meeting to discuss the trials for this year and it was resolved on the motion of Mr. G. A. W. Plesse, seconded by Mr. R. H. Wallace:—

That the fixing of the time of the committee meeting be left in the hands of the president and secretary.

The question of the trial rules for the 1937 trials and incorporation in the general rules was then discussed when it was decided to leave this in the hands of the committee. The rules operating for the 1936 trials were gone through with a view to securing suggestions for the guidance of the committee and the following points were noted:—

Consideration be given to providing classes for utility dogs.

Definition be made as to what constitutes a puppy, novice, maiden, etc.

Rule 1, add the words "unless otherwise specified."

Rules 8, 9, 12, 20, 23 and 26 reconsider.

It was also decided to ask the committee to consider the question of inspection of dogs before trials and leading dogs on to the grounds before trials.

The meeting terminated with a vote of thanks to the chair.

June 10, 1937.

THE WESTERN MAIL.

WAWSDA
committee
meeting

The Working Sheep Dog

Official Organ of the
W.A. Working Sheep Dog Association.

THE NORTHAM TRIALS.

Association Meeting.

A COMMITTEE meeting of the West Australian Working Sheep Dog Association was held on June 2. Mr. R. Carroll was in the chair, and Messrs. E. T. Loton, W. G. Burges, R. H. Wallace, D. S. Horwood, R. Wall, B. Wall and A. Currie were also present. Apologies were received from Messrs. J. C. Bushell, O. Sagers, G. A. W. Plesse and V. L. Bode.

It was resolved on the motion of Mr. R. H. Wallace, seconded by Mr. D. S. Horwood, "that a letter of sympathy be forwarded to Mr. A. L. B. Lefroy, at present in hospital as a result of an accident."

A letter was received from the Northam Agricultural Society stating that they would be agreeable to co-operate with the association in the conducting of field trials at the Northam Agricultural Society Showgrounds in August, under similar conditions to 1936. The schedule was then considered, when it was agreed to adopt the schedule which operated in 1936, subject to the following amendments:—

Closing of entries: Entries to close two weeks before the trials.

Entry fees: For the puppy and maiden and farmers' classes, members 3/, non-members 5/, and for the open class, members 5/, non-members 7/6.

Admission charges to be the same as 1936. Members to receive one lady's ticket in addition to their own.

Events: The novice dog or bitch class to be deleted and substituted by farmers' class. The dog to muster and yard two lots of 10 sheep.

Puppy class, first prize, £3; second prize, £1.

Maiden class, first prize, £4; second prize, £2; third prize, £1.

Farmers' class, first prize, £5; second prize, £2; third prize, £1.

Open class, first prize, £8; second prize, £3; third prize, £2.

It was reported that the Royal Agricultural Society was donating £20 towards the prize money. Obstacles to remain the same for general classes, but to be amended for the farmers' class.

Trial Rules.

The trial rules were then considered, when it was agreed that the rules which operated at the 1936 trials be approved for the forthcoming trials, subject to the following amendments:—

Rule 6: Provide for only 10 minutes for the farmers' class.

Rule 9: Amended to read, "If the working of any dog is of inferior merit, the judge shall be instructed to terminate the trial before expiration of the time allowed."

Rule 23: To be amended to read as follows: "The trial steward will, at the request of the competitor, explain the course before the commencement of the trial."

Rule 26: Amended to read, "When penning sheep, competitors must keep one hand on the gate or hold rope attached to gate."

Add New Rule 31: "Any stick held by the worker of the dog shall be no longer than two feet."

Add New Rule 32: "Any competitor who is not on the grounds in time to compete for any trial for which he has entered, shall not be allowed to compete in that event."

It was also decided to amend certain rules in order to provide for the farmers' class.

On the motion of Mr. E. T. Loton, seconded by Mr. R. H. Wallace, it was resolved: "That the trial committee consist of Messrs. R. Carroll, W. G. Burges and C. W. Martin."

It was resolved on the motion of Mr. E. T. Loton, seconded by Mr. W. G. Burges: "That in the event of entries being more than could be handled in two days, the committee be empowered to limit entries to two to each competitor in any one class—the competitor to have the right to nominate those dogs he wishes to work."

The question of lengthening the cast in the open and maiden trials in order that a dog of inferior merit would be passed out of the trial earlier, was referred to the trial committee for consideration on the motion of Mr. R. W. Wallace, seconded by Mr. D. S. Horwood.

A suggestion that the first obstacle in the trials be made simpler was referred to the trial committee for consideration on the motion of Mr. R. H. Wallace, seconded by Mr. B. Ball.

Date of Trials.

It was resolved on the motion of Mr. E. T. Loton, seconded by Mr. R. H. Wallace: "That the dates of the trials be August 24 and 25, 1937, and that the starting time on each day be left in the hands of the trial committee."

The Judges.

It was resolved on the motion of Mr. W. G. Burges, seconded by Mr. E. T. Loton: "That a junior judge be appointed for the puppy and maiden classes, and that a senior judge be appointed for the farmers' and open classes."

The following judges were then appointed:—

Farmers and open classes: Mr. R. Wall.
Junior classes: Mr. Justin Walsh.

It was further resolved on the motion of Mr. W. G. Burges: "That a sub-committee of three be asked to prepare a list of judges for the future."

The question of the obtaining of sheep for use at the forthcoming trials was discussed, when it was decided to ask Mr. Martin, of Northam, to attend to this as in 1936. A list of members of the association to date were submitted to the meeting and approved on the motion of Mr. B. Ball, seconded by Mr. D. S. Horwood.

Country Show Trials.

In view of a letter which was received from Kojonup asking for the association's assistance in framing conditions and plan of obstacles for their use at trials to be conducted at their show, it was resolved that the secretary be asked to frame conditions and plan of obstacles for the use of country shows subject to the approval of the president.

It was resolved that the final pen in the obstacles for the forthcoming trials measure 8ft. by 12ft.

trial plans
inc.farmers
class
&
review of rules
etc

Several of the founding members feature frequently in newspapers of the time. As well as breeders of top working sheepdogs we see their names listed at Agricultural shows as winners in other animal categories as well: horses, sheep, cattle.

Association Formed.

NORTHAM, Dec. 4.—At a meeting held here on Saturday afternoon, it was decided to hold the West Australian Working Sheep Dog Association and the following officers were appointed for the year to commence on January 1:—Patron, Mr. V. L. Bode; president, Mr. R. Carroll; vice-presidents, Messrs. W. G. Burges and Mr. A. Plesse; secretary, Mr. C. W. May; treasurer, Mr. L. Lefroy; general committee, Messrs. J. C. Bushell, D. S. Horwood, R. H. Wallace, B. Ball, E. T. Loton, E. Jones, J. E. Gray, R. Wall, A. Currie, O. Siggers, E. G. Riley and G. B. Kearney;

R.H.WALLACE

THE WEST AUSTRALIAN, TUESDAY, APRIL 12, 1932. (1932)

RURAL INTERESTS.

Border Collies in W.A.

Though the highly bred Border Collie sheep dogs which are bred by the enthusiastic Mr. R. H. Wallace, manager of the New Zealand and Australian Land Co's 52,000 acre stud property in the Moora district, have been distributed widely in this State, few realise the outstanding breeding behind them. One hears much in praise of Mr. Wallace's Border Collies and very few complaints. He breeds them as a hobby and, as with anything else that he puts his hand to, does the job properly. In the past, when building up his small stud, he has paid big money for outstanding dogs and bitches, particularly from New Zealand, where the Border Collie has such a big following. On one occasion the 100-guinea mark was exceeded. It has now been substantially exceeded, for Mr. Wallace has brought out from Britain, Millars Ben, regarded by many at the time of purchase as probably the best sheep dog in Great Britain and certainly the best that has ever come to Australia or New Zealand. Ben was to have taken part in important exhibitions throughout Canada and the United States this year. Good sheep dogs are a decided asset to the pastoral industry and all who appreciate a good dog will join in commending Mr. Wallace on making such a valuable purchase.

R.H.Wallace transferred to NSW

Sheepdog's £1037 Prize-Money.

A famous sheepdog, Ben, which won the international trials at Hyde Park, London, in 1931, has recently arrived at Tottra Station, Western Australia, he is owned by the Wallace family. Altogether he won £1037 in English prize-money, and his progeny have also been showing their ability in the trial field.

Ben was imported 1932.
We find reports in papers of WA, SA & Tas.

Western Mail (Perth, WA : Thursday 1 September 1938

the Perth Royal Show.

ANNUAL GENERAL MEETING.

The Chairman's Report.

AT the annual general meeting of the W.A. Working Sheep Dog Association held at Northam on Tuesday, Aug-

Mr. R. H. Wallace, who had much to do with the forming of this association and who has been a keen supporter of sheep dogs for a great many years, was transferred to New South Wales shortly after the 1937 Perth Royal Show. His departure has been a great loss to this Association and we wish him every success in his new appointment.

R.H.WALLACE cont

Western Mail (Perth, WA : Thursday 14 April 1932

THE WESTERN MAIL

May 27, 1937

WORKING SHEEP DOGS.**A Champion for Western Australia**

Mr. James Lilico, of Mammermoor, Winton, Southland, New Zealand, well known as a breeder and trainer of working sheep dogs, writes as follows:—

"After the long discussion on Border Collie v. Kelpie, your readers will be interested to hear that I have just purchased Millar's Ben, the best sheep dog in Britain, and certainly the best Border Collie to cross the equator during the 40 years I have been associated with importing. Mr. R. H. Wallace, of Tootra Station, Western Australia, commissioned me to find him the best sheepdog I knew of, and I had no hesitation in picking on Ben, as both for trial records and type there is no other home dog can approach him. What is of special interest to Australians is that Ben is out of Tot, a full sister to Frisk, which I sold to Mr. Arthur Collins, of Lucernedale, many years ago. The success of Frisk on the trial ground was such that leading competitors in Sydney and other centres put him down even yet as the best Border dog imported into the Commonwealth. Ben stands on a still higher plane. I consider him the most perfect working sheep dog living to-day, and I can fairly claim to speak with some degree of authority on the subject. His latest win was the championship in Hyde Park (London), with a run described as the most brilliant ever seen on a British trial ground. The price is naturally a long one, and Mr. Wallace is without doubt one of the gamest buyers in the thousands I have traded with, and deserves credit for bringing such a notable dog into Australia."—"The Australasian."

A London journal, commenting on one of Ben's recent performances, wrote:—

"Sandy Millar, with Ben, unquestionably put up the most magnificent work of the day. A beautiful outrun for the first lot of sheep and 'fetch' through the hurdles was followed by an equally good return for the second lot.

"While Ben was lifting the second lot, the first, previously left at the post, decided to return. Undismayed, Ben rounded them up with the others and brought the whole 20 through the hurdles. Ben completed the course with perfect shedding and penning. A spectator who had seen every international contest yet staged said that the run represented the highest form ever achieved by any one shepherd and dog."

R. H. WALLACE, Tootra Station, Walebing
BORDER COLLIE WORKING SHEEP DOGS
BRED FROM THE WORLD'S BEST.

Dogs which stand out prominently in the Pedigrees of those in my Kennels are:—

BEN.—No. 891 winner of £1,037 in Stake Money, also Trophies too numerous to mention. After he was purchased for Australia, £320 was offered by Mr. Ainslee McDougall for "BEN" to go to America.

HERDMAN'S TOMMY.—The greatest Sire of the latter years of last Century.

SCOTTS KEP.—Probably the greatest Sire of all time.

DON JUNIOR.—Described as the St. Simon of Sheep Dogs during the past 40 years.

OTTERBURN MOSS.—1908 International Winner.

ARMSTRONG DON.—1911 International Winner.

BROWNS LAD.—1913 International Winner.

TELFERS HAIG.—1921 International Winner.

SPOT 1.—1923 International Winner.

MILLARS SPOT.—1925 International Winner.

HAYTONS GLEN.—1926 International Winner.

BAGSHAWS LAD.—1927 International Winner.

WILSONS CRAIG.—1930 International Winner.

My latest importation is LAMMERMOOR BONNY. This Bitch is smooth coated, upstanding with beautiful temperament, built on racy lines and should be most suitable for W.A. conditions and since arrival has whelped a litter of Pups sired by "QUEALES ROY."

Dogs which figure in her pedigree are "HUNTERS GLEN," "SPOT 1" (a dog sold for £175), "HUNTERS FLY" recognised a few years ago as the best Brood Bitch of all time in Great Britain, "HAMILTONS DON" and "MAID," "WILSONS CRAIG" winner of the Scottish National Cup at Aberly in 1931 and again at Beattock in 1932. Craig also won the Morcombe Cup in 1929 and the International in 1930. He is the Sire of "Roy" the Winner of the International for 1934 and again in 1936. Other Dogs for which it would take too much space to give details are "DICKSONS HEMP," "CRAIGS MIST," "STORRIE'S MOSS" the well-known present day sire and "NELL" the best Bitch in Great Britain today, are dogs which figure directly in the breeding of "LAMMERMOOR BONNY."

15 February 1933

W.A. BRED COLLIE BITCH.**PURCHASED FOR VICTORIA.**

Elder Smith & Co. Limited, report having effected the sale on behalf of Mr. R. H. Wallace, of "Tootra" Station, via Walebing, of a young black and white Border Collie bitch to a prominent breeder in Victoria. This bitch was bred at the "Tootra" Kennels, and is by Border Noble, a very successful stud sire, from "Fleet," a noted prize-winner.

The shipment, which was effected last month, is particularly interesting in that the bitch was mated at Tootra to the famous dog Ben purchased last year by Mr. Wallace from Mr. Alex. Millar, Newhall, Scotland, Ben has won over £1000 in prize money, his crowning triumph being the winning of the Hyde Park Championship.

Mr. Wallace has already shipped several of Ben's progeny in fulfilment

R.H.WALLACE *cont*

Western Mail (Perth, WA) Thursday 17 June 1937

A VISIT TO TOOTRA STATION.

Martingale "Goes Bush."

Recently I was given an opportunity to "go bush" for a few days, and see some horses, sheep, and sheep dogs, for Dick Wallace had invited Charles and me to spend a long week-end at Tootra Station, Walebing. Come with me then to the starting point, for

Border Collie Stud.

Prominent near the commodious homestead are the well-equipped yards and kennels which house the Border Collies. Mr. R. H. Wallace, manager of Tootra station is an enthusiast in the breeding of these wonderful dogs, and has imported some world-famous workers, including Ben No. 891, which won over £1,000 in stake-money and enough trophies to fill a pantechichon.

Bred from generation after generation of champions, the instinct to work sheep is inherent in them.

During my visit I saw young dogs taken out for their initial run with sheep, and their first move was to slink round the flock until they had them bunched in a compact mob, then to stand off with lolling tongue and delighted expression, keeping an alert eye on the master to watch for his signals. A short whistle, and they would stop even in mid-career, and "clap down," for this part of their training is completed long before they are allowed to run with sheep.

I spent some enjoyable hours in the paddocks watching young dogs acquiring the skill that would later be exhibited on the trial course, and seeing some of the old stagers go out in a perfect semi-circular cast to bring their sheep in a straight line to their master's feet.



"Martingale" with some of the station pets.

J.Mallet (Martingale) was a great help to, and supporter of the WAWSDA. As well as promotion by comprehensive reporting in the Western Mail, he attended meetings and became a trial judge.

THE WESTERN MAIL, June 13, 1946 -

The Working Sheep Dog

by J. Moses, Nagambie, Vic.

dog. Very few of them take kindly to a change of owners, especially after reaching two years old. I have known several instances where they have travelled more than 50 miles through unknown country to reach their old home. I

"QP"

Another instance is that of "Ben"—a smooth-coated Collie bred and trained by the champion Scottish trainer—Alec Miller of Darvel, Ayrshire. He sold "Ben" for £150 to Mr. R. H. Wallace of Tootra Station, Western Australia. When "Ben" arrived at Fremantle he was placed in quarantine, but after a few days he escaped. He was picked up by some fishermen swimming out to sea. He had already swum about a mile from shore and was going in a north-westerly direction. No doubt he intended to make a bee line home to Scotland. Before coming to Australia "Ben" won £1,037 in prize money at sheep dog trials, also the

Western Mail / 16 October 1947 |

Current comment on rural matters of the moment

by MARTINGALE

For Soldier Settlement

TOOTRA Station, Walebing, which has recently been purchased for War Service Land Settlement from the New Zealand and Australian Land Company, will

I visited Tootra about ten years ago when it was under the management of genial Dick Wallace, a well-known sheep dog breeder and

The Tootra Merino stud based on Uardry-bred Peppins enjoyed a high reputation for its rams and twice annexed the Boonoke cup at the Royal Show. The stud was dispersed when Dick Wallace left this State to take over the management of the Company's Bundure stud, Jerilderie, New South Wales.

J.C.BUSHELL

THE WEST AUSTRALIAN, SEPTEMBER 23, 1936. (1936)

trial at Northam last month. An association is badly needed to give the lead and to arrange the organisation necessary for such fixtures. The arrangements for the Royal Show week meeting, which incidentally will be held in the meeting tent near the cattle pens on the grounds at 4.30 p.m. on Tuesday, October 6, are in the hands of one of our keenest enthusiasts, Mr. J. C. Bushell, of Trelawney, Watheroo, and it is to be hoped that there will be a good attendance of interested owners.

Western Mail (Thursday 4 November 1948

This Northam stockbreeder has gone far towards the establishment of a

"PURE-BRED FARM"

by MARTINGALE

ALTHOUGH most stockbreeders have, at some time or other, toyed with the idea of possessing a "pure-bred farm" where all the livestock on the place were pedigreed top-notchers, very few have gone so far towards realising their ideals as has Jack Bushell of Trelawney, Northam, whose property I visited a few weeks ago. He has studs of Corriedale sheep, Jersey cattle, kelpie sheep dogs and thoroughbred horses

An outstanding figure in stockbreeding circles in more senses than one—for he stands four inches over six feet—Jack

Although his stalwart figure and cheery mien are apt to belie the fact, Jack's health was seriously impaired by war service—

Nevertheless he has played a prominent part in many bodies connected with agriculture for a number of years.

He is a Councillor of the Royal Agricultural Society and has been Chief Cattle Steward at the Royal Show for many years. He is on the committee of the Northam Agricultural Society and has served as president of the W.A. Working Sheep Dog Association.

Kelpies

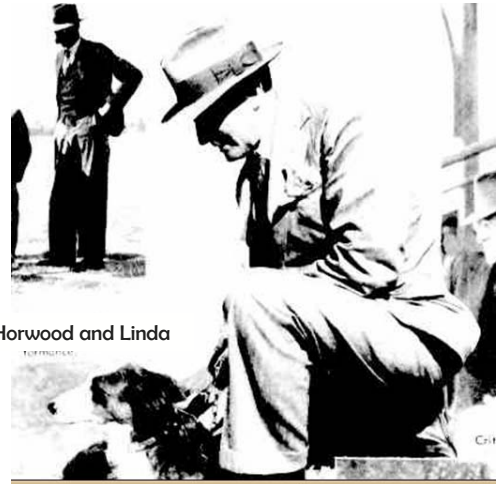
JACK BUSHELL'S love of the kelpie breed of sheep dog extends back for a number of years to when he purchased a tan bitch from J. J. Kennally, the well-known Victorian breeder.

D.S.HORWOOD

Western Mail (2 September 1937 |

THE NORTHAM TRIALS.

and today. The outstanding performance of the trials was that given by Mr. D. S. Horwood's Linda, who won the open trial for the second year in succession.



Mr D.S.Horwood and Linda

Western Mail (September 1952 |

by MARTINGALE

Few competitors had sufficient confidence in their entries to move between obstacles without working their dogs. I well remember the excellent impression that Mr. D. H. Horwood always made when working Linda, that great old lady of the trial course. Once the sheep were through an obstacle Mr. Horwood would stroll off, jauntily swinging his stick and never giving a backward glance. He would step into the circle at the next obstacle and there wait nonchalantly for the sheep to be brought to him. It was mighty good showmanship and must have earned his dog quite a few points for general work.

"QI"

OWEN & NORMAN SAGGERS

Both supporters of the new association. Owen of Tambellup and his younger brother Norman of Mingenev.

Records of N.Saggers competing back in 1919. (his dog Ginger performing well in competition with R.Wall's Red Cloud)

founding members of the West Australian Working Sheepdog Association

E.G.RILEY

The West Australian | Thursday 4 October 1951

The veteran sheepdog breeder and trainer, Mr. E. G. Riley, of Gingin, scored a notable victory in the final round of the State sheepdog championships at the Royal Show yesterday when his entries took first and second places.

Ernie Riley of Gingin, is the only man to have held the championship more than twice and with four wins to his credit he is likely to hold that record for a long time.

Western Mail 14 January 1954

Sheepdog puppy flown east

AIR-FREIGHTED from the Riley kennels, Gingin, to South Australia last Monday night was a two-month-old male pup by former State champion sheepdog Riley from Tarlarro Lass.

This is the first dog transferred from these kennels to another State, though Mr. C. G. Riley annually sells from 20 to 30 dogs locally.

The puppy's new master is Mr. Alan Grant, grazier of Sandalwood, South Australia.

The deal has eventuated from Mr. Riley's visit to the Eastern States last April with a string of dogs including Riley to contest the national sheepdog title.

On that occasion Mr. Grant was so impressed with Riley's showing that he commenced overtures for the purchase of one of that dog's progeny.

Mr. Riley has also received similar inquiries from New South Wales, but has not yet complied with any of these.

He has not yet decided whether to compete in the forthcoming national trials in Canberra this year.

“QI”

E.JONES

The West Australian (Perth, WA) | Saturday 29 September 1951

CHAMPION READY FOR A CHALLENGE



Mr. Jones, who is the owner of the present State champion sheepdog, Quentin Boss, has been competing in sheepdog trials for 40 years.

G.B.KEARNEY

The West Australian | Wednesday 20 January 1937

Mr. G. B. Kearney, chief auctioneer for Dalgety and Co., Ltd., Perth, who has been transferred to a similar position in the Melbourne branch of the company will leave for Melbourne tomorrow by the Westralia.

TOM (LANCE) BARNETT



Tom Barnett worked J.C.Bushell's Trelawney dogs with great success

founding members of the West Australian Working Sheepdog Association

BEN BALL

Western Mail (Perth, WA : Thursday 4 September 1947

AT last year's annual meeting of the W.A. Working Sheep Dog Association it was decided to stage the 1947 trials at Wagin instead of at Northam which has always been the venue in past years. The innovation was a popular one, and stimulated by the boundless enthusiasm of Mr. Ben Ball, who has long been one of the Association's stalwarts, local dog owners and the general public of Wagin united in giving a gratifying measure of support. Many entries were received and the standard of work throughout showed a pleasing improvement on that of the first post-war trial held a year ago.



BOB WALL

Western Mail



RED CLOUD: A famous kelpie of days gone by. He was owned and worked by Mr. "Bob" Wall.

The "original" Red Cloud became a legend in his day. Reports of his winning trials in 1915 - 18. Red Cloud and other dogs worked by R.Wall were entered in trials by H.Wills & Co.

A.CURRIE

The West Australian (Perth, WA | Friday 13 October 1933



Poppy (dam) Sky Laddie (sire) Mollie Jeanie Cloud Glen
Owned and bred by A.Currie, Bruce Rock WA

A mother and father with their five seven months' old pups. By all competing in the sheep-dog trials they established what is believed to be an Australian record.

Western Mail (Perth, WA : / 19 August 1937

WAWSDA's
first
competition

THE NORTHAM TRIALS.

Sixty-three Entries Received.

A GRATIFYING number of entries have been received for the trials to be conducted at the Northam showground on Tuesday and Wednesday next by the West Australian Working Sheep Dog Association and there is every indication of the association's first competition being highly successful. Altogether, 63 entries have been forthcoming from 14 owners compared with 57 last year when the trials were conducted by the Royal Agricultural Society.

Unfortunately, owing to shearing commencing next week, Mr. R. H. Wallace, of Tootra, has been unable to enter his dogs but other well-known owners' teams will be competing.

rules

THE WEST AUSTRALIAN,

JUNE 5, 1937.

This Season's Plans.

The committee of the West Australian Working Sheep Dog Association met on Wednesday to consider the conditions applying to its annual championship trials, to be held at Northam in co-operation with the Northam Agricultural Society.

The committee decided to delete one of the maiden classes this year, and to include in its stead a class to be known as the farmers' trials. In this event the dog will be required to assemble two lots, each of ten sheep, put them into a yard and subsequently through a drafting race. It will be the first time this type of trial has been attempted in Western Australia, but it has proved very successful in other States.

Country agricultural societies which propose this year to hold sheep dog trials are requested to conduct them under the rules drawn up by the association, copies of which may be obtained from the secretary (Mr. C. W. May) at the office of the Royal Agricultural Society, William-street, Perth.

farmers
trial first
for WAWAWSDA
rules for
country
shows

A feature of the competition will be the inclusion for the first time of a trial for farmers' dogs

member. Special rules have been drawn up for this class which has attracted 16 entries. Entries for the other classes are as follows:—Class 1 (puppy dog or bitch, 12 months old or under), 8; Class 2 (maiden dog or bitch), 18; Class 3, open (dog or bitch), 21. Following is a list of owners who have entered dogs:—Messrs. G. E. Bagshaw, Kellerberrin; B. Ball, Wagin; W. C. Ball, Kojonup-road, Katanning; T. Barnett, York; W. G. Burges, Tipperary, Burges' Siding; J. C. Bushell, York; G. Dinnie, Serpentine; D. S. Horwood, Swan View; E. Jones, Burges' Siding; R. Jones, Burges' Siding; J. Knapp, Gingin; E. G. Riley, Gingin; N. Sagers, Mingenew; A. Wroth, Deepdale, Toodyay.

Lots will be drawn to determine the order of competition in the various classes. In the event of an owner having entered more than one dog in a class he will have the right to elect which of his dogs shall start first.

Dogs in the puppy and maiden classes will be set less formidable tasks than those in the open class as they will have to negotiate only a gate and a race to reach the pen against two races and a gate for dogs in the big class. For class 4 (farmers' trial), the last competition in the trials, the rules require each dog to bring two successive flocks each of 10 sheep up to the worker. When the flocks have been joined they will be driven into an enclosure and the dog will then force them through a drafting race and work them to a paddock. The rules governing crossing the cast, assisting the dog excepting by whistle, signal or word of mouth, and the competitor stopping to work the dog when moving from one point to another will not apply in the farmers' class. The rules provide that in this class "the worker will be allowed to give the dog such assistance as he may desire provided always that the extent to which the dog is assisted by the worker shall be taken into consideration by the judge in making his awards." Competitors will be allowed 10 minutes against 15 minutes for competitors working dogs in the conventional classes.

Points in these three classes will be awarded as follows:—Cast, 12; approach, 5; bringing, 8; command, 20; obstacles, 25; general work, including force, steadiness, and control of sheep, 30; total, 100. In the farmers' class points will be awarded as follows:—Cast, 15; bringing, 15; command, 20; yarding and forcing, 25; general work and steadiness, 25; total, 100.

The judge for the puppy and maiden classes will be Mr. Justin Walsh, of Northam, and for the open and farmers' classes, Mr. R. Wall, of Subiaco.

"The Western Mail," which is anxious to assist the association as much as possible, has presented a cup valued at £5/5/

WAWSDA's
first
competition

THE NORTHAM TRIALS.

trial was the first to be conducted by our infant Association and it was pleasing to note the interest displayed and the sportsmanlike spirit in which decisions were received.

Some excellent exhibitions were staged by both the human and canine competitors, including several charmingly-rendered solos on the whistle, a display of classical dancing, a magnificent impersonation of a man conducting a symphony orchestra, and a marvellous exhibition of self-control when the dogs were within earshot of the ladies.

For many years the trials were a feature of the Royal Show, but in view of the time taken to run them, the many distracting influences that interfered with the work of the dogs at the Claremont Showground, and the inconvenience which farmers were put to in bringing their dogs to Perth, it was decided, two years ago, to hold them in Northam. Last year's Northam trials were conducted by the Royal Agricultural Society, but this year the work was taken over by the Working Sheep Dog Association. There were 63 entries this year compared with 56 last year, and the judges expressed the opinion that the standard had advanced considerably.

and today. The outstanding performance of the trials was that given by Mr. D. S. Horwood's Linda, who won the open trial for the second year in succession, finished second in the farmers' class, and

winner: D.Horwood & Linda

The Farmers Trial.

allocation of points. It showed a number of the open trial dogs out of their depth with a mob, and one of the best performances was that of a 15-year-old one-eyed farm dog, a typical old stager, who, although showing no polish, worked serenely along and completed his trial to score 81 points. He had his own ideas about casting and the loss of these points robbed him of a place.

The event was won by Mr. N. Saggars's Lass, who revealed herself a good type of farm dog and gave an almost perfect display in good time. She secured 91

Sheep Dogs on Trial

What a photographer saw at the annual sheep dog trials at Northam on August 25. A full report on the two-day trials appears in the agricultural section of this issue.



Mr E Riley's Jean being admired after her good performance

Mr D.S.Horwood and Linda

Critics in the grandstand

Western Mail Thursday 8 April 1937



1937

TRAINING THE TRIAL DOG.

(By D. S. HORWOOD.)

The fact that the Working Sheep Dog Association has got away to a flying start coupled with the number of promised entries, leads to the expectation of record and severely contested trials this year.

But all the same, we want new and elastic blood, and for those who are entering for the first time and will soon be commencing training, an outline of the sort of performance expected of a good trial dog may save a new arrival from getting away on the wrong foot.

A commonly-held belief is that the dog who races the sheep through the obstacle in the shortest time takes the prize. It is entirely wrong however. The obstacles are there, not to provide a circus turn, but to determine the degree of intelligence, patience, good temper, obedience, and so forth possessed by the dog.

As a matter of fact young dogs are bored stiff by hurdle work and are often ruined by being given too much of it early in their training.

Here are the main ideals in a nutshell:—

- 1.—Not to move your sheep out of a walk.
- 2.—Not to deviate a yard from their course. (Their course is a straight line from them to you.)
- 3.—To put them through the obstacles without allowing them to run even once round the hurdles.

It sounds impossible but it is done more often than might be imagined.

The full title is Sheep Dog Field Trials and as the name implies it is the field worker, the outside dog, the dog for the big paddocks and large flocks, the dog for the bush and the mulga, not the hustling, driving, barking yard-dog who is being judged on trial day.

The dog the judge is looking for is the dog you can send out as far as the eye can see and further; the dog that will beat up the scrub and the mulga and muster clean, using ears, eyes, nose and wits on the job; the dog that works equally well a mile away, as under the whip.

Rightly the cast should never be under 200 yards, but handicapped as we are by the size of our show grounds it rarely runs to more than half of that and the sneers of the New Zealanders at that aspect of our trials are liable to rankle.

What was described as the best casting dog in the East at the time, performed like this.

He sat flat on the ground about two yards behind his master and with the sheep about 150 yards away he described a semi-circular cast till he reached a point behind the sheep dead in line and then dropped like a stone. His pace was a smart canter and his head pointed towards the sheep the whole time his body hugging the ground and curving slightly to fit the semi-circle he was travelling.

Judges do not favour a headlong rush in a cast. Quite right too. A blind cast in a paddock that started off with a mad gallop would be very liable to land the dog in the middle of the mob before he could get his bearings.

A crossed cast, that is a cast in which

the dog starts out on one hand and crosses over between his master and the sheep to the other hand "rings the bell," and the exhibitor walks off muttering between his teeth. The dog is rung off, if at any time he comes between the exhibitor and the sheep.

Very frequently a cast is stopped short of the complete semi-circle and the dog approaches the sheep from one side. That is a fault that is prevalent among the best of dogs; it is a fault nevertheless and loses points. Never cast a dog from in front of you, start him from behind—well behind.

The approach is the next phase and the approach tells the judge a large part of the story. A bustling jerky approach to wild sheep and you might as well take the dog by the collar and lead him gently but firmly off. The approach is where the heady clever dog looks over his sheep, sums them up and decides on his plan of campaign. In this connection Mr. Wallace was telling me of one time when he put Ben round three sheep and although Ben was not usually slow on the lift, on this occasion he wouldn't come in—kept standing off and eyeing them warily and shifting his position. One of the sheep turned out to be blind. A good dog always gives the impression that if a sheep got away from him he would never be able to look himself in the face again. The appearance should be slow, steady and deliberate. It should be as inexorable as fate, and smooth as cream.

In that dozens yards or so, the sheep should learn respect for the dog but not fear. A vacillating nervous fussy approach is weak.

Bringing.

This is where control enters so largely. Keep your dog well behind the sheep. If you can't do it any other way sit him down and make him come on to them ever so slowly. Never mind the clock in a trial, concentrate on the job.

To guide them he must go out on the wing quickly, quietly, and smoothly. Running backward and forward behind them like driving a mob of sheep won't do at all.

Obstacles.

The first obstacle is the easiest, and the hardest to put the sheep through as a rule. Until they have been put through once they don't seem to know what it is all about.

For the obstacles, your dog should be quick and smooth and promptly obedient. The reason why so many of the best dogs are hypersensitive and highly-strung is to ensure that split second obedience that makes all the difference.

The experienced dog, makes many of his moves in anticipation, he knows what the sheep are going to do before they do it.

Jerky movements, a bold bullying style or a vibrating tail excite the sheep and keep them staring at and fighting the dog instead of looking behind to see a get-away.

For trial work the sheep should be carefully chosen. Ewes are "out," also lambs; sheep that have been hand-fed at any time of their lives, and woolly sheep are unsuitable.

A good dog deserves a run for his money and hand-fed pets don't give him a chance to "show his stuff." With them, the hound from the Dogs' Home, that doesn't know his own father, is just as likely to make as good a showing as the dog with 300 years of breeding behind him, and this is hardly fair because if you put the "illegitimate" after a mob of sheep in a Nor'-West paddock you wouldn't see them again until shearing time.

A proposal put forward by Mr. Ball, of Wagin, for a trial for farmer's dogs is likely to receive strong support and unless the obstacles to its adoption prove insuperable it will almost certainly go through.

Western Mail Thursday 9 June 1938



SHEEP DOG TRIALS.

Northam and State Championship.

With the co-operation of the Northam Agricultural Society, the West Australian Working Sheep Dog Association will again conduct its annual championship meeting at Northam.

An important event this year will be the West Australian championship, to be conducted at the Royal Show. The dogs eligible to compete for this award will be the winners of the maiden, open and farmers' classes and also the two other dogs securing the highest points. For this event, Mr. A. L. B. Lefroy is presenting a challenge cup and Westralian Farmers, Ltd., are donating a first prize of £10, while the Royal Agricultural Society is providing a second prize of £5.

Championship
run off to be at
Royal Show

Western Mail Thursday 8 September 1938

OFFICIAL ORGAN of THE ROYAL AGRICULTURAL SOCIETY of WA

THE ROYAL SHOW.

A MONTH HENCE.

Catering for the Public.

After a lapse of three years, sheep dogs will again be seen in action at the show. The trials, however, will not be open to all-comers, and only those dogs which distinguished themselves last week at the field trials held at Northam by the Working Sheep Dog Association will compete. Five dogs will compete on Tuesday and, after lunch on the following day, the two most successful dogs will compete for the State championship. For this competi-

Western Mail Thursday 30 June 1938



The Northam Trials.

The schedule of prizes and events and also the regulations governing the annual championship meeting of the West Australian Working Sheep Dog Association, to be held at Northam on August 23 and 24 are now available. The events will be the same as in 1937, and are as follows:—

Class 1.—Puppy dog or bitch, 12 months old or under at the date of competition. First prize, £3, second £1. Class 2.—Maiden dog or bitch that has never won first prize in a sheep dog trial prior to the date of competition. First prize £4, second £2, third £1. Class 3.—Open dog or bitch, first prize £8, second £3, third £2. Class 4.—Farmers' trial (open). Each dog will be required to bring two successive flocks of 10 sheep up to the worker of the dog. When these two flocks are joined they will be driven into an enclosure. The dog will then force the sheep through a drafting race and work them to the paddock directed by the stewards.

The only alteration from last year's conditions is that a gate will be fixed to the drafting race and will be worked by the owner of the dog. The sheep are to be drafted alternatively to either side of such gate and one point will be deducted for each sheep wrongly drafted. The

Western Mail (Perth, WA) Thursday 18 August 1938

NORTHAM TRIALS.

Exceptional Entries.

Particularly good entries have been received for the annual trials of the W.A. Working Sheep Dog Association to be conducted at Northam on Tuesday and Wednesday, 23rd and 24th instant.

The total of 71 nominations constitutes an absolute record for sheep dog trials held in Western Australia.

71 entries

Western Mail | Thursday 1 September 1938

1938

Jean Wins Open Class.

(From Our Special Representative.)

NORTHAM, Aug. 24.—Giving an almost faultless exhibition, Jean, a three-year-old Border Collie bitch, owned and worked by Mr. E. G. Riley, of Gingin, won the open competition today at the West Australian Working Sheep Dog Association's annual field trials. She scored 98 of the 100 points available, losing two points for bringing, and penned her sheep in the unusually good time of 6min. 43sec. The judge (Mr. Donald Paterson, of Pinjarra), described her trial as the most finished exhibition he had ever seen. Second place was taken by Mr. E. Jones's Don (79 points) and last year's champion, Linda, who is owned by Mr. D. S. Horwood, came third with 62

Earlier Performance Recalled.

The winner, it is stated, was bred by Mr. W. J. Tomlinson, of Kujja. Mr. Riley has owned her for a little more than two years. Although Jean's time was excellent, it was not a West Australian record. One dog at least to put up a better performance was Kep, who, about 20 years ago, did a course on the Claremont show-ground for Mr. Paterson in 3min. 53sec. Yesterday Mr. Paterson was carrying a gold watch presented to him to commemorate Kep's long and remarkable career in the ring.

Elimination trial
at Northam
Championship at
Royal Show

Western Mail Perth, WA : Thursday 6 October 1938

34 THE WESTERN MAIL October 6, 1938
The **ROYAL SHOW of 1938**

SHEEP DOG TRIALS.

JEAN WINS CHAMPIONSHIP.

A Fast Performance.

Judge: Mr. R. Wall.

Only two of the five dogs entered for the preliminary round of the State championship sheep dog field trials succeeded in completing their trials at the Claremont Show ground on Tuesday.

These two, Mr. E. G. Riley's Jean and Mr. J. C. Bushell's Trelawny Dick, contested the final on Wednesday. Jean gave an outstanding performance, negotiating the three obstacles and penning her sheep in the remarkable time of 3min. 44sec., and scoring 88 out of a possible 100 points. Trelawny Dick just managed to complete his trial in the 15 minutes allowed and scored 78 points. The other three dogs were called off for crossing their casts or splitting their sheep.

1938 State Champion: E.G.Riley's Jean

WAWSDA
committee meeting:
list of judges

Western Mail (Perth, | Thursday 9 June 1938 |

DOG TRIAL JUDGES.

Assistance for Country Societies.

At a recent committee meeting of the West Australian Working Sheep Dog Association, it was decided to publish the names of gentlemen which the association deemed to be competent trial judges, in order to assist country societies who wish to conduct dog trials as features of their annual shows.

The following list has been made available, and further names may be added at a future date:—

List of Judges.

- A. Currie, Bruce Rock.
- B. Ball, Wagin.
- A. Herbert, Wagin.
- D. S. Horwood, Swan View.
- E. Jones, Burges Siding.
- D. Paterson, Pinjarra.
- M. Rhymill, Toodyay.
- E. G. Riley, Gingin.
- J. V. Riley, Gingin.
- O. Sagers, Tambellup.
- Justin Walsh, Northam.
- R. Wall, Jolimont.

Western Mail (Perth, WA : Thursday 1 September 1938

1938

The annual sheep dog field trials of the West Australian Working Sheep Dog Association were held at Northam last week. The dogs shown below competed in the open trial and for "The Western Mail" trophy.





The

Working Sheep Dog

Official Organ of the
W.A. Working Sheep Dog Association.

ANNUAL MEETING.

Trial Suggestions.

Mr. W. G. Burges took the chair at the annual general meeting of the W.A. Working Sheep Dog Association held at Northam on August 23. Messrs B. Ball, E. G. Riley, N. Siggers, W. E. Fowler, G. Dinnie, G. Bagshaw, L. D. Corker and visitors were present, and apologies were received from Messrs A. L. B. Lefroy, J. C. Bushell, R. Carroll and G. A. W. Piesse.

Minutes of the last general meeting were read and confirmed on the motion of Mr. Bagshaw, seconded by Mr. Siggers.

Incorporation.

It was reported that it would cost from £15 to £20 to have the association incorporated. It was decided to take no action in connection with this matter.

The president's annual report and financial statement were submitted to the meeting and adopted on the motion of Mr. B. Ball, seconded by Mr. G. Bagshaw.

On the motion of Mr. Corker, seconded by Mr. Bagshaw, it was resolved:—

That a vote of thanks for the assistance rendered in conjunction with the 1938 Trials be forwarded to the Northam Agricultural Society and the voluntary workers.

It was resolved that a letter of appreciation be forwarded to Mr. J. C. Dempster, who made available the sheep for the 1938 Trials.

Suggestions.

The following suggestions regarding the

annual trials were submitted for the consideration of the committee:—

- (1) That the holding yard be completely covered in with hessian.
- (2) That a truck might be used for bringing the competition sheep into the arena.
- (3) That men liberating the sheep should not stand inside the arena fence.
- (4) That the entrance fee for the Farmers' Trials be 5/ members and 7/6 non-members.
- (5) That no competitor be allowed to make more than two (2) entries for the Farmers' Class.
- (6) That the time limit for the Farmers' Class be extended to 15 minutes.
- (7) That puppies be not eligible to compete in the Open Class or the Farmers' Class.
- (8) That a narrower race be provided for the Farmers' Class.
- (9) That the committee consider some method of advising the interested parties of dogs which are entered for the competitions and which are available for sale.

It was resolved to recommend to the committee that the 1939 Trials be held at Northam if arrangements could be made.

Stud Book Registration.

It was resolved that the committee be asked to consider some form of Stud Book or form of dog registration.

It was resolved that the subscription, 10/6 per annum, remain as at present.

It was resolved that the following be added to the List of Judges, as prepared by the Association:—Messrs. G. E. Bagshaw, G. H. Sherlock, D. Edgar, W. C. Ball, G. Dinnie, A. Glover, R. B. Williamson, R. Carroll, and M. Currie jr.

The election of office-bearers then took place and resulted as follows:—President, Mr. J. C. Bushell; Vice-Presidents, Messrs. R. Carroll and D. S. Horwood; Treasurer, Mr. A. L. B. Lefroy; Committee, Messrs. B. Ball, E. G. Riley and R. Wall.

It was resolved that the office bearers be empowered to add to the committee additional members up to the number allowed by the rules if deemed necessary.

Incorporation
- no action
at present

Stud Book
Registration
for
consideration

ANNUAL GENERAL MEETING.

The Chairman's Report.

AT the annual general meeting of the W.A. Working Sheep Dog Association held at Northam on Tuesday, August 23, the president (Mr. R. Carroll) submitted the following report:—

Gentlemen,—I wish to submit this, the first report on the activities of the West Australian Working Sheep Dog Association. As you are aware, the inaugural meeting was held in Northam on November 28, 1936, and a further meeting held on March 16 last year for the purpose of forming the constitution as drawn up by the sub-committee elected for this purpose.

The membership of the Association now stands at 30. Last year, the number was 36, four (4) of the resignations being due to the people connected with the New Zealand and Australian Land Company who are now in the Eastern States with Mr. R. H. Wallace.

member
-ship
of
30

The finances of the association at the last balance, namely, the 30th of December, 1937, showed a surplus on the operations to that date of £3/13/4. A loss of £6/12/11 was sustained at the 1937 trials, but it is hoped that a profit will be shown on this occasion. It will be remembered that last year, the trials were held on the same day as the annual sports meeting of the Northam High School which, no doubt, materially affected our gate receipts.

The trials conducted by this association have been very successful and it is quite safe to say that the entries for 1937 constituted an absolute record for sheep dog trials in this State.

The number of entries received for this year's trials totals 71.

Dealing with the trials, I would like to place on record the committee's appreciation of the assistance rendered by the Northam Agricultural Society. Much of the success has been due to the co-operation of this body and the interest displayed by Messrs. Phillips, Curlewis, Martin and several others. Members will realise that as the executive office and many of the committee are situated some distance from Northam, a great deal of the responsibility of organisation falls on the gentlemen just mentioned.

Referring to the trials, I would like to mention the State championship event which is to be held at the forthcoming Royal Show and for which only the leading dogs at the present trials will be eligible. I feel sure this association is indebted to the Royal Agricultural Society for acceding to its request for a trial of this nature.

It is pleasing to report that, during recent years, several country agricultural societies have included sheep dog events in their programmes. It is hoped that these events will be well supported, not only by members of this Association, but also by several others.

For many years, little or no interest was taken in sheep dog trials, but it is hoped that the formation of this Association will give them an added interest throughout the State.

I would also like to refer, at this juncture, to the liberal support which we have received towards the prize money offered at these trials. Most of you will realise that a small association such as this cannot finance trials at which prize money up to £40 is being paid.

The supporters which I would like to mention are:—

	£	s.	d.
The Royal Agricultural Society	20	0	0
Messrs. Elder, Smith and Co., Ltd.	4	4	0
Messrs. Dalgety and Co., Ltd.	2	2	0
Messrs. Goldsbrough, Mort and Co. Ltd.	1	1	0
Messrs. Wilcox Mofflin and Co.	1	1	0

While the Westralian Farmers, Ltd. (£10) and Mr. A. L. B. Lefroy (Challenge Cup) have contributed to the championship trials at the Royal Show.

Much of the interest in these trials and in the affairs of this association have been due to the support which has, at all times, been accorded us by our official organ, "The Western Mail." In addition to publishing information regarding the association's activities and sheep dogs generally, "The Western Mail" has presented a cup for the winner of the Open Trial. This paper is anxious to help us as much as possible and members are urged to forward to it any suitable items which come under their notice regarding sheep dogs, either in this State or elsewhere.

Mr. R. H. Wallace, who had much to do with the forming of this association and who has been a keen supporter of sheep dogs for a great many years, was transferred to New South Wales shortly after the 1937 Perth Royal Show. His departure has been a great loss to this Association and we wish him every success in his new appointment.

Mr. V. L. Bode, who was elected patron, has recently been transferred from Northam to Perth. It will be remembered that Mr. Bode was chairman of the meeting referred to in the opening portion of this report. He was keenly interested in the affairs of this body as well as the Northam Agricultural Society, both of which will miss him very much.

In conclusion, I wish to thank the members of the committee, the judges and stewards for the excellent work done by them, the official organ, "The Western Mail," the exhibitors, the Northam Agricultural Society and the Royal Agricultural Society for the assistance which they have, at all times, accorded us.

I hope that during this meeting members will freely avail themselves of the opportunity to put forward suggestions which they believe will be of assistance to the committee in connection with the annual trials and the affairs of the Association generally.

Western Mail publishes association information

R.H.Wallace a loss to WA

Trial Rules



The Working Sheep Dog

Official Organ of the
W.A. Working Sheep Dog Association.

NORTHAM TRIALS.

List of Rules.

All competitors in the annual championship field trials to be conducted by the W.A. Working Sheep Dog Association are expected to be conversant with the following rules under which the trials will be conducted.

The trials will be held on the Northam Show Grounds on Tuesday and Wednesday, August 22 and 23.

Rules.

All competitors are expected to be conversant with these rules under which the trials will be conducted.

These rules shall apply to Classes 1, 2 and 3 and shall also apply to Class 4 unless specially provided otherwise in this schedule.

1. Three sheep will be allotted to each dog.

2. Competitors in the trials shall take their place according to the catalogue, and no competitor shall be allowed on the course with his dogs for exercise on day of competition.

3. Any competitor with a bitch in season will be disqualified unless he reports her condition to the stewards prior to taking her on to the course, and she will only be permitted to compete last on the list in the heats, after inspection.

4. The moment worker and dog are at the starting peg and the sheep liberated, and so long as the sheep remain within the arena fence, they shall be the sheep to be worked by that dog.

5. The competitor, with his dog, shall stand at a flag indicating the starting point, and shall not cast his dog until directed by the trial steward.

6. The maximum time allowed to competitors shall be 15 minutes from cast.

Any competitor withdrawing his dog before the expiry of the full time allowed, unless at the direction of the judge, shall not be entitled to a prize.

7. Should the judge deem fit, he may order fresh sheep at any time during the trial.

8. If a dog shall bite, or in any way injure a sheep, such dog will at once be disqualified and the competitor held responsible for any damage done to the sheep.

9. The judge has been instructed to terminate the trials before the expiration of time allowed if the working of any dog is of inferior merit.

10. Any dog crossing the cast, or passing between competitor and sheep at any time during the trial may be disqualified.

11. The competitor will not be allowed to assist his dog in any way except by signal, whistle or word of mouth.

12. When the competitor has to move from one given point to another he must do so in a direct line, and not stop to work his dog. Infringement of this rule will entail a deduction of points for each offence.

13. Should there be a "final" trial by selected dogs, the judge will give his awards to those gaining highest aggregate number of points in both trials. At least one dog more than there are prizes offered shall be selected to compete in a "final" trial.

14. The judge's decision shall be final.

15. Scale of points:—

Cast	12
Approach	5
Bringing	8
Command	20
Obstacles	25
General work, including force, steadiness and control of sheep	30
Total	100

16. At the conclusion of each trial, the competitor must take his sheep to the enclosed yard as expeditiously as possible.

17. If, in the opinion of the judge or trial committee, any man ill-uses his dog, he will be subject to a fine of £1 and may be debarred from again competing.

18. The trial shall take place over such a course as the trial committee may determine, and any additional tests shall be over the whole or such portion of the said course as it may decide upon.

19. Any person or persons bringing dogs on the ground and allowing them to run loose, either by mistake or otherwise, except when directed by the trials steward, may be fined £1.

20. Any dog having won a first prize at any sheep dog trial shall not be eligible to compete in a maiden class.

21. Any protest against a dog competing must be lodged in writing at the office on the grounds on the day of the competition and be accompanied by a fee of £1, which will be retained if the protest be deemed, on due consideration, unfounded or frivolous. Such protest shall be dealt with by the trial committee which will within fourteen days give its decision, which shall be final.

22. An owner may appoint a nominee to work his dog, or dogs in the trials, but the owner shall assume full responsibility during such trials.

23. The trial steward will at the competitor's request explain the course before the commencement of the trials.

24. If any dog fails at first attempt to sight his sheep the competitor will be allowed to re-call his dog and recast once.

25. Competitors, when working their dogs, will stand within a circle 20 feet diameter, and must remain there until sheep are through the race unless time limit has expired or the trial has otherwise terminated.

26. When penning sheep, competitors must keep one hand on head of gate or hold on to rope attached to the gate and close the gate when sheep are penned.

27. In any final trial or championship event, the judge may alter the course or vary the test for dogs selected to compete, and the prizes shall be awarded to those dogs gaining highest aggregate number points in both trials.

28. The same sheep shall not be used more than once during the course of the trials, provided that sheep used in ordinary trials may be used for the farmers' class if necessary.

29. The worker shall not be permitted to use any stick or other object for the purpose of directing the dog if such stick or object exceeds 2 feet in length.

30. Any person or persons refusing to conform with these rules may be disqualified from competing at any further trial.

31. Any competitor who is not on the grounds in time to compete in any trial for which he has entered shall not be allowed to compete in that event.

32. If, in the opinion of the trial committee, there are more entries than can be handled in two days, the committee shall have the right to limit entries to two to each competitor in each or any one class in which case the competitor shall have the right to nominate those dogs he wishes to work. The trial committee shall be empowered to take such other action as it may deem necessary in order that the programme can be completed within the time available.

33. In the event of any question or situation arising not provided for in these rules, the matter in question will be dealt with by the trial committee and its decision shall be final.

Farmers Class.—The general rules governing these trials shall apply to the farmers' class with the following exceptions:—

(a) Twelve (12) sheep will be allotted to each dog. Six (6) being raddled from nose to back of poll.

(b) Each dog will take charge of sheep and bring them from releasing yard to the worker. The dog will then yard and draft them through a race into two (2) lots. After this has been completed, the dog will again bring the sheep together and put them in a yard which will have a closed back.

(c) The worker may give the dog such assistance as he may desire, provided always that the extent to which the dog is assisted by the worker shall be taken into consideration by the judge, who may deduct points for this in making his award. The worker must not handle the sheep, except when in the race and forcing yard and must not use a stick or attempt to draft the sheep, except at the drafting gate.

(d) Dogs must bark when called upon by the owners, but not otherwise.

(e) No muzzle will be allowed.

(f) Any dog that bites will be disqualified.

(g) The maximum time allowed for each dog shall be 15 minutes from the ringing of the bell, after the sheep have been turned out.

(h) Points.—The points shall be as follows:—

Cast	10
Steadiness outside yard .. .	10
Under command .. .	20
Command of Sheep .. .	10
Yarding .. .	10
Drafting through race (three points to be deducted for each wrongly drafted sheep) .. .	30
Final shedding. .. .	10
Style of working .. .	10
	—

Total .. . 110

Western Mail 17 August 1939

1939

NORTHAM TRIALS.

70 Nominations.

The events comprise the "Farmers' Trial" which will commence at 9 a.m. on the Tuesday morning and puppy, maiden and open events which will follow in that order. The open event should take place on Wednesday afternoon.

Particular interest should be taken in these trials, as the five (5) leading dogs will be eligible to compete for the State championship award which will be made at the Perth Royal Show and for which the judge will be Mr. J. Moses, of Victoria.

1939 elimination trial
Northam
Championship at
Claremont

Western Mail 7 September 1939

SHEEP DOGS AT THE ROYAL.**Attractive Championship Field.**

Last year, after a lapse of some years, sheepdogs were reintroduced at the Royal Show, where the West Australian championship was held.

The dogs which will compete at the Show include Lass, owned by Mr. N. Sagers, of Mingenew, who secured first place in the Farmers' Trial with 94 points; Trelawney Dick, owned by Mr. J. C. Bushell, of York, who was runner-up in last year's championship and also secured 94 points; Linda, belonging to Mr. D. S. Horwood, of Swan View, which won the open championship at Northam in 1937 and this year repeated the performance, scoring 98 points; Jean, Mr. E. G. Riley's dog, which won the State championship last year, scored 91 points in the Farmers' Trial at Northam, and 96 points in the open; and Ghyp, belonging to Mr. W. C. Ball, of Kojonup, which scored 92 points and was third in the open trial.

It is believed that it would be very difficult to find in Australia in one competition five dogs of such outstanding merit. The competition will be judged by Mr. J. Moses, of Kentdale, Victoria, a recognised authority on working sheep dogs. The winner will receive a special prize of £10 provided by Westralian Farmers, Ltd., and a challenge cup presented by Mr. A. L. B. Lefroy, treasurer of the W.A. Working Sheep Dog Association. The reserve champion will receive £5 from the Royal Agricultural Society.

The five dogs will compete on the Tuesday of the show, and the two gaining the most points will compete again during the luncheon adjournment on Wednesday, the champion being the one with the greatest aggregate of points. As the dogs must be really consistent to compete through the Northam Trial and the two days of the Show, the championship is not easily won.

Western Mail 31 August 1939

SHEEP DOG TRIALS.**CHAMPION DEFEATED.****Linda Wins Open Event.**

(From Our Special Representative.)

NORTHAM, Aug. 23.—A close contest between two outstanding bitches—Mr. D. S. Horwood's Linda and Mr. E. G. Riley's Jean—marked the open event at the West Australian Working Sheep Dog Association's annual field trials, which were concluded today. Jean, who won last year, was the faster of the two in penning her sheep, but the contest is not always to the swiftest in sheep dog trials, and the judge (Mr. R. Wall) gave first place to Linda with 98 points—only two less than the maximum—Jean coming second with 96 points.

Details of the results are as follows:—

OPEN TRIAL.—D. S. Horwood's Linda, 98 points, time 12min. 7sec.; 1. E. G. Riley's Jean, 96, 6min. 16sec.; 2. W. C. Ball's Ghyp, 92, 12min. 46sec.; 3. E. Jones's Dawn, 87, 9min. 30sec.; W. E. Fowler's Don, 82, 10min. 29sec.

PUPPIES' TRIAL.—E. Jones's Tinker, 85, 10min. 12sec.; 1. E. G. Riley's Windbag, 83, 10min. 39sec.; 2. J. C. Bushell's Trelawney Bonitia, 80, 8min. 5sec.; 3.

MAIDEN TRIAL.—J. C. Bushell's Trelawney Dick, 94, 10min. 33sec.; 1. E. Jones's Dawn, 93, 8min. 8sec.; 2. E. Jones's Tinker, 87, 12min. 47sec.; 3.

FARMERS' TRIAL.—N. Sagers's Lass, 94, 9min. 30sec.; 1. E. G. Riley's Jean, 91, 4min. 15sec.; 2. W. E. Fowler's Highland Mauser, 86, 11min. 25sec.; 3.

There was an attendance of about 400 this afternoon.

1939 State Champion: E.G.Riley's Jean

The West Australian | Thursday 5 October 1939

SHEEP DOG TRIALS.**Jean Wins Final.**

Judge.—Mr. J. Moses (Vic.)

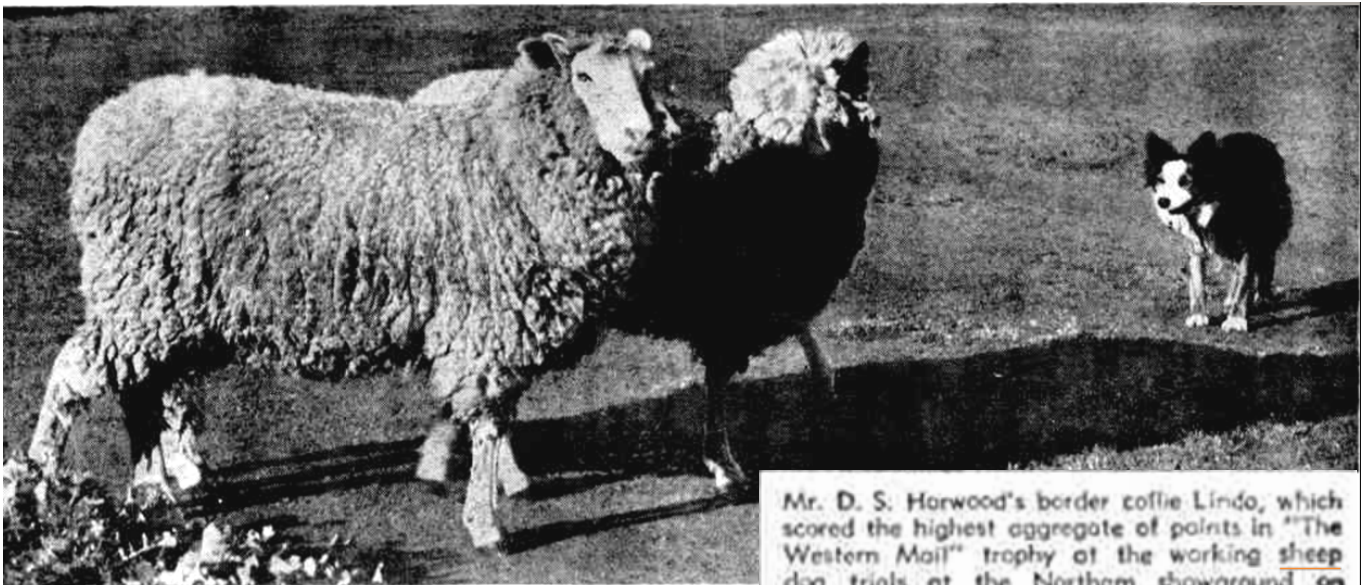
For the second year in succession the State championship sheep dog field trial at the Royal Show was won yesterday by Mr. E. Riley's Jean, who defeated Mr. W. C. Ball's Gyp by earning a total of 178 points to 159. The eliminating trial was held on Tuesday and the two



A line-up of dog trial competitors at the Northam Show in August 1939.

Western Mail 31 August 1939

SHEEP DOG TRIALS AT NORTHAM.



Mr. D. S. Horwood's border collie Linda, which scored the highest aggregate of points in "The Western Mail" trophy at the working sheep dog trials at the Northam showground on August 22 and 23. The trials were conducted by the West Australian Working Sheep Dog Association.



Messrs. D. S. Horwood (left) and G. C. Curlewis, secretary of the Northam Agricultural Society, watching the trials.

Western Mail (Perth, WA) : Thursday 14 March 1940



ANNUAL MEETING.

A Successful Year.

Making his annual report of the Association's activities at the annual general meeting of the W.A. Working Sheep Dog Association on March 6, the president (Mr. J. C. Bushell) said:—"The membership can be considered satisfactory as this now stands at 38, as compared with 30 in 1938, being an increase of 8 during the past 12 months.

The finances of the association at the end of the year under review showed a surplus of £11/6/7, as compared with a surplus for the preceding year of £5/8/10. This increase is due partly to a curtailment of certain expenditure and partly to a slight increase in revenue from additional members' subscriptions.

Field Trials.

"As previously the Annual Field Trials were held at Northam by courtesy and with the assistance of the Northam Agricultural Society, and an excellent re-

"I would also like to take this opportunity of urging members to do their best to patronise Country Agricultural Societies which have Sheep Dog Trials on their programmes.

Minutes of Meeting.

Present: Mr. J. C. Bushell—in the chair—Messrs. B. Ball, W. C. Ball, H. F. Ritchie, J. Rae, D. S. Horwood and A. Glover.

Apologies were received from Messrs. E. Jones, R. Jones, N. Saggars and H. Meehan.

1940 Trials.

Mr. Bushell reported that he had made extensive inquiries and very thoroughly considered the question of holding 1940 Trials in Perth and he was now of the opinion that it would be impossible to do this, chiefly on the score of expense. It was, therefore, decided to abandon this proposal in the meantime.

investigating
running
trials in
Perth

It was further resolved:—

"That it be a recommendation to the committee that the Trials this year be held at Northam provided the Northam Agricultural Society is prepared to co-operate as in the past and that the question of holding Trials at different country centres in future years be considered."

General Business.

The president's report and yearly statement of accounts were submitted to the meeting and adopted on the motion of Mr. B. Ball, seconded by Mr. Horwood.

The election of office bearers then took place which resulted as follows:—

Patron: It was resolved "That Mr. R. Carroll be asked to accept this position."

President: Mr. J. C. Bushell.

Vice-presidents: Messrs. B. Ball and D. S. Horwood.

Treasurer: Mr. A. L. B. Lefroy.

Committee: Messrs. E. G. Riley, H. F. Ritchie, J. Rae, A. Glover and W. C. Eall.

Stud Book.

Letter was received from Mr. H. Meehan suggesting that the question of the association compiling a Stud Book or instituting a system and recording dogs be considered. The matter was discussed at length, when it was resolved to refer this matter to the committee, the following suggestions being noted:—

(a) A foundation section be formed and dogs to be admitted to this section only to be accepted at the discretion of the committee.

(b) That from a date to be fixed, no dogs to be accepted for registration, unless the progeny of dogs already registered.

(c) If dogs are not registered prior to sale, the purchaser to be enabled to register after he becomes a member.

(d) A registration fee of 5/ be charged for each dog.

(e) The Royal Agricultural Society might take all fees and do the necessary work.

(f) Dogs which are registered in other stud books might be accepted by this association on payment of half fee.

A letter was received from Mr. E. Jones suggesting for the consideration of the committee that in the 1940 trials first and second prize winners in the puppy class be eligible for the open class and also for the championship prize, provided that 8) points were scored. The matter was discussed at length, when it was resolved on the motion of Mr. Horwood, seconded by Mr. Rae:—"That it

be a recommendation to the committee that the first prize winning dog in the puppy class be eligible to compete in the open class."

Western Mail Thursday 6 June 1940

1940

discussion
on
registration

COMMITTEE MEETING HELD.

A COMMITTEE meeting of the W.A. Working Sheep Dog Association was held on May 16. Details of the 1940 Trials were discussed and it was resolved that the trials will be held at Northam

Order of Competition.

It was resolved that when entries are received, a draw for positions will be made at the office. Competitors, in submitting their entries may indicate the order in which they wish their dogs to run. It was resolved that all trials will be conducted in the order printed in the catalogue. Obstacles for all trials will be the same as last year.

First, second and third prize winners in the Open Class and the first and second prize winners in the Maiden Class shall be eligible to compete in the W.A. Championship trial at the 1940 Royal Show.

It was further resolved that the first prize winner in the Puppy Class be eligible for the Open Class on payment of an additional entry fee.

General.

The question of establishing a register of dogs was then discussed when the following was agreed to:—

(1) That members be circularised asking how many dogs they would register immediately and what they anticipated they would register yearly.

(2) That no action be taken with regard to recording of litters.

(3) That the suggestion outlined by the secretary with regard to the layout of entry forms and registration certificates be adopted.

(4) That all registrations be subject to the scrutiny of a sub-committee consisting of Messrs. J. C. Bushell and D. S. Horwood.

(5) That registrations be accepted from financial members of the association only.

(6) That dogs to be eligible for the register need not necessarily be pure bred.

(7) That the register be named "A Register of Working Sheep Dogs."

(8) That it be compulsory for all members to register a stud prefix to be attached to the name of all dogs bred by them.

(9) That a registration fee of 5/ per dog be charged and that imported dogs registered in recognised Stud Books be admitted at half (½) rates.

(10) That for the present registrations will be accepted from either the owner or the breeder.

(11) That the Royal Agricultural Society be asked to meet the cost of the necessary printing and that in return it retain all entry fees.

(12) That any further details be left in the hands of the president and the secretary to arrange.

Western Mail (Perth, WA) Thursday 27 June 1940

SHEEP DOG TRIALS.

Northam Fixture Cancelled.

IT was announced by the secretary of the W.A. Working Sheep Dog Association (Mr. C. W. May) that the sheep dog trials which were to take place at Northam in August next have now been cancelled.

It has also been decided to suspend, for the time being, the proposed scheme for the registration of sheep dogs in this State.

registration of
sheepdogs
postponed

Western Mail (Perth, WA) Thursday 19 April 1945

Show Trials Mooted.

THE Royal Agricultural Society has been approached with a request that the WA Working Sheep Dog Association be permitted to hold trials at the show grounds on the Friday of Royal Show week.

The association, which had gone into recess during the war years, has been revived. At a recent meeting in Perth the following office-bearers were elected: Patron, Mr C. P. Smith; president, Mr J. C. Bushell; vice-presidents, Messrs B. Ball and A. Currie; treasurer, Mr A. L. B. Lefroy; committee, Messrs. A. Glover, D. S. Horwood, F. P. Atwell, W. Ball, W. G. Burgess, W. E. Fowler, J. Walsh, E. T. Loton and E. Jones.

It was decided to place a limit on the number of entries allowable from any one member. The arrangement of the programme and prize list was left in the hands of the committee. "The Western Mail" was again appointed the official organ of the association.

revival of
trialing
after the
war

Western Mail Thursday 30 August 1945

SHEEPDOG TRIALS.

Abandoned This Year.

There will be no sheepdog trials at the Royal Show to be held in November.

This was decided at a recent meeting of the executive committee of the WA Working Sheep Dog Association when a number of letters from members were read. Some favoured holding the trials, but the general view was that they should be postponed to next year. The suggestion was made that the trials be held in 1946 at a country centre.

It was resolved—"That the idea of holding trials this year be abandoned and that members be advised that the trials will be held in 1946 at a venue to be decided on by the committee early next year."

In response to a letter from the Canberra Kennel Club it was agreed that a reciprocal agreement be entered into with governing bodies in other States whereby the parties would recognise each other as such; also the panels of judges and rules of disqualifications.

Western Mail Thursday 15 August 1946

1946 TRIALS

AFTER being in recess for the duration of the war, the W.A. Working Sheep Dog Association will be conducting its first Field Trials since 1939 this month.

By courtesy of the Northam Agricultural Society, the trials will be held on the Northam Showground on Wednesday, August 21, and a large crowd is expected. Classes have been provided for Open, Maiden, Puppy and Farmers Trials and the first classes will be tried at 9 a.m.

The leading dogs from the trials at Northam will then be eligible to compete for the State Championship to be conducted at the Royal Show to be held October 8 to 11.

Further particulars may be obtained from the acting secretary of the W.A. Working Sheep Dog Association (Mr. J. B. Marshall), 18 William-street, Perth.

The West Australian Friday 23 August 1946

The annual meeting of the association was held at Northam on Tuesday night when the following officials were elected: Patron, Mr. C. P. Smith; president, Mr. J. C. Bushell; vice-presidents, Messrs. B. Ball and A. Currie; treasurer, Mr. A. L. B. Lefroy; committee, Messrs. A. Glover, D. S. Horwood, F. P. Atwell, W. Ball, W. G. Burges, Justin Walsh, E. T. Loton, E. Jones, H. L. Watson.

It was decided to recommend to the committee that next year's trials be held at Wagin and to consider increasing the prize money and entrance fees. A vote of thanks was accorded the Northam Agricultural Society's officials for their assistance.

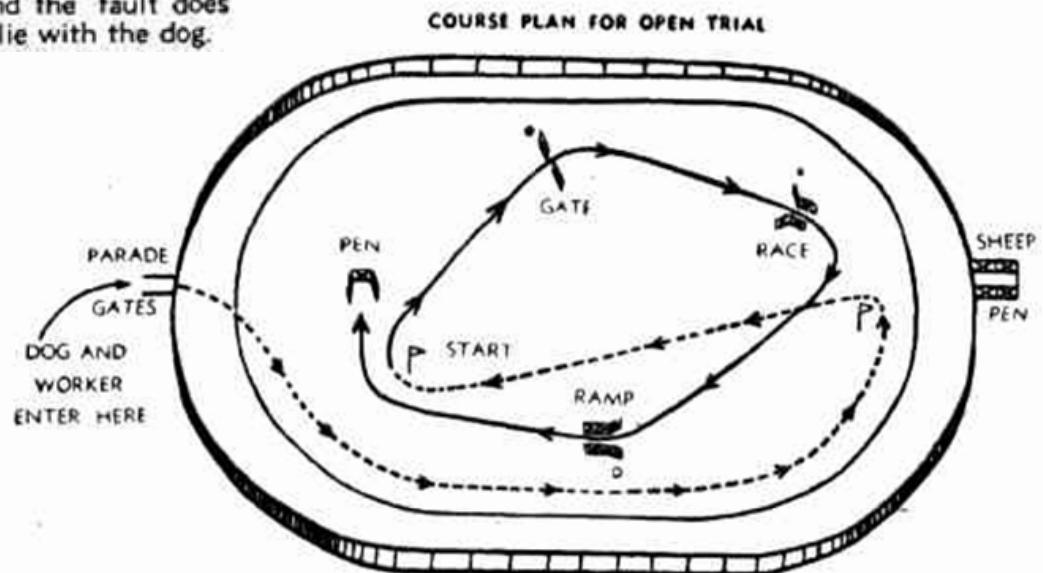
An old hand offers some words of advice to beginners in

Sheep Dog Trials

by A. Currie

THERE may be some young competitors in the sheep dog trials to be held at Northam on August 21 and perhaps these few hints will be helpful to them. It is very disconcerting for a beginner to find that the dog which worked perfectly at home lets him down badly at the trials, yet this happens quite frequently—and the fault does not always lie with the dog.

new trial course



TRIAL COURSE: Course and obstacles which will be used in the Open Trials at Northam and at the Royal Show. This course, with a re-arrangement of obstacles, will also be used for Puppy, Maiden and Farmers' Trials.

Each competitor is allowed 15 minutes to complete the course and whether he takes the full 15 minutes or does the course in half that time has no bearing whatever on the number of points gained. Too often in Western Australia the competitors have tried to make a race of the course from start to finish and I must confess to having been one of the worst offenders.

It was only after watching trials in the Eastern States and seeing some of the leading competitors spend as much as 10 minutes over the first obstacle that I realised the foolishness of making a speed test of the job.

Watch the Old Hands

It is helpful to carefully observe the older competitors at work and I have learnt much by watching such well-known and highly experienced men as Bob Wall, Ted Jones, George Bagshaw, Ben and Bill Ball, Ted Horwood, and many others whose names I cannot recall.

Western Mail 29 August 1946

The West Australian Friday 23 August 1946

Some impressions of the first post-war Sheep Dog Trial at Northam

by Martingale

Resuming
after the
war

AFTER a six-year break occasioned by the war years, the W.A. Working Sheep Dog Association resumed activities with a Trial programme staged on the Northam Showground on August 21. A wintry sunshine the State. A new competitor in Mr. H. Childs of Cranbrook carried off the honours in the Open Trial with a particularly stylish little Border Collie bitch named Kit.

Jean's daughter Florrie () scored 82 points being only one mark behind the first prize winner.

THE third place in the open trials went to J. J. Currie's South Australian importation, Colonist. By far the biggest dog in the trial, Colonist is a large-framed, broad-skulled animal mostly white in colour. He

Much interest was shown in the reappearance in this event of the old champion, E. G. Riley's Jean and I know that Ernie was particularly keen to give the old dog another opportunity to put up one of the matchless performances for which she was famous six or seven years ago. Jean who is rising 13 was particularly unfortunate in drawing a pen of sheep which included a truculent, horned fellow who looked to be a ram stag. He was full of fight and repeatedly charged Jean who did not possess sufficient forcefulness to control him. Mrs. Riley

The new course introduced at this meeting to bring the Trials into conformity with Eastern States courses included the 6-foot gap between two hurdles as the first obstacle followed by a race, a ramp or bridge, with the pen as the final obstacle. The ramp consisted of two 6-foot hurdles leading to a cleated platform rising to a height of about 18 inches with a flat portion in the centre and sloping to ground level at the far side but it was unfortunate that not one sheep was worked through the ramp in the trials.

New
course

SHEEPDOG TRIALS REVIVAL AT NORTHAM.

NORTHAM, Aug 22.—Revived after having been in abeyance for the war years, the annual sheepdog trials conducted by the West Australian Working Sheepdog Association were held on the Northam showgrounds yesterday and

Perhaps the most spectacular performance of the day was that put up by Spider, a dog bred by Mr. J. C. Bushell, of Trelawney, Northam, in the farmers' open trial. In this class the dog had to yard 12 sheep, assist his director in drafting them equally into two pens, take them out and finally put them in another nearby yard. Spider achieved this task in six minutes 35 seconds and scored 97 points out of a possible 100.

Popular sympathy was felt for the aged champion Jean owned by Mr. E. G. Riley, which failed in the open event probably through age, and maybe ill-luck in having three difficult sheep to handle. The second and third place-getters in the open class and the first and second in the maiden will be eligible to compete in the championship at the Royal Show in October.

The judges were: Maiden and open classes, Mr. Bob Wall; puppy and farmers' classes, Mr. A. Currie.

Results: Puppy class, E. G. Riley's Robin Adair, 75 points, 1; J. C. Bushell's Merah, 71 pts., 2; W. E. Fowler's Blue, 30, 3. Maiden: E. G. Riley's Florrie, 85, 1; W. E. Fowler's Bonnie, 63, 2; E. G. Riley's Robin Adair, 58, 3. Open class: H. C. Childs's Kit, 83, 1; E. G. Riley's Florrie, 82, 2; J. J. Currie's Colonist, 70, 3. Farmers' trial: J. C. Bushell's Trelawney Spider, 97, 1; E. G. Riley's Jean, 91, 2; W. E. Fowler's Bonnie, 81, 3.

The West Australian | 10 October 1946

THE ROYAL SHOW.

E. G. Riley's Florrie, in the words of the judge (Mr. D. S. Horwood) "did a beautiful job" and won comfortably with 94 points from Mr. Child's Kit with 60 points, their respective totals on the two days being—Florrie, 174 points and Kit 132 points.

1946 State Champion: E.G.Riley's Florrie

Trial
goes to
Wagin

Western Mail Thursday 4 September 1947

Wagin Sheep Dog Trials

by MARTINGALE

AT last year's annual meeting of the W.A. Working Sheep Dog Association it was decided to stage the 1947 trials at Wagin instead of at Northam which has always been the venue in past years. The innovation was a popular one, and stimulated by the boundless enthusiasm of Mr. Ben Ball, who has long been one of the Association's stalwarts, local dog owners and the general public of Wagin united in giving a gratifying measure of support. Many entries were received and the standard of work throughout showed a pleasing improvement on that of the first post-war trial held a year ago.

To Mr. R. Riseborough much credit is due for providing over 200 prime shorn wethers for use in the trials. In the opinion of many veterans of the trial courses they were the best and most even lot of sheep that have ever been fielded.

SCALE OF POINTS PUPPY AND MAIDEN CLASSES

	Pts.
Cost	12
Approach	5
Bringing	8
Command	20
Obstacles	25
General Work, including force, steadiness, and control of sheep	30
Total	100



Mr. W. C. Ball with Flossie, which won the Open Trial with the score of 99 points.

THE open trial which took place on the second day of the meeting attracted 20 starters. Ted Jones was again responsible for the judging and I would like to express my appreciation of his helpfulness and courtesy. He was at all times ready to explain why competitors lost points and the two associate judges, Ross Rutherford and Justin Walsh, found this instruction most helpful. I, too, learnt many of the finer points of trial judging and was deeply appreciative.

placings and points for the 1947 Open Class were: W. C. Ball's Flossie, 99; E. G. Riley's Florrie, 96; E. A. Ewen's Melring, 88; H. C. Child's Jock, 80; and E. G. Riley's Bonny Jean, 75.

At the annual meeting of the association, which was held after the first day's trials on August 26, Mr. Ben Ball was elected to the presidency of the W.A. Working Sheep Dog Association in succession to Mr. J. C. Bushell, who stated that he was not eligible for re-election.

Main Event

The event was opened by E. G. Riley's Jean, the former State champion who is now 14 years old. Poor old Jean's hearing and eyesight are now impaired too greatly for her to be under perfect control in distant work. She lacks speed, but at the obstacles could still show the brilliant form which earned her the plaudits of the crowd in days gone by. She had the honour of being the first dog in the State to put her sheep over the ramp, an obstacle introduced last year to bring this State in conformity with the standard Australian and New Zealand trial courses. The ramp was added to the gate, race and pen at last year's Northam trials and was used again at the State championships at Claremont, but in no case did a dog succeed in putting sheep through it. The obstacle consists of a cleated platform sloping upward to a flat portion in the centre with another platform sloping down to ground level on the far side.

Jean's daughter, Florrie, the present State champion, put up a beautiful performance in the Open to gain 96 points. Her cast was almost per-

No other dog in the competition looked like beating her until Bill Ball's Flossie took the field to give what was probably the finest exhibition that any sheep dog enthusiast present had ever seen. Flossie, an all-black Border collie bitch also lost a point for over-running an otherwise perfect cast, then went on to win first prize with a faultless performance that gave her the amazing total of 99 points.

cont. from pg 43

1947

Western Mail Thursday 4 September 1947

Wagin Sheep Dog Trials

by MARTINGALE

Farmers' Trial

THIS event, which offered excellent scope for dogs accustomed to working farmers' flocks, carried a first prize of £5, second £2, third £1, fourth 10/, and fifth 5/. In addition the first prize winner received the W.A. Beck trophy previously referred to.

Two lots of 10 sheep were released separately and the dog was called upon to cast and bring each lot and then to join them and pen them in a yard.

Half of the sheep were raddle-marked on the head and the owner, with the dog's assistance, was required to put them through a race and draft them into separate pens for marked and unmarked sheep. After this the flock was reunited and had to be penned in a small yard to complete the course.

Little Merah secured the splendid total of 98 points in this event, losing only two points on her casting

farmers trial



Mr. J. C. Bushell's Merah, which won first prize in both the Maiden and Farmers' Trials.

Apart from Merah and Spider, there was only one other kelpie present at the meeting so, with two firsts and a second, Jack Bushell has every reason to be proud of these worthy representatives of the Australian breed. Unfortunately much of the Farmers' Trial had to be conducted in semi-darkness and the luck of the draw may have been against the later competitors.

FARMERS' CLASS

Cast	10
Steadiness outside yard	10
Under Command	20
Command of Sheep	10
Yarding	10
Drafting through Race (three points to be deducted for each wrongly drafted sheep)	30
Style of Working	10
Total	100

The West Australian | Saturday 30 August 1947

Eager to start in the Wagin sheepdog trials held on Tuesday and Wednesday, this team from Gingin arrives at the ground in the care of their owner, Mr. E. G. Riley. There were 54 competitors in the three sections.



The West Australian Thursday 9 October 1947

THE ROYAL SHOW.

CHAMPION SHEEP DOG

First State Award To Kelpie Breed

The Sheep Dog Championship of Western Australia changed hands yesterday when Mr. E. G. Riley's Florrie, the 1946 champion, was defeated by Mr. J. C. Bushell's Kelpie, Trelawney Merah, which put up an excellent performance under difficult conditions.

1947 State Champion: J.C.Bushell's Trelawney Merah

Western Mail Thursday 1 April 1948

THE PASSING PARADE

by MARTINGALE

DURING recent years there has been a marked growth of interest in sheep dog trials in this State with a corresponding improvement in skill both on the part of the dogs and their trainers. This year's Annual Trials under the auspices of the W.A. Working Sheep Dog Association will be held at Northam on August 24 and 25, and many owners are already preparing their entries for this important fixture. The Annual Trials provide the eliminating contests for the State Sheep Dog Championships which will be decided at the Perth Royal Show.

New
Novice
Class

A new Novice Class will be added to the programme of events at this year's Northam trials. Entries will be restricted to dogs and men who have not won a first prize at previous trials and the worker must be the owner of the dog. The innovation resulted from a suggestion made last year by Mr. Ted Jones who offered £5 toward the prize-money. Awards of £5 first prize, £2 second and £1 will be made in this class.

Several alterations to the Trial Rules were made at the Association's committee meeting held on March 18. The existing rule concerning the presence of bitches in season was strengthened and the Trial Committee is empowered to order the immediate removal of such animals from the ground. Penalty for non-compliance is a fine of up to £5.

The rule concerning the circle in which the worker stands has been amended to make it read "12 feet" in diameter.

In the Farmers' Trials the number of sheep to be used will be 20 instead of 12, and dogs will be permitted to bark.

The judges appointed for the 1948 season will be Mr. E. Jones for the Open Trial and Messrs. R. R. Rutherford and J. R. Walsh acting conjointly for all other classes at the Annual Trials. Mr. D. S. Horwood will judge the State Championships at the Royal Show.

The West Australian Thursday 7 October 1948

SHEEP-DOG'S SKILL

Winner of three first prizes—in the puppy, maiden and novice events—at the Northam Field Trials last August, Mr. A. H. Glover's "wonder-pup," Rags, gained the West Australian Working Sheep Dog Championship at Claremont yesterday with 167 out of 200 points for her two runs in the championship trials.

1948
Northam
&
Claremont

Rags, whose ancestry includes both Border Collie and kelpie blood, is the youngest dog to gain the championship award. Being under 12 months, she is still officially a puppy.

1948 State Champion: A.H.Glover's Rags

The West Australian
Wednesday 24 August 1949**SHEEP DOG TRIALS**

WAGIN, Aug. 23: The annual elimination State sheep dogs trials began at the Wagin show-ground today. Over 90 entries were received.

1949
Wagin
&
Claremont

Thursday 25 August 1949

WAGIN: Winners of the chief events so far decided in the Wagin sheep dog trials are: Maiden dog or bitch class, P. T. Atwell's Flirt. Novice class, P. Walker's Bess. Farmers' class, L. Ball's Teddy. Open event: A. H. Glover's Rags (96 points), 1; E. H. Ewen's Melring (88), 2; G. Ball's Snowy (75), 3.

ROYAL SHOW Thursday 6 October 1949

RAGS WINS AGAIN**Sheep Dog Trials
Please Crowd**

Rags, Mr. A. H. Glover's little black-coated sheep dog, held the big crowd spellbound yesterday as she gained the State sheep dog championship for the second successive year.

1949 State Champion: A.H.Glover's Rags

Western Mail Thursday 15 June 1950

1950

The 1950 Sheep Dog Trials

AT the committee meeting of the W.A. Working Sheep Dog Association held on May 31, it was decided that the 1950 Field Trials will be held on the Northam Showground on Tuesday and Wednesday, August 22 and 23. The Open Class will be judged by Mr. R. Wall and Mr. R. R. Rutherford will adjudicate in the other classes with Mr. Justin Walsh as emergency judge for all events.

Owing to the difficulties experienced in dealing with a heavy entry list last year it was decided to eliminate the Novice Class from this year's trials. The rule regarding the Trial Committee's power to restrict entries to one dog per person in each class will also be applied this year if conditions make it necessary. Prize money, schedules, entry fees, etc. will be the same as in the 1949 trials.

Mr. Woods, of the Beverley Agricultural Society, appeared before the committee by invitation and requested members to consider holding the Association's Annual Trials at Beverley as well as at Northam and Wagin. It was decided that members of the committee would make an inspection of the Beverley Showground and facilities so that the proposal could be discussed at the annual general meeting on August 22.

limit novice dogs

Western Mail Thursday 3 August 1950

by MARTINGALE

OWNERS of sheep dogs are reminded that the annual field trials of the W.A. Working Sheep Dog Association will be held on the Northam showground on Tuesday and Wednesday, August 22 and 23. Other trials under the auspices of the Beverley Agricultural Society will be held at Beverley on August 19, and it should be noted that wins at the Beverley trials will not affect the eligibility of dogs entered for the "Maiden" event at the current Northam trials.

Western Mail Thursday 31 August 1950

The main event of the 1950 sheep dog trials at Northam resulted in yet another victory for the champion

RAGS DOES IT AGAIN

by MARTINGALE

WORKING almost faultlessly for a score only five short of the possible 100, Mr. A. H. Glover's entry, Rags, gained first place in the Open Trial at Northam on August 23 when the West Australian Working Sheep Dog Association conducted its annual field trials under excellent conditions. This gives Rags her passport to the Claremont Showground where she is now eligible to compete once again for the State Championship which she has held for the past two years.



The winner, Rags, putting his sheep into the pen.

Sheep Dog Trials At Northam

The winner, Rags, putting his sheep into the pen.

1950
Northam
&
Claremont

Sheep Dog Trials At Northam



Mr. J. K. Martin, newly-appointed president of the W.A. Working Sheep Dog Association discusses the trials with Mr. J. R. Walsh who judged all the events.



Mr F.W.Knapp with Ballimena Castrol second place-getter in the farmers' trial

The West Australian | Wednesday 4 October 1950

1950

RAGS MISSES "HAT TRICK" IN SHEEPDOG TRIALS

Rags, State champion sheepdog for the past two years, gave a disappointing display in the first round of the 1950 championship field trials at the Claremont Showground yesterday.

Her owner, Mr. A. H. Glover, of Mooliabeenee, who had had high hopes of taking the blue riband for the third time, grinned ruefully as he came off the course and said: "Well, I've watched other dogs disappoint their owners in past years so I can't grumble now that it's my turn."

1950 elimination
trial
Northam &
Championship
Claremont

The West Australian | Thursday 5 October 1950

IMPORTED BORDER COLLIE WINS SHEEPDOG HONOURS

The State sheepdog championship changed hands at the Claremont Showground yesterday when Mr. E. Jones's imported border collie, Quentin Boss, took the Blue Riband from the 1948 and 1949 champion, Rags, by the narrow margin of one point.

The Daily News | Wednesday 4 October 1950

Quentin Boss Takes Title

State champion sheep dog
Rags failed by one point today

The 1950 championship was won by Mr. E. Jones' dog Quentin Boss with a total of 157 points. Runner-up was Rags with 156 points.

Fortunes see-sawed amazingly during the trial and the victory by Quentin Boss was the climax of a series of surprises in which the dogs amply demonstrated that there are no certainties in sheepdog trials.

GOOD STYLE.

Quentin Boss hurried his approach but brought the sheep down to the worker in good style. At this juncture the sheep made a break for freedom and, in racing to head them off, the dog made a spectacular leap over the water jump, covering a distance which a ring official declared was almost 17ft.

He regained control and put the sheep through the gate, and the race presented little difficulty. After the sheep crossed the ramp the time limit expired. His score of 76 gave him an aggregate of 157.

The Daily News

SHEEP DOG TAKES 16ft. WATER JUMP IN HIS STRIDE

Quentin Boss, a sheepdog entered in today's trials by Mr. E. Jones, of York, gave an off-the-programme display of jumping that astonished spectators at the Royal Show today.

While running very fast to catch three sheep, he came face to face with the water-jump—a hard test for horses.

Without hesitation he cleared the obstacle—a 3ft. fence topped by 6in. "hedge," in front of a sheet of water more than 16ft. wide.

His jump carried him over the water and a patch of gravel extending about 2ft. beyond it.

When his jump was measured by a ring official it was found that the dog had cleared almost 17ft.

"It was one of the most prodigious leaps I've ever seen a dog accomplish—especially as it seemed to come as a surprise to him," said an official.

1950 State Champion: E. Jones' Quentin Boss

Western Mail | Thursday 20 September 1951

Vying for Supremacy

THE holding of the annual field trials for working sheep-dogs at the Royal Showgrounds on Friday and Saturday of next week should attract a considerable following to the arena.

The trials have not been conducted in the metropolitan area recently, and among the canines competing will be Mr. E. Jones's Quentin Boss, last year's championship winner; Mr. A. Glover's Rags, champion in 1948 and 1949, and probably Mr. J. Bushell's 1947 champion, Merah.

Another competitor worth watching should be Jess. At the Cootamundra (N.S.W.) trials recently Jess took first place with 94 points. She is a daughter of Merah. Also on trial will be Spider II, a son of Merah, to be worked by Mr. Tom Barnett. Messrs. Ernie Riley and Len Ball have also entered dogs.

Entries have been coming in well, the W.A. Working Sheep Dog Association reports, and they close on Friday, September 21.

Western Mail (I) | Thursday 14 June 1951

Committee busy with arrangements for the coming

SHEEP DOG TRIALS

BY conducting its annual elimination trials a week or so prior to the Royal Show this year, the W.A. Working Sheep Dog Association hopes to secure the services of an Eastern States judge for both the trials and the State championship final, which is to be contested at the Royal Show as usual.

1951 elimination trial also at Claremont

These trials are to be conducted in the metropolitan area this year for the first time. Usually they have been held in August, but the committee of the association feels that, unless one judge could cover both the elimination stages and the finals, the cost of the visit would be unwarranted, and it resolved at its last meeting to take steps for the reservation of a ground—possibly the Royal Showground—for two days late in September.

This is the first year in which the West Australian Working Sheepdog Association has held its annual trials in the metropolitan area. In previous years they have been staged at Northam or Wagin.

Wethers Bought

To hold the trials in Perth, the association purchased a line of 300 large-framed wethers at a cost of £1,000 and transported them from Dowerin by motor trucks.

Mr. James Batson, of Portland, Victoria, is judging all events at the annual field trials and will also adjudicate at the championships. He has judged at many of the leading meetings in Australia.

sheep a big expense

VETERAN TRAINER SCORES AGAIN

A veteran sheepdog trainer, worker and judge, Mr. E. Jones, scored another victory at the Claremont Showground yesterday when his young kelpie, Red Johnny, gained first place in the Maiden Trial with 81 points out of a possible 100.

Red Johnny is now qualified to compete in the 1951 State Championship Trials to be held at next week's Royal Show.

Mr. Jones, who is the owner of the present State champion sheepdog, Quentin Boss, has been competing in sheepdog trials for 40 years.

He purchased Red Johnny as a pup from Victoria. The dog's sire, Johnny, gained first place in the National Sheep Dog Trials at Canberra this year for the fourth successive time.

Sheepdog Trials At Claremont

by MARTINGALE

Martingale, who has attended all the Annual Sheepdog Field Trials in the line of duty since the W.A. Working Sheepdog Association was formed, was invited to cover the annual trials for The Western Mail as usual,

Martingale
(Jack Mallet)
-WAWSDA's
great supporter

Sunday Times

30 September 1951

Show actually began yesterday, with sheep-dog elimination trials. Normally trials are held either at Northam or Wagin, before the championships during Show Week.

About 500 paid to see the trials yesterday.

500 paid to
watch trial

This was the first time in history that the Annual Field Trials conducted by the West Australian Working Sheepdog Association have been held in the metropolitan area. In the

Whether the annual trials will continue to be held at Claremont in future years, still remains to be decided. It certainly involves heavy expenses in transporting sheep and in engaging the necessary labour, but I feel that if the trials were given adequate publicity beforehand it should be possible to attract a worthwhile "gate," as the trials always provoke keen interest. I feel, however, that it was a mistake to hold the trials on the eve of the Royal Show for several reasons. Apart from the fact that the date clashed with that of the football finals, the hurly-burly of Show preparations made the organisation and conducting of the trials doubly difficult.

Championship Trials

OWING to a heavy programme of ring events at this year's Royal Show, it was decided to restrict the contestants in the State championship trials to the four dogs gaining the highest points scores in the Open and Maiden events.

L. Ball's Teddy with 85 points, and E. G. Riley's Florrie with 83, automatically qualified, but there were three dogs with 81 points and it was necessary to eliminate one of these. A re-run was ordered and the dogs gaining the highest aggregate points in the two runs were E. Jones's Dazler (161 points) and Mrs. E. Riley's Riley (157 points).

Election of Officers

AT the annual general meeting held on Friday night,

Mr. J. Martin was unanimously elected for a second presidential term. Messrs. J. C. Bushell and B. Ball were elected as vice-presidents for the forthcoming year.

It was decided that the committee should go ahead with the establishment of a sheepdog stud register on the lines of that now existing in Victoria.

The West Australian Thursday 4 October 1951

Trainer's Success In Sheepdog Trials

The veteran sheepdog breeder and trainer, Mr. E. G. Riley, of Gingin, scored a notable victory in the final round of the State sheepdog championships at the Royal Show yesterday when his entries took first and second places.

His first entry, Florrie, the ten-year-old border collie bitch which won the championship in 1946, scored 90 points which, added to the 76 points gained in her first run on Tuesday, gave her the 1951 title with 166 points. His second string, Riley, gained second place with a total of 159 points.

Florrie now becomes the third sheepdog to have won the State championship twice.

Only two other dogs have held the Blue Riband twice—Florrie's mother Jean (1938-39) and Alton Glover's Rags (1948-49). Her owner and trainer, Ernie Riley of Gingin, is the only man to have held the championship more than twice and with four wins to his credit he is likely to hold that record for a long time.

"QP"

Mrs. Riley's entry, Riley—she worked the dog herself at Wagin two years ago but was content to leave him in the hands of her hubby on this occasion—was

score of 87 points. This gave Riley an aggregate score of 159 for his two runs.

1951 State Champion: E.G.Riley's Florrie

1951
Championship
trial
Claremont

REGISTER FOR SHEEPDOGS

A REGISTER of sheepdogs in W.A. would be set up under rules already drawn up by a sub-committee, it was decided at the annual general meeting of the W.A. Working Sheepdog Association on September 28. The register would be independent of that set up by the newly-formed Canine Association.

The venue for the 1952 sheepdog trials was also discussed. The holding of the trials on the Friday and Saturday before show week this year had created many problems, particularly in the work of the ground staff, and it was suggested that in future they be held at the showgrounds earlier in the year. The date and venue of the 1952 trials were left, finally, to the committee.

The committee was also directed to reconsider the introduction of novice classes at the annual trials, and to discuss the suggestions by this year's judge (Mr. J. Batson, Victoria) regarding the reduction in size of the ring at each obstacle and the use of a more efficient release pen.

sheepdog register for WA

Western Mail (Thursday 12 May 1949

Obituary

M.H. readers of the Great Southern and particularly those interested in sheepdog trials learnt with regret of the sudden death of Mr. W. C. ("Bill") Ball of Merrinup, Kojonup.

Bill hailed from Wedderburn (Victoria) and started his farming career with his uncle, the late W. C. Ball of Glenalbyn, Katanning. Some time after the death of his uncle he leased Glenalbyn where he was able to indulge in one of his pet hobbies—training sheepdogs, for which he had a natural flair and aptitude. The first outstanding dog he produced was Kitchener, a fine upstanding kelpie

confining entries to registered dogs not to apply this year

THE annual sheepdog field trials to be conducted by the W.A. Working Sheep Dog Association would be held on the Wagin showground on August 26 and 27 in collaboration with the Wagin Agricultural Society, the secretary of the association (Mr. J. B. Marshall) said last week.

Dogs that competed in the State championship at the Royal Show had to qualify at Wagin where five dogs were selected. These were the first, second and third prize winners in the open trial and the first and second prize winners in the maiden trial.

At the State championship the five dogs competed on two days and the dog which gained the highest aggregate points was awarded the State championship.

Mr. Marshall said that his association had made a recommendation to the Royal Agricultural Society that consolation events also be held to give the four unsuccessful dogs a second opportunity of competing at the show. If the society agreed, it was anticipated that these events would be held on the Thursday and Friday of Royal Show week at the showground.

It was hoped that the services of an Eastern States judge could be obtained for the Royal Show events but local judges would officiate at Wagin, Mr. Marshall said.

The programme for Wagin would be the same as in previous years—open, maiden, puppy and farmers'. A restriction of one dog per competitor—instead of two as previously—would be placed on entries in the farmers' class.

The prizes would be the same as before and the president (Mr. K. J. Martin) had donated a special prize of ten guineas for the dog which competed in the State championship and gained at least 190 points in the aggregate.

Although there was now a register for sheepdogs and it was the ultimate intention of the association to confine entries in its annual field trials to registered dogs, this would not apply at this year's trials.

Western Mail (Perth, WA : Thursday 18 September 1952

Progress in activities of W.A. Working Sheep-dog Association

Breeding Better Sheep-dogs

"OUR position has been consolidated considerably by the introduction of registration for our sheep-dogs," said the president of the W.A. Working Sheep-dog Association (Mr. K. J. Master) at the association's annual meeting held on August 26.

Continuing, Mr. Martin said that that would enable the association to keep in touch with all the breeders and their dogs. Its policy was to encourage breeding of better dogs with a higher standard of work. Prize money had been almost doubled, and the association looked forward to keen competition.

"At our committee meeting in May," he went on, "it was regrettable that we had to decide against holding our trials this year at Claremont. After a full discussion, we agreed that the expenses incurred were too heavy for our finance. We were pleased to go back to Wagin, as we have such a staunch supporter and worker in our vice president (Mr. Ben Ball). However, I still feel that we should aim at holding our trials in the metropolitan area as it is more central and has greater possibilities.

"One of my earnest hopes for the future of our association, is

Claremont too expensive

that we should set ourselves a target and build our membership up to a thousand. This would be one way of greatly increasing our financial position. I feel sure that this is not such a big undertaking as it sounds, if we all got to work.

"I am very grateful to Mr. Walsh and Mr. Knapp for judging at our elimination trials. We thank these gentlemen very much for their services in a difficult task. It is very pleasing that we have Mr. McIntosh coming from the Eastern States to do our judging at the championships at the Royal Show.

"Another advance being made this year, is our intention to hold consolation trials on Thursday and Friday of the Royal Show week for the dogs that miss out in the championships."

OFFICERS ELECTED.

The election of office-bearers resulted as follows: President, Mr. F. P. Atwell; vice-presidents, Messrs. J. C. Bushell and B. Ball; treasurer, Sir Langlois Lefroy; committee, Messrs. F. V. Knapp, L. Ball, A. H. Glover, E. G. Riley, F. R. Rogers, D. S. Horwood, E. Jones, K. J. Martin, and J. R. Walsh; official organ, "The Western Mail"; auditors, O. L. Haines and Co.

The secretary suggested that the registration rules be altered to provide for non-members to make registrations on payment of double fees. For the guidance of the committee, when discussing these two items, the meeting agreed that entries should be accepted from non-members and that there should be no need to name puppies on transfers.

It was also decided that the 1953 trials be held at Wagin. A

motion that the trials be held at Northam was lost.

The general opinion of the meeting was that next year it should be a condition that all dogs to be eligible to compete must be registered with the association—those in the puppy class as litters and all others as adults.

Mr. Jones suggested that the association adopt Mr. Batson's idea of bringing sheep around the starting peg to the first obstacle instead of as at present and it was resolved that this suggestion be passed on to the incoming committee for consideration.

On behalf of Mr. Irving, who was unable to attend the meeting, Mr. Stevenson pointed out an anomaly which existed in the trial rules regarding the exact location of the rings at obstacles. After a discussion, it was resolved "that the rule covering this subject be recast by the committee." It was also suggested that in this rule might be included the measurements of the various obstacles.

A discussion took place as to the undesirability of having a new worker and dog open up the programme. It was resolved: "That it be a recommendation to the committee that the secretary be given discretionary power when drawing to put back into the draw, a worker who has never worked before."

A long discussion took place as to whether a farmers' class should be included in next year's trials or substituted by a novice class. Mr. Jones moved "that it be a recommendation to the committee that in next year's trials a farmers' class be substituted by a novice class for a dog and worker who has never won a first prize anywhere."

Mr. Jones said that he would donate five guineas for such a class, but after a long discussion and a suggestion made by Mr. W. E. Fowler, Mr. Jones withdrew his motion and said that he would give a special prize of five guineas for the best novice in the maiden trial, it being understood that a novice was a dog and worker which had never won a first prize.

SHEEPDOG TRIAL MOVES

THE five sheepdogs with the highest points in the open and maiden events at the elimination trials should be those eligible to compete in the State championship. This was a recommendation made to the committee at the recent general meeting of the W.A. Working Sheep Dog Association.

The reservation was made that, if this were done, the first and second prizewinners in the maiden events at the elimination events could make post entries in the open trial.

The other suggestions to the committee were:

- That a special field trial day be held at Claremont during the Royal visit and the Queen asked to give patronage.

- That the association favour the formation of a central organisation to coordinate all matters affecting sheepdog associations throughout Australia.

Favour
federal
body

- That the association favour the principle of the uniformity of courses and trial rules.

- That the association favour the method of deducting points in judging instead of the allocation of points, but that points should not be deducted for faults at obstacles but should be deducted under general work.

judging change
-deduct points

- That the establishment of Commonwealth championships under the control of a central organisation be recommended.

Australian
championship
favoured

- That a scoreboard be erected and some sheets provided at the field trials in the country so that public interest would be encouraged by keeping spectators informed of the points earned by the dogs as the trials progressed.

Western Mail September 1952

1952 Wagin

..... & Claremont

1952

Wagin Sheep Dog Trials

by MARTINGALE

BONNIE and Ben, two border collies owned by Mr. W. E. Fowler of Wongan Hills, almost "scooped the pool" at the W.A. Working Sheep Dog Association's annual field trials held at Wagin on August 26 and 27. In the open trial Bonnie gained first place for a pleasing performance that earned her 85 points. Her kennel-mate Ben won the maiden trial by a good margin of points and also won the second prize in the farmers' trial. As a result of the victories in the open and maiden events the Fowler "stable" now has two dogs eligible to compete in the State championship trials to be held at the 1952 Royal Show.

The meeting was held under ideal conditions in brilliant sunshine, and the sheep were the best I have ever seen fielded on a trial course. Mr. R. C. Riseborough had made 250 big-framed shorn wethers available free of charge for the trials, and topped this generous gesture by delivering them on the show-grounds. It is not the first time that Mr. Riseborough has helped in this manner. Inspired by the infectious enthusiasm of a local resident, Mr. Ben Ball, who is a vice-president and past president of the sheep dog association, many generous donations were made and the business houses of Wagin declared a half-holiday for the second day of the trials.

Wagin declares half holiday for trial

Main Event

KEENEST attention naturally centred on the open trial. The 23 entries fielded included the present State champion, Mr. E. G. Riley's Florrie who also has a 1946 championship to her credit, Mr. A. H. Glover's Rags, champion in 1948 and 1949, and other well-known trial performers such as Mrs. Riley's dog Riley, Mr. L. Ball's Snowy and Teddy Mr. F. B. Atwell's Flirt, Mr. H. C. Child's Lena, Mr. K. G. Martin's Jess and Mr. W. E. Fowler's Bonnie.

The co-judges, Messrs. J. R. Walsh and F. V. Knapp had a difficult task in most of the events, as there were no outstandingly good performances and few markedly inferior runs. In most cases, only a few points separated the prize winners.

Royal Show Trials

AT the 1952 Royal Show, Elliott Fowler's two dogs Bonnie and Ben; Frank Atwell's Tiny; Len Ball's Teddy and Ernie Riley's Highland Bob will compete for the State Sheep Dog Championship.

Western Mail Thursday 16 October 1952

Fernridge Teddy wins Blue Riband

RECORD-BREAKING crowds at the 1952 Perth Royal Show were treated to some delightful exhibitions of sheep dog trial work in the State Championship series. The Blue Riband was won by Mr. L. Ball's border collie, Fernridge Teddy, in his third bid for championship honours, and the general standard of work was higher than is generally seen at the "Royal" where the crowds, noise and unfamiliar surroundings usually impose a severe handicap.

1952 State Champion: Len Ball's Teddy



Mr. Len Ball and his State champion sheep dog, Fernridge Teddy.

Teddy's owner, Len Ball, is carrying on the traditions established years ago by his father, Ben Ball, and his uncle, the late Bill Ball. Both these names are well known to old-timers in the sheep dog trial game, as they bred, trained and worked a number of good dogs prior to the formation of the W.A. working Sheep Dog Association.

1952/53

Western Mail 16 October 1952

Perth Royal Show

Victorian Judge

MR. J. McINTOSH, of Nar-Nar-Goon, Victoria, was the judge for all sheep dog events at the Royal Show. Incidentally this versatile Victorian also judged the Aberdeen-Angus, Red Poll and Guernsey cattle and the Dorset Horn, Ryeland, Shropshire and Suffolk sheep.

Jim McIntosh is president of the Victorian Working Sheep Dog Association and has had considerable experience as a successful competitor in a number of important trials in his own State.

Most of the competitors found him less exacting than most of our West Australian judges, at least as far as "copybook performances" were concerned. This applied more particularly in the cast and approach where he allowed considerable latitude. On the other hand, he tended to be even stricter than the majority of judges when allotting points for general work.

When the sheep had been brought down to the starting peg he made each competitor walk in a circle and the dog had to bring the sheep round following the man before permission was given to proceed to the first obstacle.

At a meeting attended by a number of members of the association, Mr. McIntosh made a number of excellent suggestions concerning the conduct of future trials and received enthusiastic support in his aim to form a Federal body which would tend to promote greater uniformity in judging standards, and in the arrangement of the obstacles on the trial course.

K.J.Martin's Jess first WA dog to rep. WA at the nationals

Vic. judge is "different"

Western Mail Thursday 16 April 1953

SHEEPDOGS IN E.S.: *Western Australia is represented by four dogs at the National Sheepdog Championship Trials, which began in Canberra yesterday and will conclude on Saturday. Mr. E. G. Riley, of Gingin, has entered Florrie, Riley and Highland Bob. The fourth entry is the kelpie, Trelawney Jess, whose master is Mr. K. J. Martin, of Dalwallinu. Last year Trelawney Jess became the first dog to represent W.A. in the national trials. The West Australian dogs are expected to give a good account of themselves. Florrie has won two State championships, Riley has been a consistent winner at annual trials, and Highland Bob is a stylish worker regarded as a coming champion. While in the East last year, Trelawney Jess won a N.S.W. provincial trial. Taking dogs to the national trials is a costly business. Messrs. Riley and Martin deserve to be rewarded for their enthusiasm.*

Western Mail Thursday 14 May 1953

1953 NATIONAL TRIALS

W.A. SHEEPDOGS
ELIMINATED

SHEEPDOGS from Western Australia were unsuccessful at the Australian national sheepdog trials, which were held at Canberra recently. Kennie, an eight-year-old Border Collie owned by D. D. Smith of Roma, Queensland, won the national title with 188 points.

Competitors came from all States and some from New Zealand.

A record number of 148 entries was received and prize money reached the all-time high of £150, the largest sheepdog prize money in the world.

Riley suggests standard course - next page

Conditions were strange at Canberra

SHEEPDOG MAN SUGGESTS A STANDARD COURSE

SHEEPDOG courses and rules for trials should be standardised throughout Australia. This is the opinion of prominent sheepdog owner, Mr. E. G. Riley, of Gingin, who has just completed a 6,000-mile round trip to sheepdog trials in the Eastern States. He competed at Yass (N.S.W.) and in the national trials at Canberra.



HIGHLAND BOB

... performed well.

After travelling 3,000 miles with his three dogs Florrie, Riley and Highland Bob, he found that he was greatly handicapped by strange conditions.

The courses and rules at these two places were the same but differed markedly from those in Western Australia.

Mr. Riley said his dogs had performed well in the circumstances.

His dogs had been faced with three obstacles instead of four: the race, the bridge and the pen. There was no gate. The ramp was wider but was cleared across the wings.

The owner had to work his dogs from a ring only 3ft. in diameter and situated 10ft. from the obstacle. In Western Australia, the dogs could be worked from a much larger ring only about 6ft. from the obstacle.

Mr. Riley said that when the cast was made the sheep had to be brought over a line near the owner's flag before they were sent to the first obstacle.

On the way to the first obstacle they had to negotiate two flags near the centre of the course.

In the Eastern States, owners resorted much more to shouting and gesticulation than they did in W.A., he said. They continually harangued the dog on the way to the first obstacle.

If the sheep completed a circle—or more than one circle—around an obstacle, they were required to retrace their steps or "unwind."

During a run, the ring was completely empty except for the judge, who followed the dog. Another good idea was the bell that rang to start the cast.

Mr. Riley thought that the courses at Canberra and Yass were far better tests of the dog than West Australian courses.

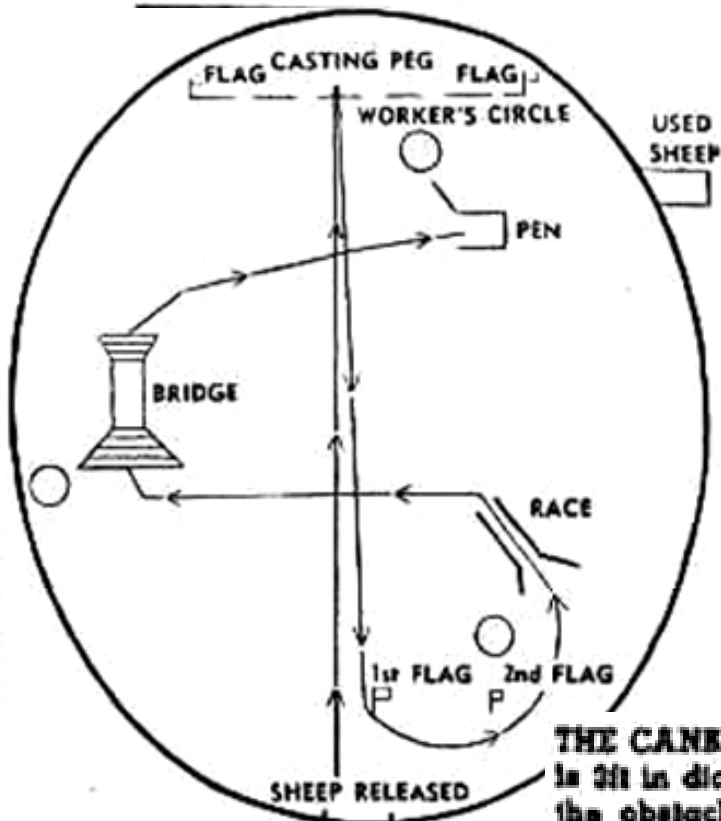
The judging at both trials was severe but excellent. Organisation had been perfect.

Mr. Riley thought that the Australian champion, Kennie, was a good dog. He felt gratified that Highland Bob had

finished in front of Kennie in the Yass trials, which preceded the national trials.

Highland Bob had also been second in a maiden trial at Yass.

The dogs had travelled well overland but Eastern States owners were amazed when Mr. Riley proceeded to work his dogs almost as soon as they had stepped off the utility. After a journey of only a few hundred miles Eastern States dogs were given several days rest.

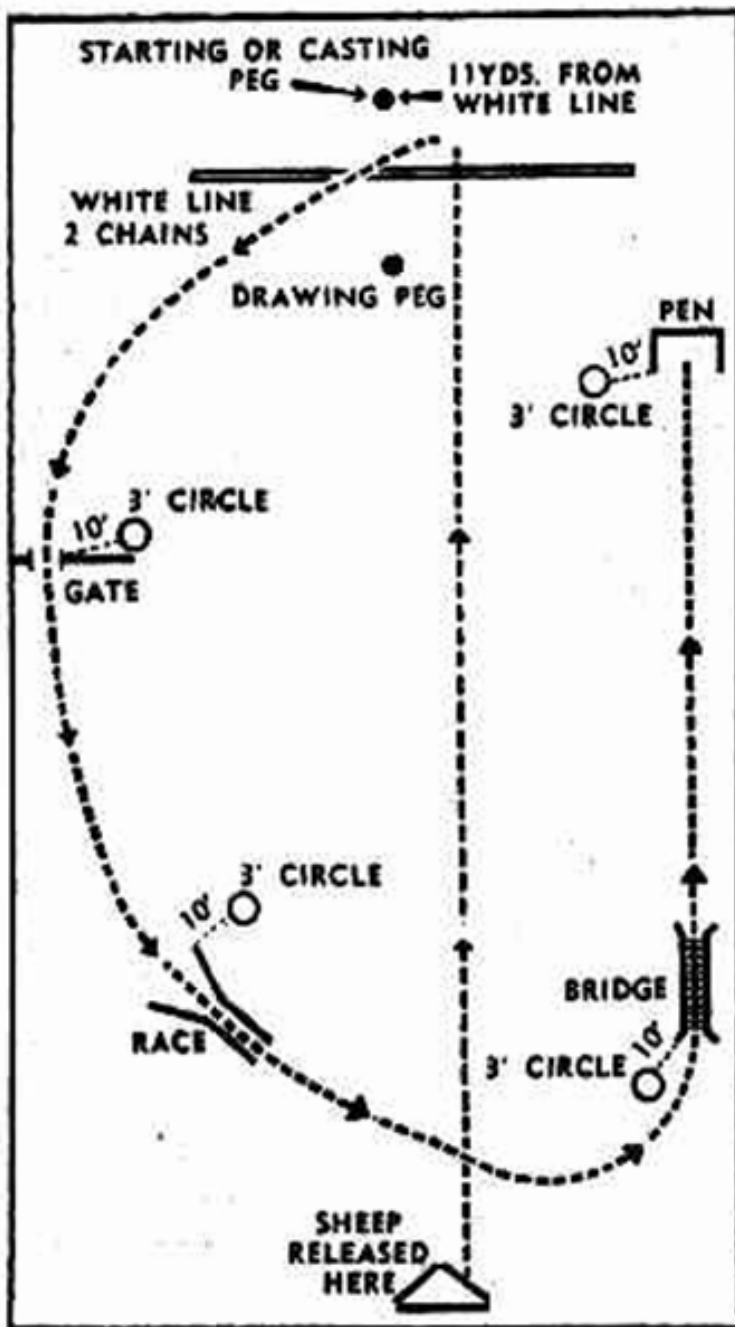


THE CANBERRA COURSE: The worker's circle at each obstacle is 3ft in diameter and 10ft. from each obstacle. Dimensions of the obstacles are: Race—length, 12ft.; width, 5ft.; wings, 4ft. 6in.; inlet, 8ft. Bridge—length, 10ft.; width, 3ft. 6in.; inlet, 15ft.; outlet, 5ft. slopes, 4ft. 6in. wings, 10ft. Pen—8ft. square.

Changes in sheepdog contests

*COURSE ANNOUNCED
FOR EVENT AT WAGIN*

Course
changes



CHANGES in the conduct of future sheepdog trial contests in this State have been agreed on by the committee of the West Australian Working Sheepdog Association.

The size of working-rings is to be reduced from 12ft. to 3ft. in diameter, while the distance from the edge of the ring to the end of the wing of the obstacle is to be increased from the former 6ft. to 10ft. The ring will be sited, as before, to the left of the obstacle facing the direction of the course of the sheep.

Also, provision has been made for a white line two chains long to be drawn cross-ways between the casting and drawing pegs, 11 yards from the former, and for the worker to stand at the casting peg until the sheep are brought to him over the white line. He can then move to the drawing peg.

These changes will bring the local rules of competition more into line with those of the national trials as conducted in the Eastern States.

Under previous arrangements West Australian competitors for national honours were somewhat handicapped on this score. Mr. E. G. Riley, of Gingen, who took three dogs to Canberra for this year's championships, felt considerably handicapped by conditions that were strange to him.

The new rules will apply at the association's annual field trials to be held on the Wagin showground on August 25 and 26. Competition will be con-

Western Mail Thursday 10 September 1953

1953

Working Sheep Dog Association's 11th annual field trial meeting on August 25 and 26. Wagin was the venue for this year's trials and 46 entries as against last year's 64 were received for the four events of the meeting—three in the puppy class, six in the farmers' trial, 15 in the maiden and 22 in the open events.

To bring the West Australian courses more in conformity with those used in the Eastern States trials, the size of the rings in which the workers stand at the obstacles had been reduced from 12ft. to 3ft. in diameter with the edges of the circles 10ft. instead of 6ft. from the obstacles.

This made the course more difficult, a fact that was most apparent in the open event

About 400 people watched the dogs compete.

1953
Wagin
&
Claremont

Western Mail | Thursday 10 September 1953

To contest championship

By their success at the annual field trials at Wagin recently the following sheepdogs have qualified for competition for the 1953 State championship to be conducted at the Royal Show:

Mr. A. H. Glover's Col-
lie (91 points), Mr. L.
Ball's Fernridge Moss
(89), Mr. H. C. Child's
Mintie (89), Mr. J. C.
Bushell's Trelawney Red
(87), and Mr. F. P. At-
well's Woodendale Tiny
(87).

Wester 17 September 1953

Sheepdog matters

UNTIL a substantial majority of States agree to the formation of an Australia-wide body the W.A. Working Sheep Dog Association will not affiliate with any other body or participate in a trial board.

This was decided by the association at its recent annual general meeting following a proposal by the Victorian Sheep Dog Association for the setting up of an Australia-wide trial board.

During discussion of the question it was noted that only three States, including W.A., had agreed to consider the proposal.

It was decided to hold next year's annual field trials in this State at Dalwallinu.

The rules were amended to provide for the registration of dogs by non-members at double fees and so that puppies need not be named on transfers.

Regarding the conduct of trials it was decided that, in the event of the time-bell ringing before the completion of work at any obstacle, points would be allotted at the judge's discretion.

The election of office-bearers resulted: Patron, Sir Langlois Leftoy; president, Mr. F. P. Atwell; treasurer, Mr. J. C. Bushell; committee, Messrs. F. V. Knapp, L. Ball, A. H. Glover, J. Rae, F. R. Rogers, D. S. Harwood, E. Jones, K. J. Martin and J. R. Walsh.

It was announced that the Busselton Agricultural Society was including a sheepdog trial in the programme for its show on November 13 and 14.

more
discussion
re federal
body

THE dogs that will be seen in action at the "Royal" are among the State's best performers. They have qualified by outstanding performances at the 1953 field trials conducted at Wagin in August last by the West Australian Working Sheep Dog Association.

Scoring

TO enable readers to appreciate the sheep dog trials, here is a brief precis of the scoring.

THE CAST (12 points). On entering the trial arena, the man takes up his position at the "casting peg" with the dog unleashed and behind him. Three sheep are released on the judge's signal and, on command, the dog moves out at a smart canter and describes a semi-circle which brings him to a point about ten or 15 yards in rear of the sheep and in line with them and his master. Here is should pause.

Points are lost by: Redirecting the dog in running; checking pace; not watching the sheep; stopping short of, or over-running the sheep; failing to stop "on balance." If the dog "crosses his cast" by running between the sheep and the man he is disqualified.

APPROACH (5 points): From his position at the finish of the cast, the dog moves in and "lifts" or assumes control of the sheep. The approach must be smooth, as sudden movements at this stage may panic the sheep. It should be forceful, as too hesitant an approach will allow the sheep to show fight, or resist the dog.

BRINGING (8 points): Having assumed control, the dog should bring the sheep in a straight line towards the man, preferably at a walk. The dog should be "on balance" ready to slip out to a flank to maintain direction. The movement is completed when the sheep are brought across a line 22 yards long running across the arena 11 yards in front of the casting peg.

OBSTACLES (25 points): When the sheep cross the line, the man moves to the first obstacle, usually moving round a "drawing peg" around which the dog must bring the sheep. At the obstacle the man must

CONTENDERS FOR THE SHEEPDOG'S BLUE RIBAND

by MARTINGALE

scoring
method

stand in a 3ft. diameter circle that is 10ft. from the obstacle and he may not leave this circle until the sheep are through.

The first obstacle, the gate, is a 3ft. gap between two hurdles placed at right angles to the line of travel.

The second, the race, has two parallel hurdles placed 3ft. apart, with two others forming a funnel-shaped entrance.

The third, the bridge or ramp, is similar to the race but here the sheep move up a cleated inclined ramp, across the level centre and down the reverse slope.

The final obstacle is the pen, three hurdles with a fourth forming a gate which must be closed when the sheep are inside. Each dog is allowed 15 minutes from the time he is cast to the time he pens his sheep, but no points are gained by penning in less than this time.

COMMAND (20 points): For obedience to the master's commands.

GENERAL WORK (30 points): This includes force, steadiness and control of sheep. Losing control and allowing the sheep to run round the obstacles, failure to move the sheep, slowness in checking a breakaway and similar faults all lead to loss of points.

The man too can lose points in this section by assisting the dog to put the sheep through the obstacles with sudden movements or shouting.

Failure to move in a straight line between obstacles without stopping to work the dog, also leads to deductions.

Severe

ALTOGETHER, the course is a very severe test of the ability of both the man and the dog. This year's course is more difficult than last year's as a few alterations have been made to bring our course more in conformity with those of the Eastern States.

Last year, the rings in which the man stands at the obstacles

were 12ft. in diameter with the edge only 6ft. from the obstacle. The man could move about fairly freely. Now with a 3ft. ring placed 10ft. from the obstacle, he must stand still and there is a wide gap for the sheep to dodge through.

At the pen, the man was required to keep one hand on the gate. Now he has to remain in his ring until the sheep are penned, and then step out to close the gate.

All the dogs which will compete at the 1953 Royal Show have put up good performances to complete the course at Wagin. On form, there is very little to choose between them and the competition should be particularly keen. However, there is nothing more unpredictable than a sheepdog trial.

The showground atmosphere is vastly different from the conditions under which they are normally called upon to work, for these are work-a-day animals that handle sheep on the farms except for a few brief trial appearances.

Sometimes their keenness on the task in hand permits them to work heedless of other distractions. At other times outside influences will excite them or make them so nervous that they cannot give of their best.

Sheepdog trainers are good sportsmen who, in the words of Kipling, have learnt to "meet with triumph and disaster and treat those two impostors just the same."

We can only wish them luck and hope that the best dog wins.

Western Mail | Thursday 22 October 1953

1953

SHEEPDOG BLUE RIBAND

Another championship to Fernridge Kennels

by MARTINGALE

TO the many Royal Show visitors who had hoped to witness some keenly-contested sheepdog events, the 1953 State Championship Trials were a dismal disappointment. Only one dog—the winner, Mr. L. Ball's Fernridge Moss—was able to reproduce the form shown in the qualifying trials at Wagin last August.

1953
Wagin
&
Claremont

Moss treated the Royal Show crowd to a very creditable display of sagacity and skill in her first run. She worked rather raggedly at the start but soon settled down and completed the course in good time for a score of 82 points.

However to keep faith with the public, who enjoy seeing the dogs at work, Moss was given an exhibition run on Wednesday afternoon and her consistently good work with three difficult sheep was one of the highlights of the show.

Fernridge Moss had caused a mild panic by "wagging it" from her home about a week before her Claremont debut. She was missing for three days but was eventually found assisting a man to drive and truck some cattle. According to her temporary owner, she was doing good work, in fact he said that she was the best cattle-dog he'd seen for years.

"QI"

1953 State Champion: Len Ball's Fernridge Moss

ROYAL SHOW

"COME BEHIND"

Both the man and his dog are on trial when sheep-dogs work at the Royal Show. From a 3ft. ring placed 10ft. from an obstacle into which the sheep must be driven, the master issues commands to his dog. You lose points if you redirect the dog in running. The trials call for patience and crisp words of command.



Mr. L. Ball, of Wagin, signals as he commands "Sit down!" and Fernridge Moss obeys.



"Get over!" commands Mr. F. H. Atwell, of Toodyay, when Woodendale Tiny moves towards the sheep.



Circle: "Sit down!" commands Mr. H. C. Childs, of Cranbrook, and Mintie drops to the ground.



"Steady!" and Collie slows down for Mr. A. H. Glover, of Mooliabeenie.



Arm outstretched, Mr. J. C. Bushell, of Northam, commands Trelawney Reo to "Go round!"

We know this to be Tom (Lance) Barnett...not J.C.Bushell - (he worked J.C.Bushell's entrants in trials)

1954

Western Mail Thursday 8 July 1954

SHEEPDOG TRIAL DATES FIXED

THE annual trials conducted by the West Australian Working Sheepdog Association will be held at Dalwallinu this year on August 24 and 25, and entries are to close on August 16.

This has been agreed on by the committee of the association.

It was decided to substitute for the puppy class a novice class for dogs or bitches which, regardless of age, have never competed at a trial conducted by the association, and that the other classes shall remain unchanged.

Judge for the Dalwallinu trials and for the State championships to be conducted at the Royal Show is committee member F. V. Knapp.

The annual general meeting of the association is to be held on the first night of the trials at Dalwallinu.

Course changes

THE following changes to the trial course have been agreed on by the committee: The attachment of circles to obstacles is not to apply to the pen, and the 2ft. rope at the head of the gate is to be

retained; the pen is to be 6ft. wide and 8ft. deep; the drawing pin is to be eliminated; the sheep are to be brought over the line between the flags.

Arrangements are in hand for a demonstration of sheepdog work at the Northampton agricultural show in September.

The Busselton Agricultural Society is again to conduct the South-West championships and is offering £30 prize money.

course changes

Results:

Novice dog or bitch which has never competed at trials conducted by the association: E. Jones's Woorolong Happy Jack, 1; M. Fowler's Glender Vale Moss, 2; E. P. Attwell's Woodendale Pat, 3.

Maiden dog or bitch: C. Child's Mintie.

Farmer's trial: W. E. Fowler's Glender Vale Ben, 1; E. G. Riley's Highland Bob, 2; E. P. Attwell's Woodendale Tiny, 3.

Open dog or bitch: A. H. Glover's Rags, and H. C. Child's Mintie, tie, 1; W. E. Fowler's Glender Vale Sally, and Hemp, tie, 2.

Western Mail 12 August 1954 ▶

Sheepdog trials for Dalwallinu

DALWALLINU: The eliminating trials of the W.A. Working Sheep Dog Association will be held here on August 24 and 25:

Entries will close on August 16.

The Dalwallinu and Districts Agricultural Society will erect a special fence for the occasion. Between 60 and 80 dogs will be competing and a large crowd is expected.

1954
Dalwallinu
&
Claremont

The West Australian 26 August 1954

Dogs Tie For First Place In Field Trials

DALWALLINU, Wed.—A. H. Glover's Rags and H. C. Child's Mintie tied for first place in the open classes of the field sheep-dog trials here yesterday and today.

They each gained 92 points.

The trials were conducted by the W.A. Working Sheep Dog Association.

E. Jones's Red Johnny was second with 88 points.

The trials were the first held in the north-eastern wheat belt.

The six dogs which will compete at the Royal Show are Rags, Mintie, Red Johnny, Donny, Glender Vale Sally and Hemp.

1954
Dalwallinu
&
Claremont

Western Mail 14 October 1954

1954

**BETTER LUCK
THIS TIME**

By his double success in the sheepdog championship trials at the Royal Show Mr. H. C. Childs, of Cranbrook, reaped the reward of good sportsmanship and perseverance. A consistent competitor in sheepdog trials for several years, he has been beset by misfortune on more than one occasion.

Two or three years ago he only smiled when the luck of the draw found him working his dog in semi-darkness. Said he, on that occasion: "Well, it had to happen to somebody."

Last year his entry for the championship finished up on three legs owing to a foot injury, and had to be withdrawn from the contest when performing competently.

Last week all went well with Mr. Childs's two border Collies, each winning its event with a very comfortable margin of points.

The dog Donny secured the championship with scores of 88 and 92 points respectively for his two runs, giving him a combined total of 180 points.

Next highest scorer was Mr. A. H. Glover's little black sheepdog Rags—a former State champion on two occasions—with 165 points.

The judge (Mr. F. V. Knapp, of Darkan)

Mr. H. C. Childs with State champion sheepdog Donny (left) and consolation trial winner Mintie, both of which he has bred and trained.



1954 State Champion: H.C. Child's Donny

Western Mail (9 September 1954

AT the recent annual general meeting of the West Australian Working Sheep Dog Association at Dalwallinu the following members expressed their willingness to participate in sheepdog trials planned by the Kalamundc Agricultural Society for its show on October 23

Messrs. E. G. Riley, E. Jones, F. Walker, W. E. Fowler, F. P. Atwell and N. Siggers.

It was decided to hold the association's 1955 field trials at Dalwallinu.

Election of officers resulted as follows: Patron, Sir Langlois Lefroy; president, Mr. F. V. Knapp; vice-presidents, Messrs. F. P. Atwell and M. Fowler; committee, Messrs. N. H. Murray, A. H. Glover, W. E. Fowler, K. J. Martin, J. R. Walsh, E. Jones, B. Ball, F. R. Rogers, J. Rae and A. Butler.

Five dogs for State championship.

MR. KNAPP expressed his intention of giving notice of motion for the next annual meeting that any trial conducted by an agricultural society under the association's rules and with an approved judge should be taken into consideration when selecting dogs to compete in the State championship.

He said his idea was that the first three placings in a trial conducted by an agricultural society, together with three from the association's field trial, should form the basis from which five dogs would be selected for the State championship.

plans for
Kalamundra
show

The West Australian | Saturday 17 September 1938

AGRICULTURAL SHOWS.

1938

Ballidu.

BALLIDU, Sept. 12.—The annual show of the Ballidu Agricultural Society was held on Saturday, September 10, in fine

play in the agricultural hall. The sheep dog trials, which were an innovation at this show, were a great source of interest, and the performance of the State champion, Jean, was admired by all.

SHEEP-DOG TRIALS.—Maiden event: E. Riley's Janny. Open event: E. Riley's Jean.

The Daily News | Saturday 21 October 1939

Katanning Show

On the Thursday keen interest will be shown in the sheep-dog trials, for which excellent entries have been received. These events

The West Australian | Monday 6 November 1939

KATANNING, Oct. 27.—The forty-ninth show of the Katanning Agricultural Society held today and yesterday reflected

tries. The sheep dog trials yesterday, for number of entries and competitions, were probably the best ever witnessed on the Great Southern.

Western Mail | 28 November 1940

1940

SHOW DAY AT BRUNSWICK

The sheepdog Jean who won the trials. She is owned by Mr. E. Riley of Gingin.

The Daily News (Perth, WA) | 21 October 1939

1939

Kojonup Show

Sheep-dog trials.

What should prove some of the most popular items on the programme are the sheep-dog trials. These are to be run at 11 a.m.

Handsome prizes are on offer in this section, and the contest promises to be particularly keen. Owners of the first and the second dogs in the contest will receive prize money.

A special cash prize will be given to the best maiden dog in the open event.

The Daily News | 14 October 1939

1939

PROUD display of what Tambellup is able to produce will be made on Saturday with the holding of the 28th annual show of the Tambellup Agricultural Society, Inc.

the ring events and the sheep dog trials promise to be highly entertaining.

Excellent entries have been received for the sheep dog trials and these contests promise to provide some of the most interesting displays on the programme.

This section of the programme will comprise open and maiden contests. Winner of the open event will be awarded the trophy donated by Mr. V. T. Sice.

The competing dogs will be required to drive a number of sheep over a special course. Providing as they do fascinating lessons in canine obedience and intelligence, these contests should be followed with particular interest by the large crowd expected at the show.

Included in the entry for this section are dogs owned by Mr. W. C. Ball, of Kojonup, and Mr. W. E. Fowler, also of that district. The entry is such as to indicate really excellent competition.

The West Australian | 25 August 1948 |

Sheep Dog Field Trials

1948

BEVERLEY, Aug. 24: Strong support on the part of the State's leading sheep-dog owners and good patronage on the part of the public spelt success for the Beverley Agricultural Society's inauguration of annual sheep-dog field trials at Beverley on Saturday. About 30 dogs representative of some of the best of their breed were seen in action and there were some fine individual displays, although generally speaking the judge (Mr. Bob Wall) was disappointed, particularly in the open class, in which most of the contestants were rung off for infringements of the regulations.

The most outstanding dog was Mr. E. Jones's Jimmy, which won the open class event, and also an inter-class contest arranged as an addition to the scheduled programme and in which the winning dog from each class competed. In this contest Mr. Jones's entry scored 95 out of the possible 100 points to win from Mr. Ben Ball's Darkey (91 points) and Mr. W. E. Fowler's Bonney (90 points).

THE WEST AUSTRALIAN, |

1951

OCTOBER 27, 1951.

Cooperation

MANJIMUP, Fri.—The committee of the Warren Agricultural Society has overcome an obstacle.

For an exhibition sheepdog trial to be conducted next month by Mr. Len Ball, of Wagin, 19 low hurdles were needed for obstacles.

All the society possessed were too high, so it was decided to get new ones, but even in a timber district purchase and delivery were uncertain.

So one committeeman gave a standing jarrah tree, another will cart and mill it, and another four tradesmen builders on the committee will ensure the construction of the hurdles.

"QI"

Albany Advertiser 14 November 1949,

ALBANY'S 1949 SHOW

Sheep Dog Trials Attract Wide Interest

1949

Record entries in almost every section gave the 1949 Albany Show an excellent start on Friday, and the attendance was much larger than it was on the first day last year. A big attraction this year was the sheep-dog trials, which were conducted on Friday afternoon.

SHEEP DOG TRIALS

Although there was disappointment that the Royal Show Champion, "Rags" did not come to Albany, keen interest was taken in the sheep dog trials conducted on Friday afternoon, a large crowd watching with close attention. There is little doubt that the trials were largely responsible for the fact that the attendance on the opening day was much larger than last year's. To many people watching sheep-dogs is a novelty, and they were amazed at the sagacity shown and the clear understanding between dog and master. Results:—

Maiden Trial	
Mr. H. Child's "Lena" ..	1
Open Trial	
Mr. Ball's "Snowy"	1
Mr. H. Child's "Mintie" ..	2

The West Australian 22 August 1950

SHEEP-DOG TRIALS

1950

Success of Quentin Boss At Beverley

BEVERLEY, Aug. 21: Ideal weather and an excellent entry of 39 dogs for the three classes were factors contributing to the success of the Beverley Agricultural Society's third annual sheep-dog field trials at the Beverley sports ground on Saturday.

The programme, which began about 9 a.m., was not completed till late in the afternoon, very keen competition being evident throughout the day. The farmers' trial had to be abandoned through lack of time.

Class 1 for maiden dog or bitch was won by Mr. W. E. Fowler's Judy (border collie). Judy secured only five points out of the possible 12 for the cast but from then on her general work was excellent. She finished with a total of 82 points to win from Mr. E. G. Riley's Bob (border collie) by one point. Mr. K. J. Martin's Jess (kelpie) with 80 points was third.

The open event for dog or bitch went to Mr. E. Jones's imported dog Quentin Boss (border collie) which put up a performance seldom equalled in trials in this State, only losing points between obstacles. He amassed the excellent total of 95 points out of a possible 100 to win from Mr. L. Ball's Teddy (border collie) which scored 88 points. Third place was filled by Mrs. E. G. Riley's Riley (border collie) with 87 points. Mr. Jones donated the trophy for the open event and after the success of his entry he returned the trophy to the society.

The general standard of work was higher than usual at the trials and the judge (Mr. J. Walsh, of Northam) was pleased with the showing and also with the society's arrangements for the fixture. Mr. Walsh was assisted by Mr. John Miller, of Beverley, as associate-judge and Mr. J. C. Bushell, of Northam, was the commentator.

Western Mail Thursday 26 November 1953

S.W. sheepdog contest won by Highland Riley

1953

by MARTINGALE

AT first sight, Busselton, down in the Deep South, seems an unlikely venue for a sheepdog championship trial. The Busseltonians are a cattle-conscious community, and one would imagine that their choice of canine contenders for a championship title would be something nippy in the heeler breed.

Busselton has an enterprising and energetic Agricultural Society however. When some of the livewire members saw how popular the sheepdog trials were as a Royal Show attraction they promptly decided to stage a South-West championship as a feature of their two-day annual show.

Having made the decision they lost no time in implementing it. They obtained all the necessary information about the trial course and Peter McMurchie got busy with the construction of a set of obstacles of the standard pattern—and a fine job he made of them.

John Rae was already a member of the committee of the W.A. Working Sheep Dog Association, and invitations were sent to a number of prominent sheepdog trainers, asking them to nominate their dogs for the trials on Friday, November 13.

The competing dogs were Highland Bob, Highland Riley and Highland Lassie entered by Mr. F. G. Riley of Gingin; Rags, Collie and Flicker entered by Mr. A. H. Glover of Mooliabeence; Trelawney Reo and Trelawney Mobil entered by Mr. L. Barnett of Bunbury; Red Johnny entered by Mr. E. Jones of Burges Siding and Trelawney Jess brought all the way from Dalwallinu by her owner, Mr. K. J. Martin.

The standard of work shown throughout the meeting was particularly high; in fact, I do not recall a more consistently pleasing exhibition. There were no "duds" and even the dogs which failed to achieve high scores did good work in the initial stages of their appearances.

The main event was a triumph for Ernie Riley's two border collies Riley and Bob, which scored 94 and 92 points respectively.



The judge, Mr. F. V. Knapp, placed Ted Jones's Red Johnny third with 88 points, and Jack Martin's Jess fourth with 73. Both these kelpies did good runs but dropped points on command and general work.